

The Company

- Mission Statement
- Ballet Master in Chief
- Dancers
- Orchestra
- Personnel
- Volunteers
- Repertory Index
- History
- The Viewing Room
- NYCB Lyre
- NYCB Alumni
- Annual Reports
- Job Postings

Home > The Company Mary Elizabeth Sell

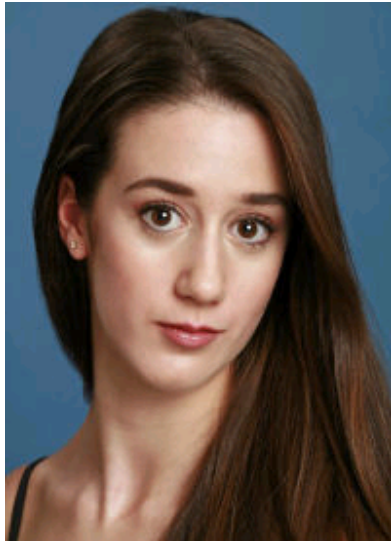


Photo © Paul Kolnik

Background Mary Elizabeth Sell was born in Norwalk, Connecticut, and began her dance training at the age of five. Ms. Sell entered the School of American Ballet (SAB), the official school of New York City Ballet, in the fall of 1996. While a student at SAB, Ms. Sell performed with the Company in *Coppelia*, *Scherzo alla Russe*, and *Double Feature*. Ms. Sell originated a corps role in Christopher d'Amoise's *Tribute*, as part of the SAB 2005 Annual Workshop.

In December 2005, Ms. Sell became an apprentice with NYCB, and in September 2006 she joined the Company as a member of the corps de ballet.

"WHAT ATTRACTS ME
VERY MUCH TO THE
COMPANY IS THAT
THERE ARE REALLY NO
SET RULES."

— Peter Martins