

Donate Now!

### Dancers

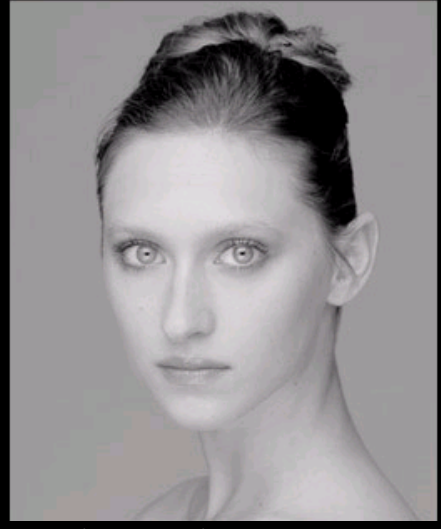
#### Sarah Van Patten

Born: Boston, Massachusetts  
Joined as a Soloist in 2002. Promoted to Principal Dancer in 2007.

Sarah Van Patten trained at Ballet Workshop of New England with Jacqueline Cronsberg, and danced with Massachusetts Youth Ballet and the Royal Danish Ballet before joining the San Francisco Ballet as a soloist in 2002. She was promoted to principal dancer in 2007 and has danced lead roles in a variety of ballets by Tomasson including Juliet in *Romeo & Juliet*; the Lilac Fairy in *The Sleeping Beauty*; the Sugar Plum Fairy, Snow Queen, and Grand Pas de Deux Ballerina in *Nutcracker*; and Mercedes and Driad Queen in Tomasson/Possokhov's *Don Quixote*. Van Patten has also performed principal roles in a number of Balanchine works, including *The Four Temperaments*, *Apollo*, *Who Cares?*, *Symphony in C*, *Serenade*, *Stravinsky Violin Concerto*, "Emeralds", "Diamonds", and *Divertimento No. 15*. She has created roles in Elo's *Double Evil*, Morris' *Joyride*, Tomasson's *The Fifth Season* and *Bagatelles*, and Wheeldon's *Within the Golden Hour*, among others. Her repertory also includes lead roles in de Mille's *Rodeo*; Mrozewski's *Concordia*; Possokhov's *Firebird*, *Reflections*, and *Fusion*; Robbins' *Dybbuk*, *Afternoon of a Faun*, *Fancy Free*, *In the Night*, and *The Concert*; Tomasson's *Nanna's Lied*, *Blue Rose*, and *Prism*; and Wheeldon's *Quaternary*, *Carousel (A Dance)*, and the pas de deux from *After the Rain*. Van Patten was awarded Denmark's New Talent Prize as an outstanding apprentice for the Royal Danish Ballet in 2001, and received the Chautauqua Festival Artistic Director's Award in 1997.

Watch a short [video of Sarah Van Patten](#)

[return](#)



Sarah Van Patten (© David Allen)



Sarah Van Patten in Tomasson's *The Sleeping Beauty* (© Erik Tomasson)