

[Home](#)[First Circular](#)[Second circular](#)[Organizing Committee](#)[Scientific Committee](#)[Conference themes](#)[Abstracts](#)[Presentations](#)[NEW!!! Submission of papers to proceedings](#)[Conference sessions and keynote speakers](#)[NEW!!! Program - Talks](#)[NEW!!! List of posters](#)[Registration and fees](#)[How to pay registration fees \(outside China\)](#)[How to pay registration fees in China](#)[Conference venue](#)[Accommodation](#)[Further information](#)[Contacts](#)[Sponsors and Partners](#)

Home



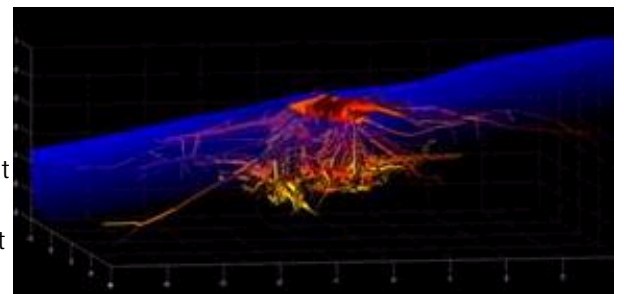
2nd International Conference on Ground Bio- and Eco-engineering. The Use of Vegetation to Improve Slope Stability Beijing, China, 14-18 July 2008



This conference is the second in the series "The Use of Vegetation to Improve Slope Stability". The first congress was held at Thessaloniki, Greece, from 13 – 17 September 2004. In an era where land use change and natural hazards are prevalent, soil erosion, landslides and other catastrophic events result not only in the loss of lives and infrastructure, but cause major damage to the environment. The aim of these meetings therefore is to bring together scientific researchers, practitioners, geotechnical and civil engineers, biologists, ecologists and foresters to discuss current problems in slope stability research, and how to address those problems using ground bio- and eco-engineering techniques. Ground

bioengineering methods integrate civil engineering techniques with natural materials to obtain fast, effective and economic methods of protecting, restoring and maintaining the environment whereas eco-engineering has been defined as a long-term ecological strategy to manage a site with regard to natural or man-made hazards. Conference sessions will focus on an area where such engineering techniques are used more and more frequently, i.e. natural and man-made slopes. Papers will be presented on slope instability, erosion, soil hydrology, mountain ecology, land use and restoration and how to mitigate these problems using vegetation.

The mechanics of root-soil interaction are of utmost importance, along with the modelling of root reinforcement and the development of decision support systems, areas where significant advances have been made in recent years. Newer areas of research include restoration ecology and cost-benefit analyses. Combined with presentations concerning traditional and novel engineering methods, this conference should appeal to researchers and decision-makers alike. Proceedings will be published in a special edition of the international journal 'Ecological Engineering.' We hope that you will be able to join us at this meeting, to be held in exciting Beijing, 2008's Olympic city



News

10/03/07

[ICGBE2 New Web Site](#)

A new web site has been created for the

ICGBE2 Workshop

[\[More\]](#)

[^ Top](#)

Next page: [First Circular](#)