

▶ 无车日活动 ▶ 会议信息
▶ 交通黄页 ▶ 人才招聘

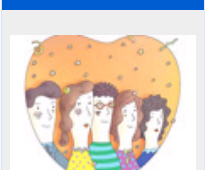
《城市交通》▶

搜索

编委团队



我们的团队



2009年第1期



城市轨道交通客流预测专题

2008年第6期



步行与自行车交通专题

过刊检索

2009	2008	2007
2006	2005	2004
2003	2002	2001
2000	1999	

内容

国铁在武汉轨道交通网络中的利用研究 点击数: 436

[点击查看PDF全文](#)

文章编号: 1672-5328 (2005) 04-0044-05

叶青 何继斌 黄明亮
(武汉市城市规划设计研究院, 武汉 430014)

【摘要】 建立以武汉为核心、辐射城市圈的多层次轨道交通网络, 是落实可持续发展观、实现区域交通一体化发展的迫切需要, 是加快武汉城市圈经济发展的基础和保障。着重研究以武汉为中心、一定区域内的、国家铁路现状条件及发展规划, 提出通过整合、开发和利用国铁系统, 开辟城际、市郊轨道交通线路, 协调与城区轨道交通的换乘关系, 从而形成武汉多层次轨道交通网络, 实现城市区域轨道交通的快速化、公交化、网络化和节能化, 促进交通的可持续发展。

【关键词】 国铁利用; 轨道交通; 武汉城市圈; 规划研究
【中图分类号】 U491
【文献标识码】 A

The Study on Constructing Multi-level Rail Transport Network by Using National Railway

YE Qing , HE Jibin , HUANG Mingliang
(Wuhan Academy Of Urban Planning & Design , Wuhan 430014 , China)

Abstract: Constructing multi-level rail transport network is impendency for Wuhan metropolitan area, which fulfilling sustained development idea and promoting the integrative development of the region transportation. Constructing multi-level rail transport network is the foundation and guarantee for speeding up the development of Wuhan metropolitan area. The author studies specially on the situation and plan of national railway in Wuhan metropolitan area, develops intercity railway and suburb railway by integrating and using national railway. The multi-level rail transport network includes national railway, intercity railway, suburb railway and urban railway, which will be interchanged at stations. The character of the network will be rapid, public, netty and saving energy, which promoting the sustainable development for transportation.

Keywords: use of national railway; rail transport network; Wuhan metropolitan area; plan & study