


Article outline is loading...


JavaScript required for article outline



Safety Science

Volume 50, Issue 6, July 2012, Pages 1408– 1414

Future challenges of accident investigation — Some insights from the 33rd ESReDA Seminar



Accident investigation in the Norwegian petroleum industry – Common features and future challenges

Eivind Okstad , Erik Jersin, Ranveig Kviseth Tinmannsvik
 SINTEF Technology and Society, Safety Research, N-7465 Trondheim, Norway
<http://dx.doi.org/10.1016/j.ssci.2010.12.012>, [How to Cite or Link Using DOI](#)

[View full text](#)

Purchase \$39.95

Abstract

In their regulations, the Petroleum Safety Authority Norway (PSA) states that the companies responsible for oil and gas exploration and production activities in Norway shall record and investigate accidents and serious incidents. This paper introduces a general model for the accident investigation process in the Norwegian petroleum industry, and presents some results derived from a comparative study of causal factors identified in offshore accident investigation reports from 2002 to 2006. The paper also offers a discussion of the improvement potential in the use of investigation methods. Finally, a discussion of future challenges in accident investigations is provided.

Research highlights

- ▶ Causal factors are identified from accident investigations in the Petroleum Industry.
- ▶ Deviations were connected to risk management, technical condition and management.
- ▶ Improvement potentials regarding the use of investigation methods were revealed.
- ▶ Challenges regarding further accident investigations are discussed.

Keywords

Accident investigation; Investigation methods; Safety management; Petroleum industry

Figures and tables from this article:

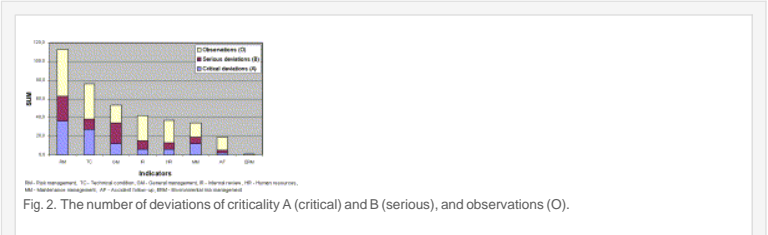
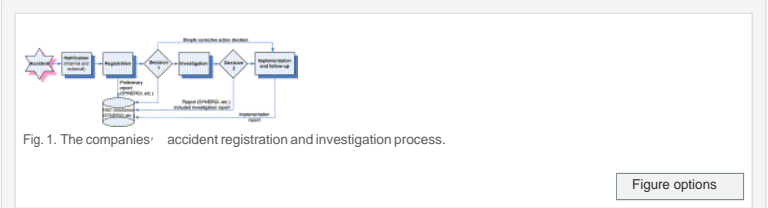


Figure options

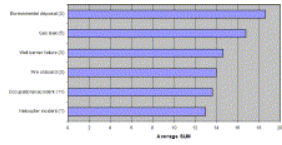


Fig. 3. The average number of deviations (A + B) and observations per accident type.

Figure options

Table 1. Categories of accidents.




[View Within Article](#)

Table 2. The HSE performance indicators ranged according to the number of critical and serious deviations.



[View Within Article](#)

 Corresponding author. Tel.: +47 73591505; fax: +47 73592896.
Copyright © 2011 Elsevier Ltd. All rights reserved.