

Understanding the global burden of disease

13 June 2012

University Of Queensland, Australia: Global Leadership Series

The world population increased by 30 per cent over the last quarter century to grow to more than seven billion in 2011.

With this level of growth comes an imperative to understand changing global health patterns to better plan for and manage future needs.

In 2007 Professor Alan Lopez of The University of Queensland and Professor Christopher Murray of The University of Washington, Seattle undertook a major study to research and compare worldwide disease and injury patterns and to identify the risk factors that cause them.

The Global Burden of Disease study is the largest ever review of historical and emerging trends in disease risk, development and spread; looking at the disease burden by death and disability for over 250 diseases and injuries across 190 countries.

The study was first undertaken two decades ago by Professors Lopez and Murray on behalf of the World Bank with a view to making health a global development priority.

" 20 years ago it was estimated that being underweight was the leading risk factor in global health, but we now see that high blood pressure is causing the most significant disease burden.

"That' s almost the opposite finding," Professor Lopez said.

" We think a study of this scope could be done every year.

"There' s been huge investment in data systems that allow us to track local trends."

"The world can' t wait for an update every five to 10 years; decision makers need this information in real time to enact real changes," Professor Murray said.

Professors Lopez and Murray will make a non-technical presentation of their preliminary results at a Global Leadership seminar, held in Washington D.C. this week.

The University of Queensland' s Global Leadership Series is a worldwide program of lectures and discussions with the best of the best UQ-related speakers on global matters that impact our communities and shape our ideas.

For more information and a schedule of upcoming events go to www.uq.edu.au/global-leadership-series

Date & Location

Date: Thursday 14 June 2012 Time: 6.30pm Registration

7pm-8pm Seminar

8pm-9pm Networking Reception Location: Embassy of Australia

1601 Massachusetts Avenue Northwest

Washington DC, USA Cost: Free

Biographies Professor Christopher Murray is a Professor of Global Health at The University of Washington and Director of the Institute for Health Metrics and Evaluation. A physician and Health Economist, his work has led to new methods and studies for population health management, public health performance, and cost effectiveness of health technologies.

Professor Murray has served with the World Health Organisation, and on several Harvard University health and population initiatives and institutes, and has edited numerous books and journal articles.

Professor Alan Lopez is a Professor of Global Health and Head of the School of Population Health at The University of Queensland and an Affiliate Professor at the Institute for Health Metrics and Evaluation at the University of Washington.

Professor Lopez spent 22 years with the World Health Organisation in a number of senior technical advisory and management roles and is a prolific and influential author and speaker in population health and medical research

For more information contact Khatmeh Osserian-Hannah, University of Queensland Washington Office on +1 202 340 6339 or Sarah McCormack, University of Queensland +61 7 3346 3921

Share link:

<http://tinyurl.com/kpz93tq>



Subscribe to the UQ News weekly newsletter

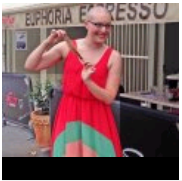
Subscribe



RECENT HEADLINES



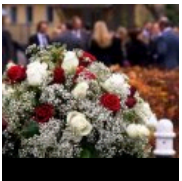
[Great expectations: our naive optimism about medical care](#) 23 December 2014



[Bald truth about auto-immune disease](#) 22 December 2014



[Monica's medical dream comes true](#) 20 December 2014



[Public mourning: a brief history](#) 19 December 2014

[More headlines](#)

[Great expectations: our naive optimism about medical care](#)
23 December 2014

[Public mourning: a brief history](#)
19 December 2014

[How to teach all students to think critically](#)
18 December 2014

[The Great Barrier Reef should not be listed as 'in danger'](#)
18 December 2014

[Seams, dreams: the hands behind classic Hollywood costumes](#)
15 December 2014

[Read more](#) UQ articles on The Conversation



Brisbane St Lucia, QLD 4072

+61 7 3365 1111

Other Campuses: [UQ Ipswich](#),
[UQ Gatton](#), [UQ Herston](#)

[Maps and Directions](#)

© 2014 The University of Queensland

A MEMBER OF



 GROUP OF EIGHT

[Privacy & Terms of use](#) | [Feedback](#)

Authorised by: Director, Office of Marketing
and Communications
ABN: 63 942 912 684
CRICOS Provider No: 00025B

QUICK LINKS

-  [For Media](#)
-  [Emergency Contact](#)

SOCIAL MEDIA


NEED HELP?

[UQ ANSWERS](#)

EMERGENCY

[3365 3333](#)

EXPLORE

-  [Giving to UQ](#)
-  [Faculties & Divisions](#)
-  [UQ Jobs](#)
-  [UQ Contacts](#)
-  [Services & Facilities](#)
-  [Login](#)