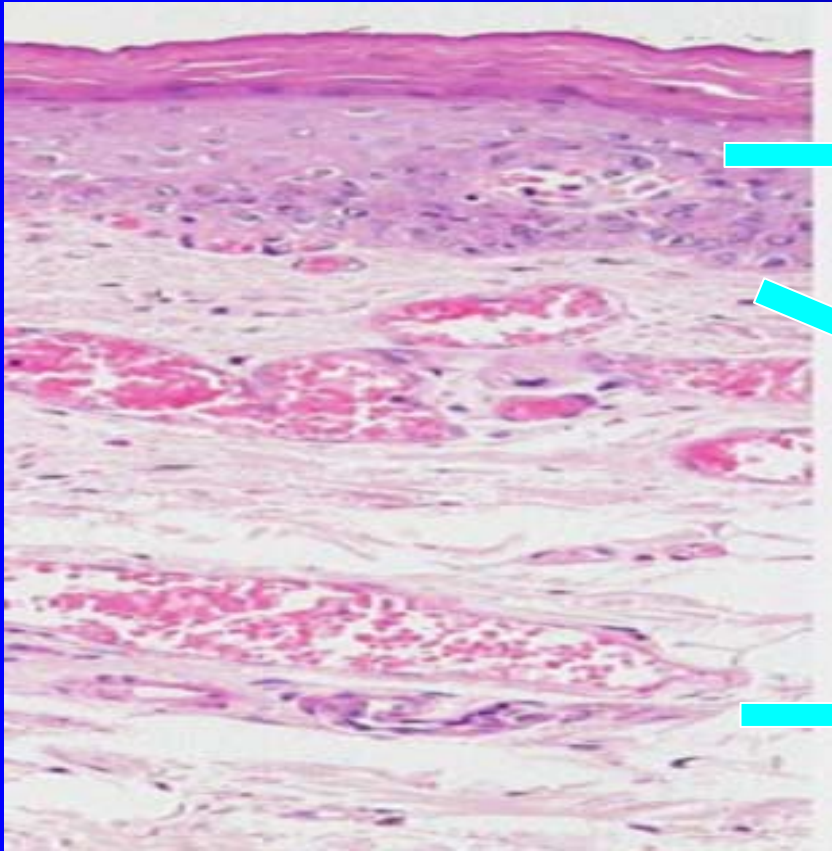




The Ulcerative Lesions of Oral Mucosa

**West China College of Stomatology
Zhou Hong Mei**

Definition of Ulceration ?



epithelium

basement membrane

submucosal tissue

Definition of Ulceration ?



Recurrent Aphthous Ulceration RAU

Recurrent Aphthous Stomatitis RAS

Mouth Ulcers Canker Sores

Epidemiology

- ❖ **The most** common ulcerative lesion of oral mucosa
- ❖ **The most** common disease of oral mucosa (20%)
- ◆ One of **the most** common oral diseases

Etiological Factors

immunology

genetic

mental stress

Digestion

incretin

vitamins

Trace
elements

infections

oxygen

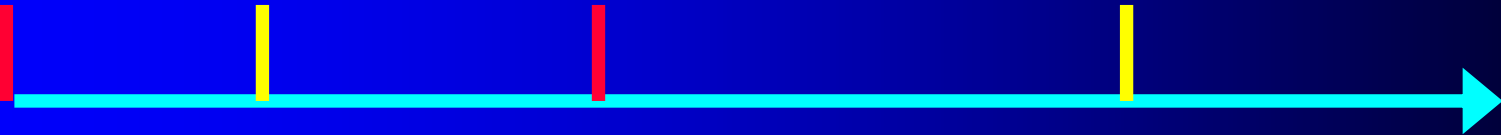
FRS

Others

Clinical Characteristics

- ❖ **Recurrent**
- ❖ **Self-confined**
- ❖ **Ulcerative**

Recurrent



1U

1R

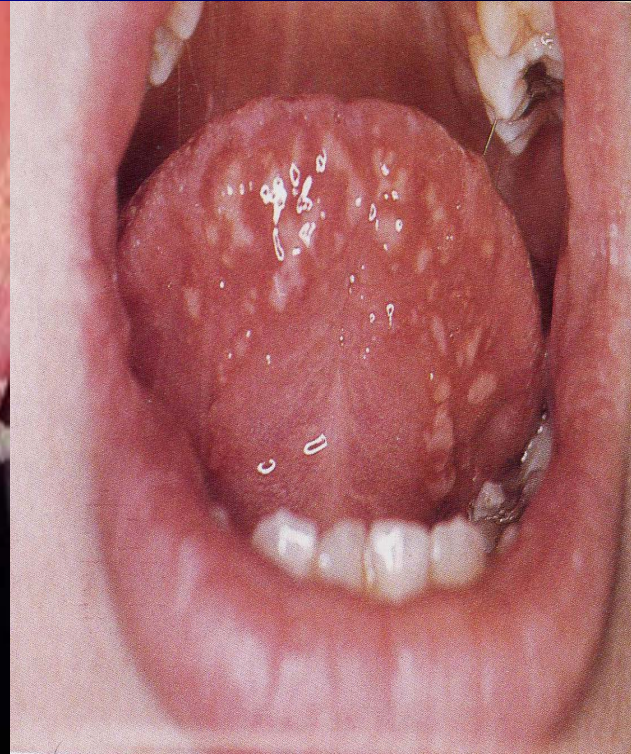
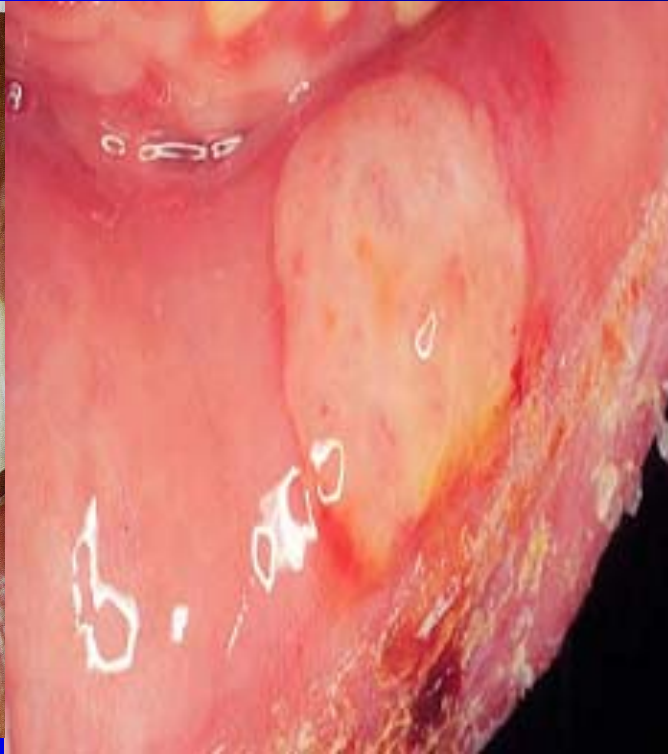
2U

2R

Self-confined

- **The extension is limited**
- **Can heal without drugs**
- **Its prognosis is good**

Ulcerative



Minor AU

Major AU

Herpetiform U

Round or oval ulcers

Diagnosis

- ❖ **The diagnosis of RAU is not difficult**
- ❖ **May be deduced from the history and the characteristic clinical appearance**

Treatment Principle

- To combine the systemic treatment with topical treatment
- To treat the patients psychologically
- To treat the systemic diseases

immunopotentiator

immunosuppressant

hormones

vitamin trace elements

Chinese medicine

topical agents

Prophylaxis



Will RAU ??



- Prognosis is good
- The rate of carcinogenesis is low
- Pay attention to the ulcers that not heal for a long time

Behcet's Syndrome, BS

Incidence

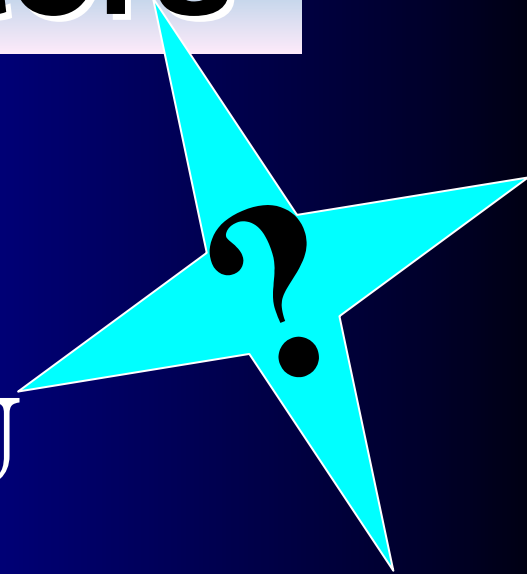
less than that of RAU

RAU 20% **BS** 0.01% (Japan)

Etiological Factors

The **same** as RAU

RAU oral **BS** multiple systems



Clinical Manifestations

Minor Symptoms

Oral Lesion

MiAU HU MjAU



Major Symptom—2

Genital Lesions

**recurrent
major ulcers**



Major Symptom—3

Eye Lesions

Japanese



Major Symptom—4

Skin Lesions

nodus erythema

acne

**Koebner's
phenomenon**

**skin pricked
reaction: +**



Koebner's phenomenon

a cutaneous response seen in certain dermatoses, eg. psoriasis and lichen planus, manifested by the appearance on uninvolved skin of lesions typical of the skin disease at the site of trauma, or scars, or at points where articles of clothing (eg. a belt) produce pressure.

isomorphic effect

Minor Symptoms

- ❖ Joints disease Chinese
- ❖ Vascular system diseases
- ❖ Digestion system diseases
- ❖ Pulmonary system diseases
- ❖ Nervous system diseases

Prognosis is bad

Diagnosis

BS international meeting in 1990

1. RAU +

2. Genital ulcers

3. Eye lesions

4. Skin lesions

5. skin pricked reaction: +

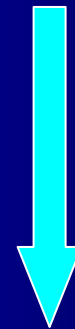
} **Any 2**

Treatment

- ❖ Principle : see RAU
- ❖ **colchicines** : first choice
- ❖ Others: see RAU

Conclusion

RAU **oral** **ulcerative lesions**



B S **multiple**
involvements

multiform lesions

Thank you

bye

