

Involvement of Ca^{2+} in Alleviation of Cd^{2+} Toxicity in Common Bean (*Phaseolus vulgaris* L.) Plants

Mona .A. Ismail

Botany Department, Faculty of Science, Suez Canal University, Ismailia, Egypt.

Abstract: In common bean plants, Cd caused significant growth retardation in stem length, stem fresh weight, stem dry weight and number of pods per plant by both concentrations (100 and 200 μM) of CdCl_2 ; while, the number of leaves and number of flowers per plant were reduced at high concentration of CdCl_2 . The root growth parameters were not significantly responding to Cd toxicity. The addition of CaCl_2 (100 μM) to Cd-stressed (100 μM CdCl_2) plants improved the stem fresh weight, root length, number of flowers and number of pods per plant. The contents of chlorophyll a, chlorophyll b and total chlorophyll were reduced with increasing concentrations of CdCl_2 ; while, carotenoids were higher in cd-treated plants. The addition of CaCl_2 increased the content of chlorophyll a and total chlorophyll, but not chlorophyll b. The total number of protein bands in SDS-PAGE protein profile was reduced in plants treated with CdCl_2 . However, addition of CaCl_2 (100 mM) did not correct the changes in the number of protein bands caused by cd stress. The synthesis of high molecular weight proteins (116 and 85.54 KDa) was completely inhibited by 200 μM CdCl_2 ; while, the synthesis of low molecular weight protein (26.11 KDa) was totally blocked by both CdCl_2 treatments. The addition of 100 mM CaCl_2 restored the synthesis of a 28.57 KDa protein. The synthesis of a molecular weight polypeptide of 101 KDa was induced by the high concentration of CdCl_2 . Progressive collapsing; disruption and browning of outer root tissues followed by cell death were noticed after CdCl_2 treatments. Addition of CaCl_2 relatively corrected the browning and collapsing of tissues caused by CdCl_2 .

Key words: Cd^{2+} toxicity, Ca^{2+} , common bean, SDS-PAGE proteins

INTRODUCTION

Cadmium ion (Cd^{2+}) a highly toxic element that is widespread in our environment essentially due to human activities such as industrial processes. It is a suspected carcinogen to humans and toxic to living cells even at very low concentrations^[18].

In plants, a low concentration (5.0 μg) of Cd reduced chlorophyll content and photochemical quantum yield of photosynthesis in *Brassica napus*^[11,2]. Cd also induced the generation of reactive oxygen species (ROS) caused various toxicities in the cells, resulting in inhibition of plant growth and severely suppresses root elongation^[19,1].

Studies on metal uptake pointed out that the plant transporter LCAI mediates the uptake of both Ca and Cd in yeast^[5]. Moreover, Cd competes with Ca at both Ca channels^[14] and intracellular Ca-binding proteins^[15]. Accordingly, the current investigation was conducted to verify the interacting effect of Ca^{2+} in alleviating the Phytotoxicity of Cd^{2+} in common bean plants with a special emphasis on the role of electrophoretic patterns of SDS-PAGE proteins.

MATERIALS AND METHODS

Plant Material: The experimental plant used in this investigation was pure strain of common bean (*Phaseolus vulgaris* L. cv. Nebraska). Seeds were kindly obtained from the Agricultural Research Center in Giza, Egypt.

Experimental Design: For plantation, 25 plastic pots (20 cm) were filled with homogenous pre-sieved garden soil (loamy sand). Surface sterilized common bean seeds were soaked in the pot soil 3.0 cm deep and all pots were watered up to saturation. Seedlings were thinned to three plants per pot, kept in the open garden and irrigated regularly to field capacity until treatments.

Treatments: After two weeks from soaking, the planted pots were randomly subdivided into five equal groups (5 pots each). One group was kept irrigated with pure water and sampled as control. Another two groups were treated with two concentrations (100 and 200 μM) of CdCl_2 . The last two groups were subjected to two combinations (100 μM + 100 mM; and 200 μM + 100 mM) of CdCl_2 + CaCl_2 , respectively.

Sampling and Measurements: After eight weeks from plantation, stem and root lengths, fresh and dry weights, leaf, flower and pod numbers were estimated and recorded.

Statistic: All parameters were statistically analyzed by multiple comparison procedure at $p \leq 0.05$ using t-test and mean separation by least significant difference (LSD)^[17].

Estimation of Photosynthetic Pigments: The contents ($\mu\text{g/g}$ dry weight of chlorophyll a, chlorophyll b, total chlorophyll and carotenoids) were estimated in the fresh leaves following the method of Lichtenthaler and Wellburn^[12].

Protein Electrophoresis:

Extraction of Total Protein: Total protein extracts were prepared by extracting appropriate weight from the frozen plant material with 0.125 M tris/ borate, pH 8.9. All the obtained extracts were kept at 4 °C for 24 h and centrifuged at 10000 rpm for 20 min. The supernatants were used for electrophoresis.

Gel Electrophoresis: SDS-PAGE was carried out with gel slabs according to the method of Laemmli^[10]. Protein subunit bands were stained with Coomassie blue R- 250 by standard techniques. The gel was scanned using Gel pro- Analyzer ver. 3.3 (Media Cybernetics 93-97).

Histological Examination: Eight-week-old common bean plant roots were used. Plants were cultivated under similar conditions of Cd toxicity and Ca effect assay. Root specimens were fixed in formalin: acetic acid: ethanol (FAE). Tissues were dehydrated in n-butyl alcohol, infiltrated and embedded in pure paraffin wax (m.p. = 56-58 °C) as described by Johansen^[8]. A rotary microtome was used to prepare serial sections (10 μ), which were then stained with safranin and light green or hematoxylin. Stained sections were examined and photographed with Zeiss Microscope.

RESULTS AND DISCUSSION

Growth Parameters: Cd Phytotoxicity caused noticeable growth retardation in most of the growth parameters of common bean (*Phaseolus vulgaris* L.) plants. These growth parameters were significantly reduced by both 100 and 200 μM CdCl₂ (Table 1). The stem length, stem fresh weight, stem dry weight and number of pods per plant were significantly reduced by both concentrations (100 and 200 μM) of CdCl₂; while, the number of leaves and number of flowers per plant were reduced only by the high concentration (200 μM)

of CdCl₂. The root growth parameters were not significantly responding to Cd toxicity. The addition of CaCl₂ (100 μM) to cd-stressed (100 μM CdCl₂) common bean plants improved the stem fresh weight, root length, number of flowers and number of pods per plant.

Photosynthetic Pigments: As shown in figure 2, the contents of chlorophyll a, chlorophyll b and total chlorophyll were reduced in foliage leaves of common bean plants in response to the applied concentrations (100 and 200 μM) of CdCl₂; while, carotenoids were higher in cd-treated plants. The addition of CaCl₂ increased the content of chlorophyll a and total chlorophyll, but not chlorophyll b.

Protein Electrophoresis Cd stress induced both qualitative and quantitative changes in SDS-PAGE protein profile of common bean plants (Figure 1 & Table 2). The total number of protein band was reduced from 27 in untreated (controlled) plants to 25 and 23 bands in plants treated with 100 and 200 μM CdCl₂, respectively. However, addition of CaCl₂ (100 mM) did not correct the changes in the number of protein bands caused by cd stress. The synthesis of high molecular weight proteins (116 and 85.54 KDa) was completely inhibited by 200 μM CdCl₂; while, the synthesis of low molecular weight protein (26.11 KDa) was totally blocked by both CdCl₂ treatments. The addition of 100 mM CaCl₂ restored the synthesis of a 28.57 KDa protein. The synthesis of a molecular weight polypeptide of 101 KDa was induced by the high concentration of CdCl₂.

Histological Staining: Thin sections from common bean root (Fig. 3) indicated progressive collapsing and disruption of the epidermal and cortical tissue layers of the root tissues and browning of tissues followed by root cell death caused by CdCl₂ treatments (Fig. 3, B and C) compared to the root of untreated plants (Fig. 3, A). The addition of CaCl₂ relatively prevented the brown coloration and collapsing of tissues caused by the low and high concentrations of CdCl₂ (Fig. 3, D and E).

In common bean plants, the results of this investigation reported on a variety of phytotoxic effects of Cd to plant growth, chlorophylls, protein synthesis and root tissue damages as well. Consistent findings reported that free Cd and other heavy metal ions often reduce cellular activities for a variety of reasons; for example, by generating oxidative stress and inhibition of enzyme reactions. Suzuki^[20] reported on plants incubated for two weeks in a sublethal level (200 μM) of Cd, root cells survived but with irregular thickening of cell walls and enlarged and unusually formed cells.

Table 1: Mean vegetative and reproductive growth parameters of common bean (*Phaseolus vulgaris* L. cv. Nebraska) plants treated with CdCl₂ (100 and 200 µM) and CdCl₂ + CaCl₂ (100 or 200 µM + 100 mM), respectively.

Treatment	Stem length (cm)	Stem fresh weight (g)	Stem dry weight (g)	Root length (cm)	Root fresh weight (g)	Root dry weight (g)	No. of leaves/Plant	No. of flowers/Plant	No. of pods/plant
C	73.00	21.80	6.70	11.00	09.20	01.30	14.00	11.66	09.30
T ₁	68.00	18.10	4.70	10.30	11.60	02.50	11.60	10.00	07.00
T ₂	67.00	15.20	3.81	10.00	07.16	01.60	08.30	07.30	07.30
T ₃	70.00	21.00	4.86	12.40	11.50	02.80	12.00	12.33	08.60
T ₄	68.00	16.33	4.00	14.50	08.16	01.53	10.30	09.30	08.00
LSD (P = 0.05)	2.432	2.268	1.622	2.011	2,136	1.232	2.193	2.093	1.435

C = controlled plants

T₁, T₂, = Plants treated with 100 and 200 UM CdCl₂, respectively

T₃ = Plants treated with 100 uM CdCl₂+100 mM CaCl₂

T₄ = Plants treated with 200 uM CdCl₂+100 mM CaCl₂

Table 2: Comparative analysis of relative concentration, molecular weight (M.Wt.) and rate of mobility (R_m) of SDS-PAE protein profile of common bean (*Phaseolus vulgaris* L. cv. Nebraska) plants treated with CdCl₂ and CdCl₂ + CaCl₂.

Band number	Treatment & Band %					R _m	Mol. Wt. (KDa)
	1	2	3	4	5		
1	0.71	0.42	--	0.55	--	0.07	116.00
2	--	--	0.16	--	--	0.10	101.01
3	0.32	0.21	--	0.26	--	0.18	85.54
4	1.21	2.37	0.95	1.88	1.77	0.22	79.28
5	0.07	0.76	0.46	0.57	0.44	0.25	76.81
6	0.04	--	0.42	0.19	--	0.27	72.33
7	1.03	2.06	0.81	1.77	2.34	0.33	66.22
8	0.30	1.21	0.97	0.58	0.80	0.36	48.15
9	0.48	0.24	--	0.22	0.46	0.40	36.75
10	0.82	0.86	0.45	0.63	0.97	0.43	35.39
11	1.53	2.52	1.02	1.37	2.70	0.47	33.06
12	0.29	0.38	0.44	--	0.57	0.50	31.68
13	0.20	0.36	0.33	0.22	0.10	0.52	30.97
14	0.42	0.59	0.39	0.33	0.21	0.54	30.04
15	0.21	--	--	0.30	0.14	0.58	28.57
16	1.19	1.89	0.65	1.19	1.95	0.61	27.20
17	0.28	--	--	--	--	0.64	26.11
18	2.89	4.09	1.04	2.33	3.29	0.67	24.65
19	15.2	14.0	29.0	21.4	21.0	0.71	23.21
20	17.8	32.4	21.2	20.8	28.9	0.76	21.68
21	8.4	5.61	7.59	6.37	5.81	0.79	20.68
22	3.05	4.31	3.29	3.63	2.24	0.82	19.70

Table 2: Continued

23	3.43	1.87	1.22	1.06	2.27	0.84	19.22
24	3.19	0.73	0.92	1.47	0.55	0.86	18.65
25	2.33	3.35	1.63	1.31	1.88	0.89	17.75
26	1.93	1.98	0.72	0.27	0.47	0.91	17.26
27	1.54	1.82	0.45	1.25	0.90	0.94	16.34
28	3.07	2.38	1.19	2.41	1.07	0.98	15.51
Bands/lane	27	25	23	25	23		

1 = untreated (control) plants

2 and 3 = plants treated with 100 and 200 μM CdCl_2

4 and 5 = plants treated with 100 μM CdCl_2 + 100 mM CaCl_2 and 200 μM CdCl_2 + 100 mM CaCl_2 ; respectively.

Table 3: Photosynthetic pigments ($\mu\text{g/ml}$) in foliage leaves of common bean (*Phaseolus vulgaris* L.) C untreated (Controlled) plant, T₁, T₂, = Plants treated with 100 and 200 μM CdCl_2 , respectively T₃ = Plants treated with 100 μM CdCl_2 +100 mM CaCl_2 plants; T₄ = Plants treated with 200 μM CdCl_2 +100 mM CaCl_2

Treatment	Chlorophyll ($\mu\text{g/g}$)			
	Chlorophyll(a)	Chlorophyll(b)	Carotenoids	Total chlorophyll
Control	28.82	18.96	0.87	47.77
T2	22.24	9.07	5.96	31.33
T3	15.48	6.96	3.36	22.44
T4	25.05	5.76	6.87	31.81
T5	18.42	6.43	4.33	24.85

C = untreated (control) plants

T1 and T 2 = plants treated with 100 and 200 μM CdCl_2 , respectively

T 3 = plants treated with 100 μM CdCl_2 + 100 mM CaCl_2

T4 = plants treated with 200 μM CdCl_2 +100 mM CaCl_2 ;

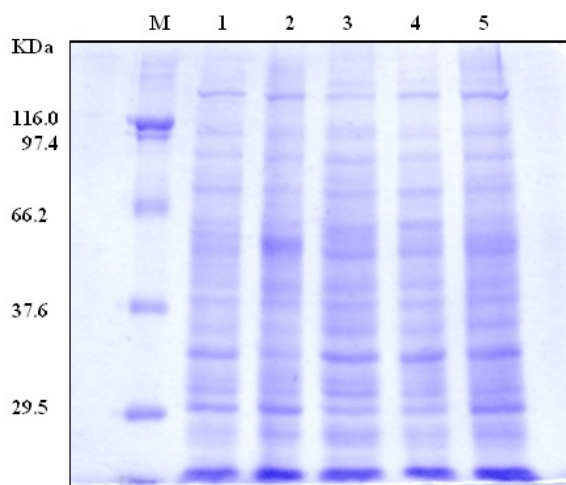


Fig. 1: Electrophotograph of SDS-PAGE of total proteins of common bean (*Phaseolus vulgaris* L. cv. Nebraska) plants. 1, untreated (controlled) plants (track1); 2 and 3, plants treated with 100 and 200 μM CdCl_2 ; 4 and 5, plants treated with 100 and 200 μM CdCl_2 + 100 Mm CaCl_2 ; M, molecular weight markers used on polyacrylamide gel.

Although it is not clear which mechanism caused those growth changes in root cells, Cd may have altered some metabolic pathways i.e. cell division block through the lack of Glutathione (GSH) integrity in

plant roots^[21], or Cd affected directly GSH metabolism^[23].

In this report, it was showed that Ca reduced the toxic effects of Cd in common bean plants. Relevant

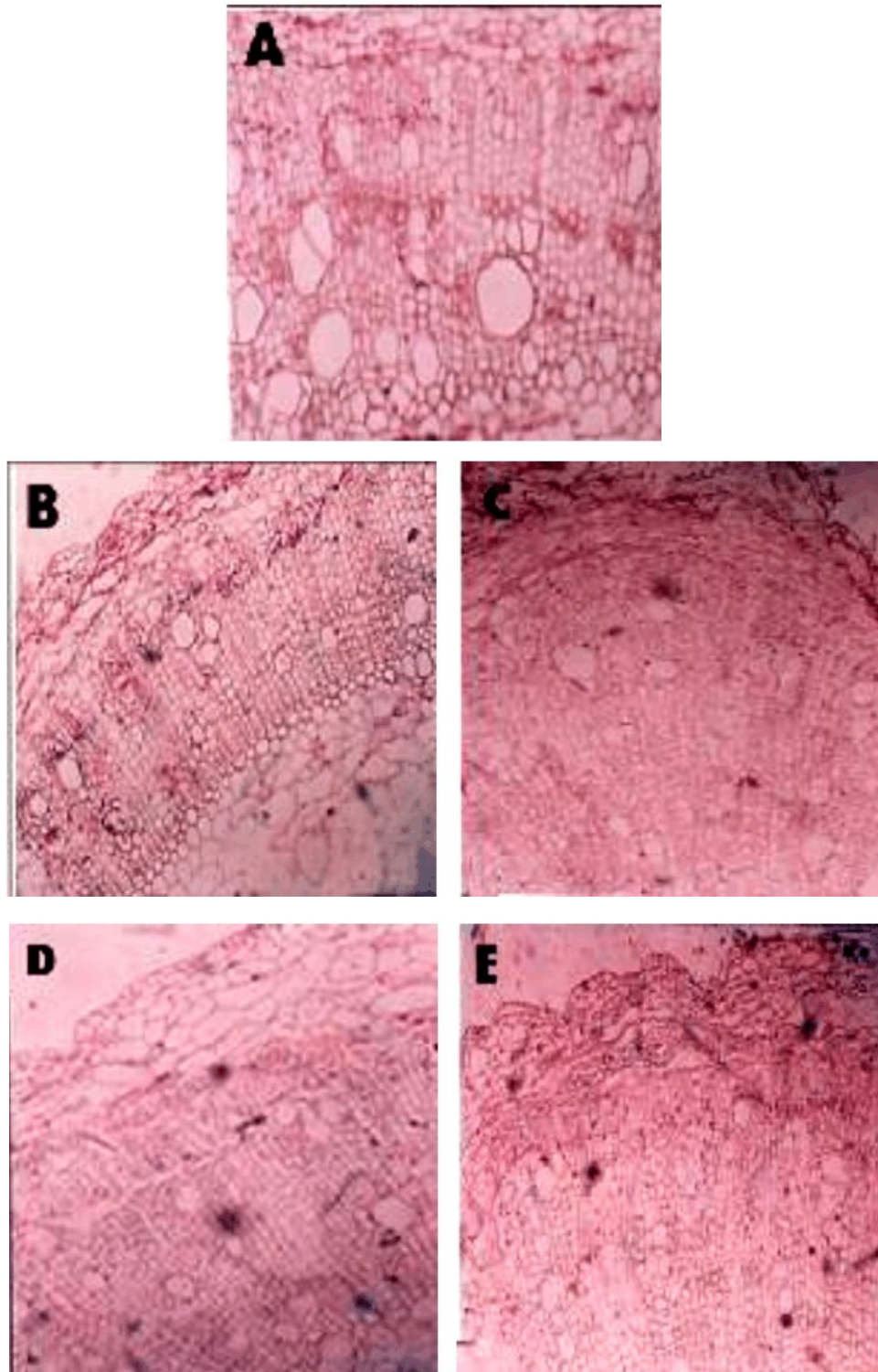


Fig. 3: Effect of CdCl₂ on the epidermal and cortical tissues of common bean (*Phaseolus vulgaris* L.) plant roots. A, untreated plants; B and C, plants treated with 100 and 200 μM CdCl₂, respectively; D, plants treated with 100 μM CdCl₂ + 100 mM CaCl₂; E, Plants treated with 200 μM CdCl₂ + 100 mM CaCl₂, respectively.

results reported that Ca reduced the uptake, accumulation and toxic effects of Cd in *Arabidopsis*^[20] and radish^[15]. Cd tolerance increased in tobacco in the presence of Ca, that probably due to the active exclusion of toxic Cd by the formation and excretion of Cd/Ca containing crystals through the head cells of trichomes^[4]. It was also previously reported that the accumulation of Cd on seed germination of radish is reduced by high concentration of Ca^[15].

Several mechanisms for Ca alleviation of mineral toxicity have been adopted. A proposed mechanism is the displacement of cell-surface toxic cations by Ca. Since plasma membrane surfaces are negatively charged, high level of Ca²⁺ would reduce cell-surface negativity and alleviate the harmfulness of cationic toxicants^[9]. The other proposed mechanism is the uptake of Cd through calcium channels blockers, diltiazem, verapamil, nifedipine and nitrendipine^[3]. It is evident that a large number of carrier proteins are involved in the transport of Cd^[13]. As a major defense mechanism, the inactivation of these metal ions could be accomplished by complexing them with phytochelatin such as metallothionin and cysteine-rich proteins^[6,16].

In conclusion, Ca ion could be applied in alleviating Cd Phytotoxicity in common bean plants in moderately Cd-contaminated soils. Such treatments would be worked out if the Cd concentration outside could be kept below a critical threshold level^[7]. Further investigations would focus on elucidating the precise role of Ca in decreased Cd influx into plants.

REFERENCES

1. Arduini, I., D.L. Godbold and A. Onnis, 1996. Cadmium and Copper uptake and distribution in Mediterranean tree seedling. *Physiol. Plant.*, 97: 111-117.
2. Baryla, A., P. Carrier, F. Frank, C. Coulmb, C. Sahut and M. Havaux, 2001. Leaf chlorosis in oilseed rape plants (*Brassica napus*) grown on cadmium-polluted soil: causes and consequences for photosynthesis and growth. *Planta.*, 212: 696-709.
3. Blazka, M.E. and Z.A. Shaikh, 1991. Differences in cadmium and mercury uptake by hepatocytes: role of calcium channels. *Toxicol. Appl. pharmacol.* 110: 55-363.
4. Choi, Y.E., E. Harada, M. Wada, H. Tsuboi, Y. Morita and H. Kusano, 2001. Detoxification of cadmium in tobacco plants: Formation and active excretion of crystals containing cadmium and calcium through trichomes. *Planta.*, 213: 45-50.
5. Clemens, S., D.M. Antosiewicz, J.M. Ward, D.P. Schachtman and J.I. Schroeder, 1998. The plant cDNA LCT1 mediates the uptake of calcium and cadmium in yeast. *Proc. Natl. Acad. Sci. USA*, 95: 12043-12048.
6. Di Toppi, L.S. and R. Gabbrielli, 1999. Responses to cadmium in higher plants. *Environ. Exp. Bot.*, 41: 105-130.
7. Haag-Kerwer, A., H.J. Schäfer, S. Heiss, C. Walter and T. Rausch, 1999. Cadmium exposure in *Brassica juncea* causes a decline in transpiration rate and leaf expansion without effect on photosynthesis. *J. Exp. Bot.*, 341: 1827-1835.
8. Johansen, D.A., 1940. *Plant Microtechnique*. MC Book Company, New York, USA.
9. Kinraide, T.B., 1998. Three mechanisms for the calcium alleviation of mineral toxicities. *Plant Physiol.* 118: 513-520.
10. Laemmli, U.K., 1970. Cleavage of structural proteins during the assembly of head of bacteriophage T₄. *Nature*. 227: 680-685.
11. Larsson, E., J. Borman and H. Asp, 1998. Influence of UV radiation and Cd²⁺ on chlorophyll fluorescence, growth and nutrient content in *Brassica napus*. *J. Exp. Bot.*, 49: 1031-1039.
12. Lichtenthaler, H.K. and R.R. Wellburn, 1983. Determination of total carotenoids and chlorophylls a and b of leaf extracts in different solvents. *Biochem. Soc. Transactions.*, 11: 591-592.
13. Maser, P., S. Thomine, J.I. Schroeder, J.M. Ward, K. Hirschi, H. Sze, I.N. Talke, A. Amtmann, J.F. Aathuis, D. Sanders, J.F. Harper, J. Tchieu, M. Gribskov, M.W. Persans, D.E. Salt, S.A. Kim and M.L. Guerinot, 2001. Phylogenetic relationships within cation transporter families of *Arabidopsis*. *Plant Physiol.*, 126: 1646-1667.
14. Nelson, M.T., 1986. Interactions of divalent cations with single calcium channels from rat brain synaptosomes. *J. Gen. Physiol.*, 87: 201-222.
15. Rivetta, A., N. Negrini, and M. Cocucci, 1997. Involvement of Cd²⁺ toxicity during the early phases of radish (*Raphanus sativus* L.) seed germination. *Plant Cell, Environ.*, 20: 600-608.
16. Song, W.Y., E. Martinoia, J. Lee, D.Y. Kim, E. Vogt, D. Shim, K.S. Choi, I. Hwang and Y. Lee, 2004. A novel family of cys-rich membrane proteins mediates cadmium resistance in *Arabidopsis*. *Plant Physiol.*, 135: 1027-1039.
17. Steel, R.G.D and J.H. Torrie, 1980. *Principle and procedures of statistics* 2nd ed. McGrath-Hill Inc., USA.
18. Stohs, S.J., D. Bagchi, E. Hassoun and M. Bagchi, 2000. Oxidative mechanisms in the toxicity of chromium and cadmium ions. *J. Environ. Pathol. Toxicol. Oncol.* 19: 201-213.
19. Stohs, S.J. and D. Bagchi, 1995. Oxidative mechanisms in the toxicity of metal ions. *Free Radic. Biol. Med.*, 18: 321-336.

20. Suzuki, N., 2005. Alleviation by calcium of cadmium-induced root growth inhibition in *Arabidopsis* seedlings. *Plant Biotechnology*. 22(1): 19-25.
21. Vernoux, T., R.C. Wilson, K.A. Seeley, J.P., Reichheld, S. Muroy, S. Brown, S.C. Maughan, C.S. Cobbett, M. Van Montagu, D. Inz, M.J. May, ZR. Sung , 2000. The ROOT MERISTEMLESS1/CADMIUM SENSITIVE2 gene defines a glutathione-dependent pathway involved in initiation and maintenance of cell division during postembryonic root development. *Plant Cell*. 12: 97-110.
22. Xiang, C. and D.J. Oliver, 1998. Glutathione metabolic genes coordinately respond to heavy metals and jasmonic acid in *Arabidopsis*. *Plant Cell.*, 10: 1539-1550.