

Flora of the Elmalı Cedar Research Forest (Antalya/Turkey)

İsmail Gökhan DENİZ, Hüseyin SÜMBÜL

Akdeniz University, Faculty of Science and Arts, Department of Biology, 07058 Antalya - TURKEY

Received: 08.09.2003

Accepted: 05.05.2004

Abstract: The flora of the Elmalı Cedar Research Forest (Antalya) was investigated. From the research area, 1296 samples were collected between September 2000 and September 2002. Of the 1296 samples, 83 represent families, 320 represent genera and 689 represent species that have been identified. The total number of species, subspecies and varieties of taxa was 708. In the analysed samples, 3 species were new to the scientific world. Twenty-eight of the taxa were collected for the first time from square C2. The number of endemic species in the research area is 141 (20.46%). Among the analysed species, 195 (28.30%) are Mediterranean elements, 87 (12.62%) are Irano-Turanian elements, 18 (2.61%) are Euro-Siberian elements, and 389 (56.45%) are multi-regional or species whose phytogeographical regions are unknown. In the investigated area, *Asteraceae* is the richest family, with 73 species and *Astragalus* L. is the richest genus, with 17 species.

Key Words: Cedar Research, Endemism, Elmalı, Flora, Vegetation.

Elmalı Sedir Araştırma Ormanı (Antalya/Türkiye) Florası

Özet: Bu çalışma, Elmalı Sedir Araştırma Ormanı (Antalya) florasını kapsamaktadır. Araştırma alanından Eylül 2000-Eylül 2002 tarihleri arasında 1296 bitki örneği toplanmıştır. 1296 bitki örneğinin değerlendirilmesi sonucu 83 familyaya ait 320 cins ve 689 tür tespit edilmiştir. Toplam takson sayısı ise 708'dir. Teşhis edilen örneklerden üç tanesi bilim dünyası için yenidir. Toplam taksondan 28 tanesi C2 karesinden ilk kez toplanmıştır. Alandaki endemik tür sayısı 141 (% 20.46)'dir. Toplam türlerin 195'i (% 28.30) Akdeniz elementi, 87'si (% 12.62) İnan-Turan elementi, 18'i (% 2.61) Avrupa-Sibirya elementi ve 389'u (% 56.45) çok bölgesel veya fitocoğrafik bölgesi bilinmeyen türlerdir. Araştırma alanında tür sayısı bakımından en büyük familya 73 türle *Asteraceae*, en büyük cins ise 17 türle *Astragalus* L.'dur.

Anahtar Sözcükler: Sedir Araştırma, Endemizm, Elmalı, Flora, Vejetasyon.

Introduction

The investigated area is located in the west of Antalya province and is mainly in the Mediterranean phytogeographical region. The Elmalı Cedar Research Forest (C.R.F.) was selected as a research area which is under-studied and has some interesting characteristics in terms of both flora and phytogeography. There had been no detailed study of the flora of this area before the research was undertaken. The first and only study of the research area was by Prof. Dr. Rıza Çetik, who collected 103 specimens between May and August in 1973-1975 (Çetik, 1977). This study, although commendable, has since been shown to be incomplete, but represents a challenge for further research. The Elmalı C.R.F. was chosen for the reasons given above and the aim of this

research is to make a contribution to the completion of the total flora of the entire Mediterranean region and the mountain systems of Beydağları.

The research area is bordered in the east by Ömerova hill, Çiğircik plateau, Gökyamaç hill and Kızlar Sivrisi, in the north by Kocaardıç hill, Elmalıalan hill, Kevenli hill, Yerkaklık hill and Kiraz hill, in the west by the Elmalı-Finike road, and in the south by Göltaarla village and Alişar hill (Figure 1). The research area lies approximately at latitude 36 °N and longitude 29 °E (Forestry Ministry, 1998). According to the grid system used in the Flora of Turkey, the area is in square C2. The altitude of the study area varies between 1050 m (Avlan lake) and 3070 m (Kızlar Sivrisi).

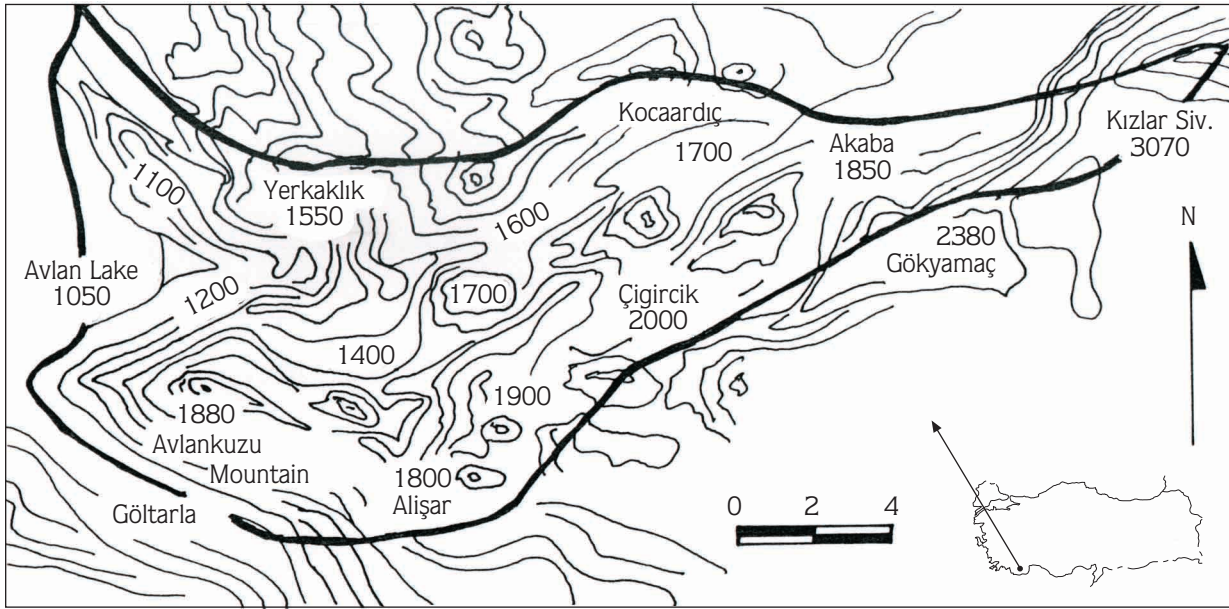


Figure 1. Geographic map of the research area.

The climate of the research area was examined using data from the meteorology station in Elmalı C.R.F. The climate in the area varies between the continental climate of Inner Anatolia and the Mediterranean climate. It is possible to see local climatic characteristics of both areas in the research area. The typical climate of the Mediterranean predominates, characterised by hot and dry summers and cold and rainy winters. The Mediterranean climate exists in Turkey on the narrow shorelines of the Mediterranean, Aegean, Marmara and Black Seas (Akman, 1990).

Figure 2 shows the average temperature and rainfall of the area. Meteorological data are only available from 1 station in the area and these were obtained between 1985 and 2000 in Çamkuyu (1660 m). The mean annual temperature is 7.5 °C and precipitation is 616.5 mm. It can be seen that heavy rainy in November, December, January and February, while the dry period extends from the beginning of May until the end of September.

The geological structure of the research area mostly consists of aged calcareous rocks which precipitate on the mesozoic old basic rocks (Karaman & Kibici, 1999). There are 3 large soil groups in the study area, red Mediterranean soil, brown forest soil, and high altitude

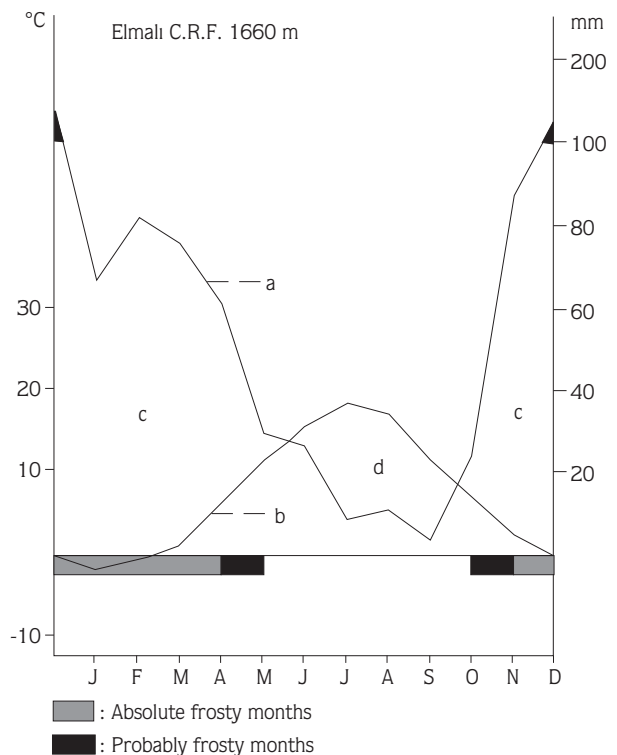


Figure 2. Climate diagram of Elmalı C.R.F.
a: Rain, b: Temperature, c: Rainy period, d: Dry period

mountain-meadow soil, due to the climate, topography and differences in the main substance.

Materials and Methods

This paper is part of master’s thesis by İ. Gökhan Deniz. The research material consists of some 1296 plant specimens collected from the research area. Efforts were made to collect both flowering and fruiting specimens. The specimens were prepared according to established herbarium techniques. The Flora of Turkey (Davis, 1965-1985; Davis et al., 1988; Güner et al., 2000) and other floras and references (Tutin, Heywood et al., 1964-1980; Meikle, 1977-1985; Porter, 1966; Sümbül & Erik, 1988b, 1988c, 1990a, 1990b; Blamey & Wilson, 1993), and revisions (Yaltırık, 1984; İlarıslan, 1996) were used in the identification of the specimens. Some specimens were determined by Gökürk, Düřen and Eren (Akdeniz Univ., Antalya). All of the plant specimens are kept at the herbarium of Akdeniz University (AKDU).

The plant taxa of the Elmalı Cedar Research Forest are listed in the appendix. Taxonomic categories in main groups such as families, genera and species are similarly arranged in evolutionary sequence. The list gives the localities of the taxa first (the research area is entirely located within “C2 Antalya; Elmalı Cedar Research Forest”), followed by habitats, altitudes, collection dates, collectors’ names, numbers, phytogeographical regions and endemisms. Cultivated plants are indicated in parentheses at the end of the locality and are considered in the endemism ratio. Author abbreviations follow Brummitt & Powell (1992). An asterisk in front of a plant name indicates a new record for the C2 grid square.

Abbreviations used in the text and appendix are as follows:

A.: Antalya	Eux.: Euxine
C.R.F.: Cedar Research Forest	Ir.-Tur. : Irano-Turanian
E.: East	Medit.: Mediterranean
End.: Endemic	N.: North
El.: Element	S.: South
Euro-Sib.: Euro-Siberian	W.: West

Discussion and Conclusion

This study was carried out with approximately 1296 plant specimens collected between September 2000 and September 2002. As a result of the identification of the plant specimens, 83 families, 320 genera, and 689 species were determined. The total number of taxa (species, subspecies and varieties) is 708. Twenty-eight species are new records for the C2 square (Donner, 1990; Yıldırımılı 1994, 1997, 1999): 141 species are endemic to Turkey. Two of the 689 species belong to the *Pteridophyta*, the other 687 belonging to the *Spermatophyta*. Nine species are *Gymnospermae* and the others (678) are *Angiospermae*. A further 585 species belong to *Magnoliopsida* and 93 species belong to *Liliopsida* (Table 1).

The species growing in the study area, ordered according to phytogeographic region, can be listed as follows: Mediterranean elements 195 (28.30%), Irano-Turanian elements 87 (12.62%), and Euro-Siberian elements 18 (2.61%): the remaining 389 (56.45%) species are multi-regional or of unknown phytogeographic origin (Table 2). The large number of

Table 1. The dispersion of taxa into large taxonomic groups.

	Number of Families	Number of Genera	Number of Species	Number of Endemic Taxa
<i>Liliopsida</i>	7	40	93	17
<i>Magnoliopsida</i>	71	273	585	124
<i>Angiospermae</i>	78	313	678	141
<i>Gymnospermae</i>	3	5	9	-
<i>Spermatophyta</i>	81	318	687	141
<i>Pteridophyta</i>	2	2	2	-
Total	83	320	689	141

Table 2. Distribution of species in research area within phytogeographic regions.

Phy-togeographic region	Number of species	Rates (%)
Mediterranean elements	195	28.30
Irano-Turanian elements	87	12.62
Euro-Siberian elements	18	2.61
Multi-regional or unknown	389	56.45

Mediterranean elements can be explained by the fact that the study area lies completely within the Mediterranean phytogeographic region (Sümbül & Erik, 1988a). For this reason, the number of Irano-Turanian and Euro-Siberian elements much smaller than the number of Mediterranean elements. The Euro-Siberian elements in the study area are located in marshy and humid habitats, which are the most suitable conditions for Euro-Siberian species. The Irano-Turanian elements identified in the study area are also species which are generally widespread in the Mediterranean phytogeographic region in dry habitats, which are suitable for Irano-Turanian species. The fact that Irano-Turanian and Euro-Siberian elements are found in the Mediterranean phytogeographic region can be explained by the fact that habitats suitable for the species of both phytogeographic regions have existed within the Mediterranean phytogeographic region since to the glacial and in terglacial ages (Göktürk & Sümbül, 1997). The proportion of species from more than one region or of uncertain phytogeographic origin is 56%. The main reason for this high proportion is the presence of high numbers of cultivated plants and wild plants sustained by cultivated plants in a small part of the study area around Göltarla village. The second reason for the high number of these species is the inadequate information available

concerning the distribution of some species, and thus their phytogeographic regions are generally not stated.

The results of studies conducted near our study area and in similar areas, together with the species distribution in the study area, are presented in Table 3 (Düşen & Sümbül, 2001; Peşmen, pers. com.; Sümbül & Erik, 1988b, 1988c, 1990a, 1990b; Peşmen & Güner, pers. com.). In all the studies carried out in the Mediterranean phytogeographic region, the number of Mediterranean elements is naturally higher than that of elements belonging to other regions. In the research carried out in the Olympos-Beydağları and Sarısu-Saklıkent the level of Mediterranean elements is high due to these being nearer than Elmalı C.R.F. to the Mediterranean Sea. Compared with the results of research in Taşeli Plateau, approximately the same rate (29%) of Mediterranean elements was collected. In a study on Dedegöl Mountain the rate of Mediterranean elements was lower. When the numbers of Irano-Turanian elements found in these 5 studies are compared, the results of the studies in Olympos-Beydağları and Sarısu-Saklıkent are similar to those in this paper. In the research conducted on Taşeli Plateau and on Dedegöl Mountain, the numbers of Irano-Turanian elements are higher than those in the other 3 since these areas are geographically close to the Irano-Turanian phytogeographic region. When the numbers of Euro-Siberian elements found in these studies are compared, the Euro-Siberian elements in Olympos-Beydağları constitute less than 1% due to the scarcity of marshy (wet) habitats in the area. Because these regions contain or are situated near to the Euro-Siberian enclaves, Euro-Siberian elements were found in these studies. The levels of multi-regional species and those of unknown phytogeographic origin are higher in all the

Table 3. Phytogeographic spread of species from compared studies.

	Studies performed				
	1	2	3	4	5
Number of species	689	702	865	1053	824
Phytogeographic region					
Mediterranean %	28.30	35.75	43	29	20.8
Irano-Turanian %	12.62	5.84	2.2	16.9	19.9
Euro-Siberian %	2.61	2.42	0.8	5.8	4.1
Multi-regional or unknown %	56.45	55.55	54.2	48.2	55.2

1. Flora of Elmalı C.R.F. 2. Flora of Sarısu-Saklıkent 3. Flora of Olympos-Beydağları 4. Flora of Taşeli Plateau 5. Flora of Dedegöl Mountain

studies. Since Turkey serves as a bridge between Southwest Asia and South-east Europe and little information about the distribution of some species is available the percentages of multi-regional species and those of unknown phytogeographic region are generally high. Moreover, if research is conducted close to an urban area or if it includes an urban area, these percentages will be even higher, as studies have shown.

In this study, 689 species from the research area were identified. The endemic taxa in the study area number 141 (20.46%), 125 of which belong to the *Magnoliopsida* and 16 of them belong to the *Liliopsida* (Table 1). Seventy-six of the endemic taxa belong to the Mediterranean phytogeographic region and 28 to the Irano-Turanian phytogeographic region. The pluri-regional endemics number 37. According to the Red Data Book of Turkish Plants (Ekim et al., 2000) 75 species are Lower Risk, least concern ie LR (lc), 19 species are Lower Risk, conservation dependent ie LR (cd), 23 species are Lower Risk, near threatened ie LR (nt), 15 species are Vulnerable ie VU and 9 species are Endangered ie EN.

As can be seen from Table 4, 215 (31.20%) of the species are therophyte, 210 (30.47%) are hemicryptohyte, 108 (15.67%) are chamaephyte, 80 (11.61%) are cryptophyte and 76 (11.03%) are phanerophyte. The level of "dry" or "semi-dry" species is relatively high. Although the average rainfall per year is 616.5 mm, most of the rain falls in November, December and January. The weather is dry from the beginning of May until the end of September. For this reason, it is

Table 4. Life-form.

Life-form	Number of species	Rates (%)
Phanerophyte	76	11.03
Chamaephyte	108	15.67
Cryptophyte	80	11.61
Hemi-cryptohyte	210	30.47
Therophyte	215	31.20

normal for the life-forms to be distributed as they are (Akman & Ketenoğlu, 1992).

The family *Asteraceae* is the largest in the study area with 73 (10.59%) species. The next largest is *Fabaceae*, represented by 68 (9.86%) species, *Brassicaceae* is next represented by 55 (7.98%) species, followed by *Caryophyllaceae* with 45 (6.53%) species, *Liliaceae* with 41 (5.95%) species, *Lamiaceae* with 40 (5.80%) species, *Poaceae* with 40 (5.80%) species, *Scrophulariaceae* with 30 (4.35%) species, *Rosaceae* with 27 (3.91%) species and *Boraginaceae* with 27 (3.91%) species. The *Asteraceae* are the largest family here, because they are the largest family in the world as well as in Turkey. The *Fabaceae* family are the second largest family in this area, partly because they are the second largest in Turkey and partly because of the large number of wild leguminous plants growing in cultivated areas.

The 10 largest families according to number of species in this study and the studies mentioned above are compared in Table 5.

Table 5. The richest families within the areas being compared.

	Studies performed				
	1	2	3	4	5
Number of species	689	702	865	1053	824
Families %					
<i>Asteraceae</i>	10.59	9.82	10.4	11.4	10.1
<i>Fabaceae</i>	9.86	10.54	9.2	9.9	9.2
<i>Brassicaceae</i>	7.98	5.41	4.9	7.2	6.1
<i>Caryophyllaceae</i>	6.53	4.41	6.4	5.4	7.0
<i>Liliaceae</i>	5.95	4.84	5.1	4.7	-
<i>Lamiaceae</i>	5.80	6.41	8.5	7.1	5.7
<i>Poaceae</i>	5.80	5.41	6.1	3.4	4.1
<i>Scrophulariaceae</i>	4.35	3.41	4.2	4.6	2.9
<i>Rosaceae</i>	3.91	-	-	-	3.5
<i>Boraginaceae</i>	3.91	2.99	2.9	3.7	2.4
<i>Apiaceae</i>	-	3.13	3.7	3.5	4.8

The order of the largest families varies only slightly between studies. In the studies of the Elmalı C.R.F., the *Apiaceae* family is not listed as one of the 10 largest families although is one the 10 largest in Turkey as a whole. In contrast, in the studies of the Elmalı C.R.F. and Dedegöl Mountain, the family *Rosaceae* is listed as one of the 10 largest families although is not one the 10 largest in Turkey as a whole. The *Rosaceae* family is 9th in the list from the Elmalı C.R.F. and 8th in the list from Dedegöl Mountain. Although this appears to be a significant divergence from the general distribution of Turkish flora, the family *Rosaceae* is, in fact, one of the 10 largest families in the Mediterranean phytogeographic region and in places close to transitional areas between the Mediterranean and Irano-Turanian phytogeographic regions. The family *Asteraceae* is the largest family in the studies carried out in Olympos-Beydağları, Dedegöl Mountain and on Taşeli Plateau, and is the 2nd largest family in Sarisu-Saklıkent. *Fabaceae*, the 3rd largest family in the world, was ranked second in Elmalı C.R.F., Olympos-Beydağları, Taşeli Plateau and Dedegöl

Mountain. Cultivated areas are widespread in the region, and some cultivated *Fabaceae* species are supported by cultivated plants, which explains the prominence of the family *Fabaceae*. Third position in the lists is occupied by one or other of the 6 largest families in Turkey. This result was expected. The family *Lamiaceae* can be seen in 3rd, 4th, 5th and 6th positions. This again was an expected result since this family is of Mediterranean origin.

The genera containing the highest number of species in this study and the other 4 studies are listed in Table 6. The 10 genera containing the highest number of species vary significantly. However, each list includes contains between 5 and 8 of the 10 genera containing the highest number of species. The genera *Alyssum* L., *Ornithogalum* L., *Salvia* L., *Ranunculus* L., *Veronica* L., *Medicago* L., *Hypericum* L., *Minuartia* L., *Dianthus* L. and *Trigonella* L., which are not among the 10 largest genera, are also included in the lists. The genus *Ornithogalum* L. occupies 9th position in Elmalı C.R.F., but it is not listed as one of the 10 largest genera in the studies compared. This discrepancy can be explained by differences in the habitats

Table 6. The richest genera in the studies compared.

Genus	Studies performed				
	1	2	3	4	5
<i>Astragalus</i>	17	10	-	35	19
<i>Silene</i>	17	12	15	19	19
<i>Centaurea</i>	13	6	9	13	8
<i>Euphorbia</i>	12	11	16	15	-
<i>Verbascum</i>	12	-	10	14	-
<i>Galium</i>	10	7	10	11	11
<i>Allium</i>	9	10	-	13	-
<i>Alyssum</i>	9	7	-	-	10
<i>Ornithogalum</i>	8	-	-	-	-
<i>Salvia</i>	7	7	11	-	8
<i>Trifolium</i>	-	10	12	-	-
<i>Ranunculus</i>	-	6	15	13	-
<i>Veronica</i>	-	-	10	15	8
<i>Medicago</i>	-	-	9	-	-
<i>Hypericum</i>	-	-	-	12	-
<i>Minuartia</i>	-	-	-	-	9
<i>Dianthus</i>	-	-	-	-	7
<i>Trigonella</i>	-	-	-	-	7

of the study areas. Similarly the genus *Euphorbia* L. is the 8th largest in Turkey, but ranks only 4th in the lists from Elmalı C.R.F., Sarısu-Saklıkent, Olympos-Beydagları and Taşeli Plateau because of the optimal habitats and presence of some cultivated areas containing *Euphorbia* L. species. The genus *Astragalus* L. contains the highest number of species in Turkey and features prominently in steppe regions close to the Mediterranean and Irano-Turanian phytogeographic regions, and so it is well represented in Elmalı C.R.F., Sarısu-Saklıkent, Taşeli Plateau and Dedegöl Mountain.

In the research area, 3 specimens thought to be new species have been determined. One of these specimens belongs to the genus *Ornithogalum* and is described as *Ornithogalum pamphylicum* O.D. Düşen & Sümbül in the Israel Journal of Botany (Düşen & Sümbül, 2002). The other specimens are in the process of publication and belong to the genera *Allium* and *Ornithogalum*.

References

- Akman Y (1990). *İklim ve Biyoiklim (Biyoiklim Metodları ve Türkiye İklimleri)*, pp 304-308. 291-296. Ankara: Palme Yayınları.
- Akman Y & Ketenözü O (1992). *Vejetasyon Ekolojisi ve Araştırma Metodları*. Ankara: A. Ü. Fen Fak. Yayınları.
- Blamey M & Grey-Wilson C (1993). *Mediterranean Wild Flowers*. London: Harper Collins Publishers.
- Brummitt RK & Powell CE (eds.) (1992). *Authors of Plant Names*. Kew: Royal Botanic Gardens.
- Çetik AR (1977). Elmalı-Çığılıkara ve Bucak Sedir Ormanları Florası. *Orman Araştırma Enstitüsü Dergisi* 23 (2): 3-102.
- Davis PH (ed.) (1965-1985). *Flora of Turkey and the East Aegean Islands*. Vols. 1-9. Edinburgh: Edinburgh Univ. Press.
- Davis PH, Tan K & Mill RR (eds.) (1988). *Flora of Turkey and the East Aegean Islands*. Vol. 10. Edinburgh: Edinburgh Univ. Press.
- Donner J (1990). Verbreitungskarten zu P.H. Davis "Flora of Turkey, 1-10". *Linzer Biol. Beitr* 22: 381-515.
- Düşen OD & Sümbül H (2001). Sarısu-Saklıkent (Antalya) Florası. *Ot Sistematik Botanik Dergisi* 8: 29-60.
- Düşen OD & Sümbül H (2002). *Ornithogalum pamphylicum*: New Species From South Anatolia. *Israel Journal of Plant Sciences* 50: 73-76.
- Ekim T, Koyuncu M, Vural M, Duman H, Aytaç Z & Adıgüzel N (2000). *Türkiye Bitkileri Kırmızı Kitabı*. Ankara: Türkiye Tabiatını Koruma Derneği-Van Yüzüncü Yıl Üniversitesi Yayınları.
- Forestry Ministry (1998). *Sedir Araştırma Ormanı Amenajman Planı*. Antalya: Orman Bakanlığı Yayınları.
- Göktürk RS & Sümbül H (1997). Flora of Antalya City. *Turk J Bot* 21: 341-378.
- Güner A, Özhatay N, Ekim T & Başer KHC (eds.) (2000). *Flora of Turkey and the East Aegean Islands*. Vol. 11. Edinburgh: Edinburgh Univ. Press.
- İlarslan R (1996). Türkiye'nin *Delphinium* L. (Ranunculaceae) Cinsinin Revizyonu. *Turk J Bot* 20: 133-159.
- Karaman ME & Kibici Y (1999). *Temel Jeoloji Prensipleri*. Ankara: Devran Matbaası.
- Meikle RD (1977-1985). *Flora of Cyprus*. Kew: The Bentham-Moxon Trust Royal Botanic Gardens.
- Porter CL (1966). *Taxonomy of Flowering Plants*. San Francisco: W.H. Freeman and Co.
- Sümbül H & Erik S (1988a). Taşeli Platosunda yetişen bazı bitkilerin fitocoğrafik yönden incelenmesi. *IX. Ulusal Biyoloji Kongresi Kitapçığı, Sivas* 3: 309-316.
- Sümbül H & Erik S (1988b). Taşeli Platosu I. *Turk J Bot* 12: 175-205.
- Sümbül H & Erik S (1988c). Taşeli Platosu II. *Turk J Bot* 12: 254-322.
- Sümbül H & Erik S (1990a). Taşeli Platosu III. *Hacettepe Üniv. Fen ve Mühendislik Bilimleri Dergisi* 11: 1-38.
- Sümbül H & Erik S (1990b). Taşeli Platosu IV. *Hacettepe Üniv. Fen ve Mühendislik Bilimleri Dergisi* 11: 61-120.

Tutin GT, Heywood VH, Burges NA, Valentine DH, Walters SM & Webb DA (eds.) (1964-1980). *Flora Europaea*. Vols. 1-5. Cambridge: Cambridge Univ. Press.

Yaltırık F (1984). *Türkiye'nin Meşelerinin Teşhis Klavuzu*. İstanbul: İ. Ü. Orman Fak. Yayınları.

Yıldırım Ş (1994). Türkiye'deki çeşitli kareler için yeni floristik kayıtlar. *Ot Sistematiği Botanik Dergisi* 1: 41-47.

Yıldırım Ş (1997). The chorology of the Turkish species of *Acanthaceae*, *Aceraceae*, *Aizoaceae*, *Amaranthaceae* and *Anacardiaceae* families. *Ot Sistematiği Botanik Dergisi* 4: 125-133.

Yıldırım Ş (1999). The chorology of the Turkish species of *Asteraceae* family. *Ot Sistematiği Botanik Dergisi* 6: 75-118.

APPENDIX

THE FLORISTIC LIST

PTERIDOPHYTA

EQUISETACEAE

Equisetum ramosissimum Desf.

N of entrance road, openings in macchie, 1100 m, 27.viii.2001, Deniz 1990.

ADIANTHACEAE

Adiantum capillus-veneris (L.) Medik.

N slope of Alişar hill, under forest, 1700 m, 22.v.2001, Deniz 1604.

SPERMATOPHYTA

GYMNASPERMAE

PINACEAE

Cedrus libani A.Rich. var. *libani*

Top of Avlankuzu mountain, *Cedrus libani* forest, 1880 m, 10.vi.2001, Deniz 2278. Medit. El.

Pinus nigra J.F.Arnold subsp. *nigra* var. *caramanica* (Loudon) Rehder

Çamkuyu, N of guest-house, *Cedrus libani* forest, 1660 m, 19.vi.2001, Deniz 1819.

P. brutia Ten. var. *brutia*

N side of Avlankuzu mountain, *Cedrus libani* forest, 1450 m, 10.vi.2002, Deniz 2143. E. Medit. El.

CUPRESSACEAE

Cupressus sempervirens L.

Göltarla village, gardens and fields, 1050 m, 15.iv.2002, Deniz 2142.

Juniperus oxycedrus L. subsp. *oxycedrus*

Around watchman's house, openings in macchie, 1400 m, 06.v.2001, Deniz 1304.

J. phoenicia L.

S of Çamkuyu, *Cedrus libani* forest, 1700 m, 28.ix.2001, Deniz 2045. Medit. El.

J. foetidissima Willd.

Şah Ardiç, *Cedrus libani* forest, 1600 m, 22.x.2001, Deniz 2064.

J. excelsa M.Bieb.

Around watchman's house, *Cedrus libani* forest, 1400 m, 06.v.2001, Deniz 1302.

EPHEDRACEAE

Ephedra major Host

Sarnıç field, roadsides, 1370 m, 28.viii.2001, Deniz 2020.

ANGIOSPERMAE

MAGNOLIOPSIDA

RANUNCULACEAE

Eranthis hyemalis (L.) Salisb.

Çiğircik plateau, steppe, 1950 m, 13.v.2002, Deniz 2185.

Nigella arvensis L. var. *glauca* Boiss.

Çamkuyu, meadows, 1660 m, 20.vi.2001, Deniz 1857.

Delphinium peregrinum L.

E of Sarnıç field, under forest, 1600 m, 18.vi.2001, Deniz 1786.

Consolida orientalis (Gay) Schröd.

Çamkuyu, meadows, 1660 m, 09.vi.2001, Deniz 1730.

C. regalis Gray. subsp. *paniculata* (Host) Soó var. *paniculata*

Sarnıç field, under forest, 1600 m, 18.vi.2001, Deniz 1786.

C. glandulosa (Boiss. & A.L.P.Huet) Bornm.

S of Çamkuyu, under forest, 1660 m, 15.viii.2001, Deniz 1004. End. Ir.-Tur. El.

C. raveyi (Boiss.) Schröd.

Sarnıç field, meadows, 1400 m, 20.vi.2001, Deniz 1874. End. Ir.-Tur. El.

Anemone blanda Schott & Kotschy

Çiğircik plateau, steppe, 1900 m, 13.v.2002, Deniz 2186.

Adonis aestivalis L. subsp. *aestivalis*

Gümüş Bucağı, openings in macchie, 1100 m, 26.iv.2001, Deniz 1171.

A. flammea Jacq.

Around entrance road, openings in macchie, 1250 m, 08.v.2001, Deniz 1446.

Ranunculus brevifolius Ten.

W side of Kızlar Sivrisi, steppe, 1850 m, 24.v.2001, Deniz 1710.

R. demissus DC. var. *major* Boiss.

Çiğircik plateau, under forest, 1850 m, 20.v.2001, Deniz 1521. End.

R. argyreus Boiss.

Kalaycı field, meadows, 1600 m, 26.iv.2001, Deniz 1195.

**R. cuneatus* Boiss.

Gümüş Bucağı, openings in macchie, 1100 m, 26.iv.2001, Deniz 1154.

R. cadmicus Boiss.

End of Kızlar Sivrisi road, under forest, 1750 m, 07.v.2001, Deniz 1366.

R. arvensis L.

Sarnıç field, openings in macchie, 1400 m, 05.v.2001, Deniz 1290.

R. ficaria L. subsp. *ficariiformis* Rouy & Foucaud

Çamkuyu, meadows, 1660 m, 13.v.2002, Deniz 2173.

R. sphaerospermus Boiss. & Blanche

Avlan lake, on water, 1050 m, 15.iv.2003, Deniz 2319.

Ceratocephalus falcatus (L.) Pers.

Old road of Avlan lake, meadows, 1100 m, 21.iii.2001, Deniz 1030.

NYMPHAEACEAE

Nymphaea alba L.

Avlan lake, on water, 1050 m, 15.vi.2002, Deniz 2279.

BERBERIDACEAE

Berberis crataegina DC.

Around entrance road, openings in macchie, 1100 m, 26.iv.2001, Deniz 1161. Ir.-Tur. El.

PAPAVERACEAE

Glaucium leiocarpum Boiss.

E of Sarnıç field, under forest, 1400 m, 15.viii.2001, Deniz 1005.

Papaver spicatum Boiss. & Bal. var. *spicatum*

Burçaklı field, rocky places, 1700 m, 09.vi.2001, Deniz 1744. End. E. Medit. El.

Akaba plateau, steppe, 1850 m, 24.v.2001, Deniz 1714. End. E. Medit. El.

P. apokrinomenon Fedde

Çamkuyu, meadows, 1670 m, 25.v.2001, Deniz 1720. End.

P. rhoeas L.

S of entrance road, openings in macchie, 1250 m, 06.v.2001, Deniz 1312.

P. dubium L.

Between Çamkuyu and Kızlar Sivrisi, under forest, 1750 m, 08.v.2001, Deniz 1421.

P. argemone L.

Kebap field, meadows, 1400 m, 21.v.2001, Deniz 1552.

Hypocoum imberbe Sibth. & Sm.

S of entrance road, meadows, 1100 m, 07.v.2001, Deniz 1353.

Corydalis solida (L.) Sw. subsp. *solida*

S of entrance road, openings in macchie, 1100 m, 21.ii.2001, Deniz 1016.

C. rutifolia (Sibth. & Sm.) DC. subsp. *erdellii* (Zucc.) Cullen & P.H.Davis

Çiğircik plateau, stony slopes, 1900 m, 13.v.2002, Deniz 2183.

Fumaria kralikii Jord.

N of Göltaarla village, openings in macchie, 1100 m, 08.iv.2001, Deniz 1096. Medit. El.

F. densiflora DC.

S of entrance road, openings in macchie, 1100 m, 15.iv.2002, Deniz 2101.

F. vaillantii Loisel.

Sarnıç field, openings in macchie, 1400 m, 07.v.2001, Deniz 1413.

F. asepala Boiss.

N of Göltaarla village, stony places, 1100 m, 08.iv.2001, Deniz 1098. Ir.-Tur. El.

BRASSICACEAE

Hirschfeldia incana (L.) Lagr.-Foss.

S of entrance road, meadows, 1100 m, 13.v.2002, Deniz 2237.

Rapistrum rugosum (L.) All.

Around Elmalı-Finike road, meadows, 1050 m, 13.v.2002, Deniz 2251.

Conringia orientalis (L.) Andrz.

Around Çamkuyu guest-house, under forest, 1670 m, 07.v.2001, Deniz 1393.

C. perfoliata (C.A.Mey.) Busch

Around watchman's house, stony slopes, 1350 m, 06.v.2001, Deniz 1296.

Cardaria draba (L.) Desv. subsp. *draba*

Sarnıç field, roadsides, 1450 m, 26.ix.2001, Deniz 1184.

C. draba (L.) Desv. subsp. *chalapensis* (L.) O.E.Schulz

Sarnıç field, roadsides, 1400 m, 21.v.2001, Deniz 1544.

Isatis cappadocica Desv. subsp. *alyssofolia* (Boiss.) P.H.Davis

Around watchman's house, under forest, 1350 m, 06.v.2001, Deniz 1358. End. Ir.-Tur. El.

I. glauca Aucher ex Boiss. subsp. *glauca*

Koç Sedir hill, under forest, 1850 m, 24.vii.2001, Deniz 1966. Ir.-Tur. El.

I. tinctoria L. subsp. *corymbosa* (Boiss.) P.H.Davis

Çiğircik plateau, under forest, 1850 m, 20.v.2001, Deniz 1533.

Iberis carica Bornm.

Kalaycı field, meadows, 1400 m, 21.v.2001, Deniz 1576. End. E. Medit. El.

Aethionema cordatum (Desf.) Boiss.

Around Çiğircik plateau, under forest, 1850 m, 20.v.2001, Deniz 1517. Ir.-Tur. El.

Ae. oppositifolium (Pers.) Hedge

W side of Kızlar Sivrisi, rocky places, 2250 m, 24.v.2001, Deniz 1709.

Thlaspi perfoliatum L.

S of entrance road, openings in macchie, 1150 m, 26.ix.2001, Deniz 1177.

Capsella bursa pastoris (L.) Medik.

S side of Avlankuzu mountain, under forest, 1150 m, 08.ix.2001, Deniz 1129.

Peltaria angustifolia DC.

Around entrance road, openings in macchie, 1150 m, 06.v.2001, Deniz 1328.

Fibigia eriocarpa (DC.) Boiss.

Sarnıç field, meadows, 1400 m, 05.v.2001, Deniz 1278.

Alyssum linifolium Steph. ex Willd. var. *linifolium*

Gümüş Bucağı, roadsides, 1100 m, 26.iv.2001, Deniz 1163.

A. desertorum Stapf var. *prostratum* Dudley

S side of Avlankuzu mountain, under forest, 1400 m, 8.iv.2001, Deniz 1150.

A. szowitzianum Fisch. & C.A.Mey.

Sarnıç field, stony slopes, 1400 m, 07.v.2001, Deniz 1411.

A. macropodium Boiss. & Bal. var. *macropodium*

Around watchman's house, roadsides, 1350 m, 06.v.2001, Deniz 1300. End. Ir.-Tur. El.

A. minus (L.) Rothm. var. *minus*

Old road of Avlan lake, meadows, 1150 m, 15.iv.2002, Deniz 2120.

A. hirsutum M.Bieb.

E of Sarnıç field, stony places, 1400 m, 05.v.2001, Deniz 1280.

A. argyrophyllum Schott

Çamkuyu, meadows, 1670 m, 19.vi.2001, Deniz 1805. End.

A. aurantiacum Boiss.

Between Kebap and Tavşan fields, under forest, 1400 m, 23.v.2001, Deniz 1637. End. E. Medit. El.

A. murale Waldst. & Kit. var. *murale*

Kalaycı field, under forest, 1600 m, 11.vii.2001, Deniz 1930.

Clypeola jonthlaspi L.

Gümüş Bucağı, openings in macchie, 1100 m, 26.iv.2001, Deniz 1162.

C. ciliata Boiss.

Around Çamkuyu-Kızlar Sivrisi road, under forest, 1750 m, 07.v.2001, Deniz 1396. End.

Draba bruniifolia Stev. subsp. *heterocoma* (Fenzl) Coode & Cullen var. *nana* (Stapf) O.E.Schulz

Akaba plateau, steppe, 1850 m, 07.v.2001, Deniz 1367. End.

D. huetii Boiss.

W side of Kızlar Sivrisi, steppe, 2500 m, 09.vi.2001, Deniz 1762.

Erophila verna (L.) Chevall. subsp. *verna*

Old road of Avlan lake, openings in macchie, 1050 m, 15.iv.2002, Deniz 2118.

Arabis deflexa Boiss.

N slope of Alişar hill, under forest, 1800 m, 22.v.2001, Deniz 1603. E. Medit. El.

A. ionocalyx Boiss.

Around entrance road, rocky places, 1150 m, 03.iii.2001, Deniz 1020. E. Medit. El.

A. caucasica Willd. subsp. *brevifolia* (DC.) Cullen

E of Sarnıç field, stony places, 1400 m, 21.iii.2001, Deniz 1033. E. Medit. El.

A. nova Vill.

W of Aliç field, under forest, 1500 m, 24.v.2001, Deniz 1691.

A. verna (L.) DC.

Around entrance road, stony places, 1100 m, 08.iv.2001, Deniz 1099. Medit. El.

A. aucheri Boiss.

W of Sarnıç field, rocky places, 1400 m, 05.v.2001, Deniz 1292.

Rorippa sylvestre (L.) Besser

N side of Avlankuzu mountain, under forest, 1200 m, 08.iv.2001, Deniz 1139.

R. aurea (Boiss. & Heldr.) Hub.-Mor.

Sarnıç field, meadows, 1400 m, 05.v.2001, Deniz 1443. End.

Cardamine hirsuta L.

Around entrance road, openings in macchie, 1150 m, 08.iv.2001, Deniz 1017.

Aubrieta deltoidea (L.) DC.

S of crossroad on the Kızlar Sivrisi road, rocky places, 1750 m, 26.iv.2001, Deniz 1213.

A. canescens (Boiss.) Bornm. subsp. *canescens*

Gümüş Bucağı, rocky places, 1100 m, 21.iii.2001, Deniz 1023. End.

***Chorispora syriaca** Boiss.

Around entrance road, openings in macchie, 1150 m, 15.iv.2002, Deniz 2141. Ir.-Tur. El.

Hesperis pisidica Hub.-Mor.

Çiğircik plateau, stony places, 1850 m, 20.v.2001, Deniz 1519. End.

H. pendula DC.

Around entrance road, stony places, 1150 m, 26.iv.2001, Deniz 1185.

Erysimum gonocaulon Boiss.

N of Çamkuyu, under forest, 1800 m, 25.v.2001, Deniz 1721.

E. pallidum Boiss.

W of Kalaycı field, stony places, 1750 m, 20.v.2001, Deniz 1528. End.

E. kotschyianum Gay

Akaba plateau, rocky places, 1750 m, 07.v.2001, Deniz 1371. End.

E. crassipes Fisch. & C.A.Mey.

Çam kuyuları, Sarnıç field, NW side of Avlan lake-Gümüş Bucağı, Q. Coccifera-J. oxycedrus. Ca: 1400 m. 3.vii.1974. R. ÇETİK.

E. smyrnaeum Boiss. & Bal.

N side of Avlankuzu mountain, stony slopes, 1550 m, 21.v.2001, Deniz 1566.

***E. repandum** L.

N side of Avlankuzu mountain, openings in macchie, 1350 m, 08.iv.2001, Deniz 1094.

Alliaria petiolata (M.Bieb.) Cavara & Grande

Koca Ardiç, under forest, 1500 m, 26.iv.2001, Deniz 1201.

Sisymbrium altissimum L.

Around entrance road, openings in macchie, 1150 m, 06.v.2001, Deniz 1863.

S. orientale L.

Sarnıç field, meadows, 1350 m, 07.v.2001, Deniz 1412.

Descurainia sophia (L.) Webb ex Prantl

Old road of Avlan lake, meadows, 1100 m, 15.iv.2002, Deniz 2122.

Camelina rumelica Vell.

Around watchman's house, rocky places, 1300 m, 08.v.2001, Deniz 1435.

***C. hispida** Boiss. var. *grandiflora* (Boiss.) Hedge

Çiğircik plateau, under forest, 1850 m, 24.vii.2001, Deniz 1975. End.

RESEDACEAE

Reseda lutea L. var. *lutea*

Entrance road, meadows, 1100 m, 21.v.2001, Deniz 1609.

R. luteola L.

Entrance road, openings in macchie, 1150 m, 20.vi.2001, Deniz 1866.

CISTACEAE

Helianthemum nummularium (L.) Mill. subsp. *tomentosum* (Scop.) Schinz & Thell.

N side of Avlankuzu mountain, under forest, 1400 m, 08.iv.2001, Deniz 1128.

H. salicifolium (L.) Mill.

Between Gümüş Bucağı and Sarnıç field, stony places, 1100 m, 15.iv.2002, Deniz 2103.

VIOLACEAE

Viola occulta Lehm.

Kebap field, meadows, 1400 m, 21.v.2001, Deniz 1553.

V. parvula Tineo

End of Kızlar Sivrisi road, steppe, 1750 m, 07.v.2001, Deniz 1381.

V. kitaibeliana Roem. & Schult.

Çamkuyu, under forest, 1700 m, 20.v.2001, Deniz 1496.

V. heldreichiana Boiss.

N of Göltarla village, under forest, 1500 m, 08.iv.2001, Deniz 1079. E. Medit. El.

POLYGALACEAE

Polygala pruinosa Boiss. subsp. *pruinosa*

W side of Kızlar Sivrisi, steppe, 2150 m, 24.v. 2001, Deniz 1400.

PORTULACACEAE

Portulaca oleracea L.

Around entrance sign, meadows, 1100 m, 27.v.2001, Deniz 1995.

CARYOPHYLLACEAE

Arenaria macrosepala Boiss.

Entrance road, openings in macchie, 1200 m, 06.v.2001, Deniz 1308. End.

Minuartia dianthifolia (Boiss.) Hand.-Mazz. subsp. *dianthifolia*

Akaba plateau, rocky places, 1750 m, 24.v.2001, Deniz 1692. End.

M. hamata (Hausskn.) Mattf.

Between Çamkuyu and Kızlar Sivrisi, under forest, 1750 m, 20.v.2001, Deniz 1499.

M. leucocephala (Boiss.) Mattf.

W side of Kızlar Sivrisi, Tek ardiç, steppe, 2200 m, 09.vi.2001, Deniz 1764. End.

M. anatolica (Boiss.) Woron. var. *polymorpha* McNeill

Çamkuyu Cedar Forest, NW side of Karakuyu, Ca: 1280 m. Calcareous, 3.vii.1974. R. ÇETİK.

M. mesogitana (Boiss.) Hand.-Mazz. subsp. *kotschyana* (Boiss.) McNeill

Around entrance sign, meadows, 1100 m, 06.v.2001, Deniz 1324.

M. hybrida (Vill.) Schischk. subsp. *hybrida*

Kebap field, meadows, 1400 m, 21.v.2001, Deniz 1554.

Cerastium anomalum Waldst. & Kit.

Entrance road, openings in macchie, 1100 m, 15.iv.2002, Deniz 2131.

C. dichotomum L. subsp. *dichotomum*

Akaba plateau, steppe, 1750 m, 07.v.2001, Deniz 1375.

C. brachypetalum Pers. subsp. *roeseri* (Boiss. & Heldr.) Nyman

Between Çamkuyu and Kızlar Sivrisi, under forest, 1750 m, 20.v.2001, Deniz 1535.

C. fragillimum Boiss.

End of Kızlar Sivrisi road, steppe, 1800 m, 07.v.2001, Deniz 1368.

Holosteum umbellatum L. var. *umbellatum*

Between Çamkuyu and Akaba plateau, meadows, 1750 m, 07.vi.2001, Deniz 1221.

Sagina apetala Ard.

Sarnıç field, openings in macchie, 1450 m, 30.iv.2001, Deniz 1245.

**Spergularia rubra* (L.) J. & C. Presl

N slope of Alişar hill, under forest, 1750 m, 09.vi.2001, Deniz 1758.

Telephium imperati L. subsp. *orientale* (Boiss.) Nyman

W of Sarnıç field, rocky places, 1250 m, 23.v.2001, Deniz 1662.

**Dianthus leptopetalus* Willd.

W side of Kızlar Sivrisi, steppe, 2300 m, 10.vi.2001, Deniz 1779.

D. crinitus Sm. var. *crinitus*

Around entrance sign, meadows, 1100 m, 10.vii.2001, Deniz 1892.

D. brevicaulis Fenzl subsp. *setaceus* Reeve

Çiğircik plateau, steppe, 2000 m, 24.vii.2001, Deniz 1962. End.

D. zonatus Fenzl var. *zonatus*

W of Sarnıç field, rocky places, 1150 m, 23.v.2001, Deniz 1668.

D. calocephalus Boiss.

Around watchman's house, openings in macchie, 1400 m, 05.v.2001, Deniz 1287.

Velezia rigida L.

Old road of Avlan lake, under forest, 1100 m, 17.vi.2002, Deniz 2257.

Saponaria pumilio Boiss.

Çiğircik plateau, rocky places, 1900 m, 28.ix.2001, Deniz 2047.

S. glutinosa M.Bieb.

Between Tavşan and Kalaycı fields, under forest, 1550 m, 19.vi.2001, Deniz 1845

S. orientalis L.

Between Kalaycı field and Alişar hill, under forest, 1550 m, 09.vi.2001, Deniz 1740.

S. chlorifolia Kunze

Alişar hill, under forest, 1750 m, 09.vi.2001, Deniz 1757. End.

S. pinetorum Hedge var. *elatior* Ekim & Hedge

Kalaycı field, meadows, 1600 m, 19.vi.2001, Deniz 1842. End. E. Medit. El.

Vaccaria pyramidata Medik. var. *grandiflora* (Fisch. ex DC.) Cullen

Gümüş Bucağı, roadsides, 1050 m, 17.vi.2002, Deniz 2247.

Silene italica (L.) Pers.

W side of Kızlar Sivrisi, rocky places, 2300 m, 10.vi.2001, Deniz 1768.

S. gigantea L. var. *incana* (Griseb.) Chowdhuri

Çamkuyu, Sarnıç field, SW side of Avlan lake and Gümüş Bucağı, Ca: 1400 m. Calcareous, 3.vii.1974. R. ÇETİK. E. Medit. El.

S. armena (Boiss.) var. *serrulata* (Boiss.) Coode & Cullen

Entrance road, roadsides, 1100 m, 20.vi.2001, Deniz 1870.

S. chlorifolia Sm.

W of Sarnıç field, rocky places, 1150 m, 23.v.2001, Deniz 1664. Ir.-Tur. El.

S. cappadocica Boiss. & Heldr.

Çamkuyu, meadows, 1660 m, 19.vi.2001, Deniz 1791. Ir.-Tur. El.

S. supina M.Bieb. subsp. *pruinosa* (Boiss.) Chowdhuri

Çamkuyu forest, Sarnıç field, SW side of Avlan lake and Gümüş Bucağı, Ca: 1400 m. 2.vii.1974. R. ÇETİK.

S. vulgaris (Moench) Garcke var. *vulgaris*

Çamkuyu, meadows, 1660 m, 19.vi.2001, Deniz 1810.

S. leptoclada Boiss.

Aliç field, under forest, 1450 m, 23.v.2001, Deniz 1626. End. E. Medit. El.

S. rhynchocarpa Boiss.

Çamkuyu, under forest, 1800 m, 20.v.2001, Deniz 1512.

S. noctiflora L.

E of Sarnıç field, stony places, 1400 m, 07.v.2001, Deniz 1350.

S. echinospermoides Hub.-Mor.

Around watchman's house, under forest, 1350 m, 06.v.2001, Deniz 1307. End. E. Medit. El.

S. cryptoneura Stapf

Top of Avlankuzu mountain, stony places, 1880 m, 09.vi.2001, Deniz 1750. End.

S. aegyptiaca (L.) L.f. subsp. *aegyptiaca*
Kebap field, meadows, 1400 m, 25.v.2001, Deniz 1050.

S. behen L.

Çamkuyu, under forest, 1670 m, 19.vi.2001, Deniz 1814.

S. squamigera Boiss. subsp. *squamigera*

Around watchman's house, openings in macchie, 1400 m, 20.v.2001, Deniz 1488. E. Medit. El.

S. dichotoma Ehrh. subsp. *dichotoma*

Gümüş Bucağı, under forest, 1100 m, 23.v.2001, Deniz 1676.

S. conoidea L.

N of Göltaarla village, under forest, 1200 m, 21.v.2001, Deniz 1593.

Agrostemma githago L.

Çamkuyu, meadows, 1660 m, 09.vi.2001, Deniz 1728.

ILLECEBRACEAE

Herniaria incana Lam.

Around entrance road, openings in macchie, 1200 m, 17.v.2001, Deniz 1482.

Paronychia argyroloba Stapf

Old road of Avlan lake, openings in macchie, 1150 m, 23.v.2001, Deniz 1688. End.

POLYGONACEAE

Atraphaxis billardieri Jaub. & Spach var. *billardieri*

Sarıç field, meadows, 1400 m, 07.v.2001, Deniz 1414. Ir.-Tur. El.

Polygonum amphibium L.

Sarıç field, meadows, 1400 m, 20.vi.2001, Deniz 1860.

P. bellardii All.

Sarıç field, under forest, 1400 m, 22.x.2001, Deniz 2068.

**Rumex angustifolius* Campd. subsp. *angustifolius*

Between Gümüş Bucağı and Sarıç field, stony places, 1100 m, 17.vi.2002, Deniz 2253. Ir.-Tur. El.

CHENOPODIACEAE

Beta lomatogona Fisch. & C.A.Mey.

Çamkuyu, under forest, 1660 m, 15.iv.2002, Deniz 2148. Ir.-Tur. El.

Chenopodium foliosum (Moench) F.Asch.

N of Çamkuyu, meadows, 1660 m, 09.vi.2002, Deniz 2153.

C. album L. subsp. *album* var. *album*

N of entrance road, openings in macchie, 1100 m, 13.v.2001, Deniz 2226.

Spinacia tetrandra Stev.

Göltaarla village, gardens and fields, 1100 m, 22.x.2001, Deniz 2067. (Culture).

AMARANTHACEAE

**Amaranthus retroflexus* L.

Sarıç field, under forest, 1550 m, 22.x.2001, Deniz 2061.

FRANKENIACEAE

Frankenia pulverulenta L.

Around Avlan lake, meadows, 1050 m, 17.vi.2002, Deniz 2250.

HYPERICACEAE

Hypericum scabrum L.

Around entrance sign, meadows, 1100 m, 20.v.2002, Deniz 2214. Ir.-Tur. El.

**H. lanuginosum* Lam. var. *scabrellum* (Boiss.) Robson

Tavşan field, meadows, 1450 m, 23.v.2001, Deniz 1623. End. E. Medit. El.

H. atomarium Boiss.

Around entrance sign, meadows, 1100 m, 10.vii.2001, Deniz 1906. E. Medit. El.

H. aviculariifolium Jaub. & Spach subsp. *depilatum* (Frey & Bornm.) Robson var. *bourgaei* (Boiss.) Robson

Çiğircik plateau, steppe, 2000 m, 20.v.2002, Deniz 2222. End.

H. tetrapterum Fr.

Around watchman's house, openings in macchie, 1150 m, 10.vii.2001, Deniz 1911.

MALVACEAE

Hibiscus esculentus L.

Göltaarla village, gardens and fields, 1100 m, 09.x.2002, Deniz 2291. (Culture).

Malva sylvestris L.

Entrance road, openings in macchie, 1100 m, 28.viii.2001, Deniz 2022.

M. neglecta Wallr.

Hüseyincik plateau, meadows, 1800 m, 25.v.2001, Deniz 1725.

Alcea pallida Waldst. & Kit.

Sarıç field, meadows, 1450 m, 20.vi.2001, Deniz 1867.

LINACEAE

Linum obtusatum (Boiss.) Stapf

W side of Kızlar Sivrisi, steppe, 2200 m, 09.vi.2001, Deniz 1765. End. Ir.-Tur. El.

**L. austriacum* L. subsp. *austriacum*

W of Sarıç field, rocky places, 1250 m, 21.v.2001, Deniz 1584.

**L. austriacum* L. subsp. *glaucescens* (Boiss.) P.H.Davis

Around watchman's house, under forest, 1350 m, 06.v.2001, Deniz 1294.

L. bienne Mill.

E of entrance road, openings in macchie, 1150 m, 13.v.2002, Deniz 2163. Medit. El.

GERANIACEAE

Geranium rotundifolium L.

Around entrance road, openings in macchie, 1100 m, 08.iv.2001, Deniz 1073.

G. divaricatum Ehrh.

Entrance road, under forest, 1100 m, 17.v.2002, Deniz 2145.

G. tuberosum L. subsp. *tuberosum*

Between Alişar hill and Burçaklı, under forest, 1660 m, 22.v.2001, Deniz 1607.

Erodium cicutarium (L.) L'Hér. subsp. *cicutarium*

S side of Avlankuzu mountain, under forest, 1500 m, 08.iv.2001, Deniz 1068.

**E. cicutarium* (L.) L'Hér. subsp. *bipinnatum* (Cav.) Tourlet

S side of Avlankuzu mountain, under forest, 1100 m, 08.iv.2001, Deniz 1097.

Pelargonium peltatum (L.) L'Hér.

Göltaarla village, gardens and fields, 1050 m, 09.vi.2001, Deniz 1743.

- ZYGOPHYLLACEAE**
- Tribulus terrestris* L.
S of entrance road, openings in macchie, 1100 m, 28.viii.2001, Deniz 1991.
- RUTACEAE**
- Haplophyllum suaveolens* (DC.) G.Don var. *suaveolens*
Göltarla village, gardens and fields, 1050 m, 17.vi.2002, Deniz 2274.
- SIMAROUBACEAE**
- Ailanthus altissima* (Mill.) Swingle
S slope of Ališar hill, under forest, 1660 m, 24.vii.2001, Deniz 1998.
- ACERACEAE**
- Acer hyrcanum* Fisch. & C.A.Mey. subsp. *sphaerocarpon* Yalt.
Between Ališar hill and Avlankuzu mountain, rocky places, 1750 m, 22.v.2001, Deniz 1619. End. E. Medit. El.
- A. monspessulanum* L. subsp. *monspessulanum*
Around watchman's house, openings in macchie, 1350 m, 06.v.2001, Deniz 1306.
- VITACEAE**
- Vitis vinifera* L.
Göltarla village, gardens and fields, 1050 m, 28.vii.2001, Deniz 2049. (Culture).
- ANACARDIACEAE**
- Pistacia terebinthus* L. subsp. *palaestina* (Boiss.) Engl.
S side of Avlankuzu mountain, openings in macchie, 1350 m, 24.vii.2001, Deniz 1964. E. Medit. El.
- FABACEAE**
- Genista albida* Willd.
Around watchman's house, openings in macchie, 1400 m, 07.v.2001, Deniz 1269
- Lotononis genistoides* (Fenzl) Benth.
N side of Avlankuzu mountain, under forest, 1660 m, 21.v.2001, Deniz 1569. Ir.-Tur. El.
- Robinia pseudoacacia* L.
Çamkuyu, meadows, 1660 m, 19.vi.2001, Deniz 1811
- Colutea cilicica* Boiss. & Bal.
S of Çamkuyu, under forest, 1700 m, 19.vi.2001, Deniz 2149.
- C. melanocalyx* Boiss. & Heldr. subsp. *davisiana* (Browicz) Chamb.
Entrance road, openings in macchie, 1200 m, 06.v.2001, Deniz 1336. End. E. Medit. El.
- Astragalus hamosus* L.
Old road of Avlan lake, meadows, 1100 m, 17.v.2001, Deniz 1457.
- A. pamphylicus* Boiss.
Sarnıç field, stony places, 1400 m, 07.v.2001, Deniz 1415. Medit. El.
- A. oxytropifolius* Boiss.
S of Çamkuyu, under forest, 1800 m, 20.v.2001, Deniz 1513. End. Ir.-Tur. El.
- A. sorgerae* Hub.-Mor. & Chamb.
Çamkuyu, meadows, 1660 m, 19.vi.2001, Deniz 1798. End. Ir.-Tur. El.
- A. macrourus* Fisch. & C.A.Mey. Group c
Çamkuyu road, under forest, 1700 m, 20.v.2001, Deniz 1497. Ir.-Tur. El.
- A. depressus* L. var. *depressus*
W slope of Ališar hill, under forest, 1660 m, 22.v.2001, Deniz 1608.
- A. pinetorum* Boiss.
Kalaycı field, meadows, 1660 m, 26.iv.2001, Deniz 1208. End. Ir.-Tur. El.
- A. microcephalus* Willd.
End of Kızlar Sivrisi road, steppe, 1750 m, 23.v.2001, Deniz 1663a. Ir.-Tur. El.
- A. strictifolius* Boiss. var. *kutepovii* Şirj.
Çamkuyu Cedar Forest, N slope of Karakuyu, Ca: 1900 m, 3.vii.1974. R. ÇETİK. Ir.-Tur. El.
- A. tmoleus* Boiss. var. *bounacanthus* (Boiss.) Chamb.
Çamkuyu, meadows, 1660 m, 19.vi.2001, Deniz 1796. End.
- A. macrocephalus* Willd. subsp. *finitimus* (Bunge) Chamb.
S of entrance road, openings in macchie, 1150 m, 17.v.2001, Deniz 1460. Ir.-Tur. El.
- A. odoratus* Lam.
Between Kalaycı and Alıç fields, under forest, 1600 m, 19.vi.2001, Deniz 1828.
- A. lycius* Boiss.
Çamkuyu, under forest, 1750 m, 09.vi.2001, Deniz 2150. End.
- A. alindanus* Boiss.
Çiğircik plateau, steppe, 2000 m, 13.v.2001, Deniz 2188. End.
- A. microrchis* Barbey
Çamkuyu, meadows, 1660 m, 26.iv.2001, Deniz 1219. End. E. Medit. El.
- A. nitens* Boiss. & Heldr.
Entrance road, openings in macchie, 1200 m, 06.v.2001, Deniz 1357. End. Ir.-Tur. El.
- A. angustifolius* Lam. subsp. *angustifolius* var. *violaceus* Boiss.
End of Kızlar Sivrisi road, steppe, 1750 m, 23.v.2001, Deniz 1663.
- Glycyrrhiza echinata* L.
Gümüş Bucağı, meadows, 1050 m, 17.vi.2002, Deniz 2246.
- Phaseolus vulgaris* L.
Göltarla village, gardens and fields, 1100 m, 20.v.2002, Deniz 2223. (Culture).
- Cicer arietinum* L.
Around Avlan lake, gardens and fields, 1050 m, 15.iv.2002, Deniz 2096. (Culture).
- Vicia cracca* L. subsp. *stenophylla* Vell.
Between Çamkuyu and Hüseyincik road, under forest, 1750 m, 25.v.2001, Deniz 1727.
- V. villosa* Roth subsp. *eriocarpa* (Hauskn.) P.W.Ball
Sarnıç field, openings in macchie, 1400 m, 05.v.2001, Deniz 1289.
- V. anatolica* Turrill
Crossroad on the Kızlar Sivrisi road, under forest, 1750 m, 20.v.2001, Deniz 1502. Ir.-Tur. El.
- V. hybrida* L.
Sarnıç field, meadows, 1400 m, 06.v.2001, Deniz 1291.
- V. cuspidata* Boiss.
Around entrance sign, meadows, 1100 m, 15.iv.2002, Deniz 2105. E. Medit. El.

- V. lathyroides** L.
Çamkuyu, under forest, 1700 m, 08.v.2001, Deniz 1424.
- Lens orientalis** (Boiss.) Hand.-Mazz.
Gümüş Bucağı, stony places, 1250 m, 20.vi.2001, Deniz 1856.
- L. culinaris** Medik.
Göltarla village, gardens and fields, 1100 m, 20.v.2002, Deniz 2218. (Culture).
- Lathyrus digitatus** (M.Bieb.) Fiori
S of Göltarla village, edge of fields, 1100 m, 08.iv.2001, Deniz 1112. E. Medit. El.
- L. saxatilis** (Vent.) Vis.
Gümüş Bucağı, openings in macchie, 1100 m, 26.iv.2001, Deniz 1164. Medit. El.
- L. setifolius** L.
Gümüş Bucağı, openings in macchie, 1100 m, 26.iv.2001, Deniz 1168. Medit. El.
- L. cicera** L.
Entrance road, openings in macchie, 1150 m, 06.v.2001, Deniz 1346.
- Pisum sativum** L. subsp. **elatius** (M.Bieb.) F.Asch. & Graebn. var. **pumilio** Meikle
Entrance road, openings in macchie, 1150 m, 06.v.2001, Deniz 1347.
- Vavilovia formosa** (Stev.) Fed.
W side of Kızlar Sivrisi, stony places, 2100 m, 24.v.2001, Deniz 1704.
- Ononis adenotricha** Boiss. var. **adenotricha**
Çiğircik plateau, under forest, 1850 m, 20.iv.2001, Deniz 1523. E. Medit. El.
- O. pusilla** L.
S of Çamkuyu, under forest, 1750 m, 13.v.2002, Deniz 2151. Medit. El.
- O. spinosa** L. subsp. **antiquorum** (L.) Briq.
Tavşan field, meadows, 1400 m, 11.vii.2001, Deniz 1941. Medit. El.
- Trifolium hybridum** L. var. **anatolicum** (Boiss.) Boiss.
Kalaycı field, meadows, 1600 m, 11.vii.2001, Deniz 1933.
- T. campestre** Schreb.
Old road of Avlan lake, meadows, 1150 m, 23.v.2001, Deniz 1685.
- T. physodes** Stev. ex M.Bieb. var. **physodes**
S of Göltarla village, edge of fields, 1150 m, 08.iv.2001, Deniz 1126. Medit. El.
- T. caudatum** Boiss.
Old road of Avlan lake, meadows, 1150 m, 23.v.2001, Deniz 1685 a. End.
- T. lucanicum** Gasp.
N of Gümüş Bucağı, openings in macchie, 1150 m, 23.v.2001, Deniz 1681. Medit. El.
- T. hirtum** All.
Gümüş Bucağı, openings in macchie, 1150 m, 23.v.2001, Deniz 1680. Medit. El.
- Melilotus officinalis** (L.) Desr.
Around entrance sign, meadows, 1100 m, 17.v.2001, Deniz 1451.
- Trigonella lunata** Boiss.
Sarnıç field, openings in macchie, 1500 m, 08.v.2001, Deniz 1434. Ir.-Tur. El.
- T. lycica** Hub.-Mor.
S of Göltarla village, openings in macchie, 1150 m, 08.iv.2001, Deniz 1132. End. E. Medit. El.
- T. spruneriana** Boiss. var. **spruneriana**
S of entrance road, openings in macchie, 1150 m, 06.v.2001, Deniz 1344. Ir.-Tur. El.
- T. aurantiaca** Boiss.
Çamkuyu, meadows, 1660 m, 07.viii.2001, Deniz 1401. Ir.-Tur. El.
- T. crassipes** Boiss.
Entrance road, openings in macchie, 1150 m, 15.iv.2002, Deniz 2140. Ir.-Tur. El.
- T. cariensis** Boiss.
Gümüş Bucağı, openings in macchie, 1150 m, 23.v.2001, Deniz 1684. E. Medit. El.
- Medicago orbicularis** (L.) Bartram
Around Elmalı-Finike road, meadows, 1050 m, 20.v.2002, Deniz 2215.
- M. minima** (L.) Bartram var. **minima**
Entrance road, meadows, 1100 m, 17.v.2001, Deniz 1456.
- M. disciformis** DC.
Sarnıç field, meadows, 1400 m, 20.v.2002, Deniz 2203. Medit. El.
- M. polymorpha** L. var. **vulgaris** (Benth.) Shinnars
S of entrance road, openings in macchie, 1150 m, 15.iv.2002, Deniz 2144.
- Lotus palustris** Willd.
Çamkuyu, meadows, 1660 m, 20.vi.2001, Deniz 1880.
- L. corniculatus** L. var. **corniculatus**
Kalaycı field, meadows, 1600 m, 28.viii.2001, Deniz 2017.
- L. corniculatus** L. var. **tenuifolius** L.
Between Aliç and Kalaycı fields, under forest, 1550 m, 28.viii.2001, Deniz 2005.
- Coronilla emerus** L. subsp. **emeroides** (Boiss. & Spruner) Hrabětova
Sarnıç field, openings in macchie, 1400 m, 26.iv.2001, Deniz 1186.
- C. scorpioides** (L.) Koch
Old road of Avlan lake, openings in macchie, 1150 m, 23.v.2001, Deniz 1683.
- C. varia** L. subsp. **varia**
Old road of Avlan lake, openings in macchie, 1150 m, 23.v.2001, Deniz 1689.
- Onobrychis cornuta** (L.) Desv.
Around Avlan lake, openings in macchie, 1150 m, 23.v.2001, Deniz 1687. Ir.-Tur. El.
- O. caput-galli** (L.) Lam.
W of Sarnıç field, openings in macchie, 1400 m, 20.vi.2001, Deniz 1876. Medit. El.
- O. montana** DC. subsp. **cadmea** (Boiss.) P.W.Ball
Aliç field, under forest, 1550 m, 19.vi.2001, Deniz 1838.
- O. armena** Boiss. & A.L.P.Huet
Sarnıç field, openings in macchie, 1400 m, 05.v.2001, Deniz 1288. End.
- Ebenus boissieri** Barbey
Around watchman's house, stony places, 1400 m, 06.v.2001, Deniz 1298. End. E. Medit. El.
- ROSACEAE**
- Prunus x domestica** L.
Çamkuyu, meadows, 1660 m, 19.vi.2001, Deniz 2070.
- ***P. cocomilia** Ten. var. **cocomilia**
Entrance road, roadsides, 1100 m, 15.iv.2002, Deniz 2124.

P. cocomilia Ten. var. *puberula* (C.K.Schneid.) Browicz

Çamkuyu, under forest, 1660 m, 07.v.2001, Deniz 1389. End.

Cerasus prostrata (Labill.) Ser. var. *prostrata*

Gümüş Bucağı, meadows, 1100 m, 26.iv.2001, Deniz 1202. Medit. El.

**C. incana* (Pall.) Spach var. *incana*

S of entrance road, openings in macchie, 1150 m, 15.iv.2002, Deniz 2128. Ir.-Tur. El.

C. microcarpa (C.A.Mey.) Boiss. subsp. *microcarpa*

Tavşan field, stony slopes, 1400 m, 11.vii.2001, Deniz 1944.

C. avium (L.) Moench

Göltarla village, gardens and fields, 1050 m, 07.v.2001, Deniz 1391. (Culture).

Persica vulgaris Mill.

Göltarla village, gardens and fields, 1050 m, 15.iv.2002, Deniz 2135. (Culture).

Amygdalus communis L.

Çamkuyu, meadows, 1660 m, 07.v.2001, Deniz 1392.

A. orientalis Mill.

Gümüş Bucağı, stony slopes, 1050 m, 21.iii.2001, Deniz 1042. Ir.-Tur. El.

Potentilla recta L.

Çamkuyu, under forest, 1660 m, 19.vi.2001, Deniz 1821.

P. kotschyana Fenzl

N of Aışar hill, under forest, 1700 m, 21.v.2001, Deniz 1598. E. Medit. El.

P. reptans L.

Sarnıç field, meadows, 1400 m, 07.v.2001, Deniz 1440.

Geum urbanum L.

Between Aışar hill and Avlankuzu mountain, under forest, 1800 m, 07.v.2001, Deniz 1402. Euro-Sib. El.

Agrimonia eupatoria L.

Aışar hill, under forest, 1660 m, 24.vii.2001, Deniz 1957.

Sanguisorba minor Scop. subsp. *minor*

Tavşan field, under forest, 1550 m, 11.vii.2001, Deniz 1937.

S. minor Scop. subsp. *magnolii* (Spach) Briq.

S of entrance road, openings in macchie, 1100 m, 13.v.2002, Deniz 2165.

Rosa pulverulenta M.Bieb.

Çamkuyu Cedar Forest, Karakuyu, NE slope. Ca: 1920 m, Calcareous, 3.vii.1974. R. ÇETİK.

R. horrida Fisch.

Entrance road, stony slopes, 1250 m, 06.v.2001, Deniz 1321.

R. canina L.

Around entrance sign, openings in macchie, 1100 m, 27.viii.2001, Deniz 1999.

Cotoneaster nummularia Fisch. & C.A.Mey.

W of Sarnıç field, stony slopes, 1250 m, 23.v.2001, Deniz 1654.

Crataegus aronia (L.) Bosc ex DC. var. *aronia*

S of entrance road, openings in macchie, 1150 m, 17.v. 2001, Deniz 1458.

C. aronia (L.) Bosc ex DC. var. *minuta* Browicz

S slope of Avlankuzu mountain, under forest, 1450 m, 21.v.2001, Deniz 1588. End. E. Medit. El.

C. monogyna Jacq. subsp. *monogyna*

Around watchman's house, stony slopes, 1400 m, 06.v. 2001, Deniz 1297.

Sorbus umbellata (Desf.) Fritsch var. *umbellata*

Between Aışar hill and Avlankuzu mountain, rocky places, 1700 m, 22.v.2001, Deniz 1618.

Malus sylvestris Mill. subsp. *orientalis* (Uglitzk.) Browicz var. *orientalis*

Crossroad on the Kızlar Sivrisi road, meadows, 1700 m, 07.v.2001, Deniz 1361.

M. sylvestris Mill. subsp. *mitis* (Wallr.) Mansf.

Çamkuyu field, meadows, 1660 m, 07.v.2001, Deniz 1378.

Pyrus communis L. subsp. *communis*

Around Çamkuyu guest-house, meadows, 1660 m, 27.viii.2001, Deniz 2009.

P. amygdaliformis Vill. var. *amygdaliformis*

Around entrance sign, meadows, 1100 m, 27.viii.2001, Deniz 2001. E. Medit. El.

P. elaeagnifolia Pall. subsp. *elaeagnifolia*

Entrance road, roadsides, 1100 m, 17.v.2001, Deniz 1450.

Amelanchier rotundifolia (Lam.) Dum.Cours. subsp. *rotundifolia*

S side of Avlankuzu mountain, stony slopes, 1350 m, 21.v.2001, Deniz 1589. E. Medit. El.

A. parviflora Boiss. var. *parviflora*

Around watchman's house, openings in macchie, 1350 m, 17.v.2001, Deniz 1473. End. E. Medit. El.

A. parviflora Boiss. var. *dentata* Browicz

Gümüş Bucağı, shore of Avlan lake, 1100 m, 23.v.2001, Deniz 1672. End. E. Medit. El.

LYTHRACEAE

Lythrum junceum Banks & Sol.

Sarnıç field, openings in macchie, 1450 m, 30.iv.2001, Deniz 1251. Medit. El.

ONOGRACEAE

Epilobium angustifolium L.

Akaba plateau, steppe, 1800 m, 10.vi.2001, Deniz 1777.

E. hirsutum L.

Çiğircik plateau, steppe, 1900 m, 24.vii.2001, Deniz 1972.

E. lanceolatum Sebast. & Mauri

S of Sarnıç field, openings in macchie, 1400 m, 21.v.2001, Deniz 1549.

CUCURBITACEAE

Citrullus lanatus (Thunb.) Matsum. & Nakai

Göltarla village, gardens and fields, 1100 m, 09.x.2002, Deniz 2288. (Culture).

Bryonia multiflora Boiss. & Heldr.

Crossroad on the Kızlar Sivrisi road, stony places, 1700 m, 07.v.2001, Deniz 1404. Ir.-Tur. El.

Cucumis melo L.

Göltarla village, gardens and fields, 1100 m, 09.x.2002, Deniz 2287. (Culture).

C. sativus L.

Göltarla village, gardens and fields, 1100 m, 17.vi.2002, Deniz 2280. (Culture).

CRASSULACEAE**Umbilicus erectus** DC.

S of entrance road, openings in macchie, 1100 m, 10.vii.2001, Deniz 1902.

Rosularia globulariifolia (Fenzl) Berger

Around Avlan lake, rocky places, 1100 m, 20.v.2002, Deniz 2201. End. E. Medit. El.

Sedum amplexicaule DC.

Around Burçaklı, under forest, 1600 m, 09.vi.2001, Deniz 1782. Medit. El.

S. album L.

Top of Avlankuzu mountain, stony places, 1880 m, 09.vi.2001, Deniz 1751.

S. magellense Ten.

Çamkuyu, under forest, 1660 m, 02.vi.2002, Deniz 2146. Medit. El.

S. sempervivoides M.Bieb.

Akaba plateau, steppe, 2100 m, 10.vi.2001, Deniz 1772.

APIACEAE

Eryngium bourgatii Gouan subsp. **heldreichii** (Boiss.) P.H.Davis

Çamkuyu, under forest, 1700 m, 20.v.2001, Deniz 1490. E. Medit. El.

E. campestre L. var. **virens** Link

Akaba plateau, steppe, 1850 m, 28.ix.2001, Deniz 2038.

Anthriscus nemorosa (M.Bieb.) Spreng.

S of Göltarla village, openings in macchie, 1100 m, 08.iv.2001, Deniz 1140.

Scandix stellata Banks & Sol.

N of entrance road, under forest, 1250 m, 06.v.2001, Deniz 1326.

S. iberica M.Bieb.

Çamkuyu, under forest, 1750 m, 08.v.2001, Deniz 1429.

S. pecten-veneris L.

Hüseyincik plateau, under forest, 1800 m, 25.v.2001, Deniz 1726.

S. australis L. subsp. **grandiflora** (L.) Thell.

Around watchman's house, openings in macchie, 1350 m, 21.v.2001, Deniz 1541.

Bunium microcarpum (Boiss.) Freyn subsp. **microcarpum**

Crossroad on the Kızlar Sivrisi road, under forest, 1700 m, 07.v.2002, Deniz 1397. E. Medit. El.

B. ferulaceum Sm.

Çamkuyu, under forest, 1700 m, 20.v.2001, Deniz 1510. Medit. El.

B. pestalozzae Boiss.

S of entrance sign, openings in macchie, 1100 m, 13.v.2002, Deniz 2177. E. Medit. El.

Huetia cynapioides (Guss.) P.W.Ball subsp. **macrocarpa** (Boiss. & Spruner) P.W.Ball

Çiğircik plateau, under forest, 1800 m, 20.v.2001, Deniz 1522.

Pimpinella tragium Vill. subsp. **lithophila** (Schischk.) Tutin

S of Çamkuyu, under forest, 1660 m, 28.ix.2001, Deniz 2054.

Seseli tortuosum L.

Tavşan field, meadows, 1450 m, 11.vii.2001, Deniz 1934.

Bupleurum croceum Fenzl

Çamkuyu, meadows, 1660 m, 19.vi.2001, Deniz 1797. Ir.-Tur. El.

B. sulphureum Boiss. & Bal.

S of entrance sign, openings in macchie, 1100 m, 17.vi.2002, Deniz 2258. End. Ir.-Tur. El.

Falcaria vulgaris Bernh.

Around entrance sign, meadows, 1100 m, 10.vii.2001, Deniz 1894.

Johrenia dichotoma DC. subsp. **dichotoma**

Old road of Avlan lake, openings in macchie, 1200 m, 23.v.2001, Deniz 1687.

Ferulago aucheri Boiss.

Around entrance road, openings in macchie, 1100 m, 13.v.2002, Deniz 2225. End.

Peucedanum chryseum (Boiss. & Heldr.) Chamb.

Çamkuyu, meadows, 1660 m, 27.ix.2001, Deniz 2023. End.

Tordylium lanatum (Boiss.) Boiss.

N of Çamkuyu, under forest, 1800 m, 25.v.2001, Deniz 1724. End. E. Medit. El.

Laser trilobum (L.) Borkh.

S of Göltarla village, under forest, 1550 m, 08.iv.2001, Deniz 1061.

Laserpitium petrophilum Boiss. & Heldr.

Between Kebap and Tavşan fields, roadsides, 1400 m, 23.v.2001, Deniz 1636. End. E. Medit. El.

Turgenia latifolia (L.) Hoffm.

Around watchman's house, openings in macchie, 1350 m, 17.v.2001, Deniz 1476.

Orlaya daucooides (L.) Greuter

Çamkuyu, meadows, 1660 m, 19.vi.2001, Deniz 1808. Medit. El.

ARALIACEAE**Hedera helix** L.

Göltarla village, gardens and fields, 1100 m, 10.vii.2001, Deniz 1897.

CAPRIFOLIACEAE

Lonicera nummulariifolia Jaub. & Spach subsp. **glandulifera** (Hub.-Mor.) Chamb.

Around Burçaklı, under forest, 1600 m, 09.vi.2001, Deniz 1734. End. E. Medit. El.

L. etrusca Santi var. **etrusca**

Around Burçaklı, under forest, 1550 m, 19.vi.2001, Deniz 1843. Medit. El.

RUBIACEAE**Asperula arvensis** L.

N side of Avlankuzu mountain, openings in macchie, 1150 m, 08.iv.2001, Deniz 1130. Medit. El.

A. brevifolia Vent.

Around entrance sign, openings in macchie, 1100 m, 20.v.2001, Deniz 1484. End. E. Medit. El.

A. serotina (Boiss. & Heldr.) Ehrend.

Around watchman's house, openings in macchie, 1400 m, 13.v.2002, Deniz 2157. End. E. Medit. El.

Galium verum L. subsp. **verum**

Çamkuyu, meadows, 1660 m, 11.vii.2001, Deniz 1919. Avr.-Sib. El.

G. heldreichii A.D.Hall

Sarnıç field, stony places, 1400 m, 07.v.2001, Deniz 1409. E. Medit. El.

G. incanum Sm. subsp. *centrale* Ehrend.

Around entrance road, openings in macchie, 1100 m, 06.v.2001, Deniz 1340. End. E. Medit. El.

G. incanum Sm. subsp. *elatus* (Boiss.) Ehrend.

Around watchman's house, openings in macchie, 1350 m, 06.v.2001, Deniz 1301. Ir.-Tur. El.

G. dumosum Boiss.

N side of Avlankuzu mountain, under forest, 1550 m, 21.v.2001, Deniz 1567. End.

G. pamphylicum Boiss. & Heldr.

S of entrance road, openings in macchie, 1100 m, 26.iv.2001, Deniz 1172. End. E. Medit. El.

G. spurium L. subsp. *spurium*

S of entrance road, openings in macchie, 1100 m, 26.iv.2001, Deniz 1152. Avr.-Sib. El.

G. peplidifolium Boiss.

Çamkuyu, under forest, 1700 m, 20.v.2001, Deniz 1494. E. Medit. El.

G. brevifolium Sm. subsp. *insulare* Ehrend. & Schönb.-Tem.

S side of Avlankuzu mountain, stony places, 1350 m, 21.v.2001, Deniz 1583. E. Medit. El.

G. floribundum Sm. subsp. *floribundum*

N of Çamkuyu, under forest, 1800 m, 08.v.2001, Deniz 1428.

G. verticillatum Danthoine ex Lam.

W side of Kızlar Sivrisi, steppe, 2400 m, 24.v.2001, Deniz 1713. Medit. El.

Cruciata taurica (Pall. ex Willd.) Ehrend.

Gümüş Bucağı, meadows, 1100 m, 15.iv.2002, Deniz 2136. Ir.-Tur. El.

Rubia tenuifolia d'Urv. subsp. *donietti* (Griseb.) Ehrend. & Schönb.-Tem.

W of Sarnıç field, rocky places, 1250 m, 23.v.2001, Deniz 1659. E. Medit. El.

R. tinctorum L.

Around entrance sign, openings in macchie, 1100 m, 20.vi.2001, Deniz 1864. Ir.-Tur. El.

VALERIANACEAE

Valeriana dioscoridis Sm.

Between entrance road and Gümüş Bucağı, openings in macchie, 1100 m, 15.iv.2002, Deniz 2138, E. Medit. El.

Centranthus longiflorus Stev. subsp. *longiflorus*

Between Sarnıç field and Gümüş Bucağı, stony places, 1150 m, 23.v.2002, Deniz 1666. Ir.-Tur. El.

Valerianella turgida (Stev.) Betcke

Around watchman's house, openings in macchie, 1400 m, 05.v.2001, Deniz 1274.

V. vesicaria (L.) Moench

Between entrance road and Gümüş Bucağı, openings in macchie, 1100 m, 15.iv.2002, Deniz 2139.

MORINACEAE

Morina persica L.

S of Çiğircik plateau, steppe, 1850 m, 24.vii.2001, Deniz 1977. Ir.-Tur. El.

DIPSACACEAE

Cephalaria dipsacoides Boiss. & Bal.

W of Sarnıç field, stony slopes, 1250 m, 28.ix.2001, Deniz 2043. E. Medit. El.

C. lycica Matthews

Around Kızlar Sivrisi road, stony places, 1800 m, 28.viii.2001, Deniz 2013. End. E. Medit. El.

C. scoparia Contandr. & Quézel

Around entrance road, openings in macchie, 1250 m, 27.ix.2001, Deniz 2032. End. E. Medit. El.

Knautia integrifolia (L.) Bert var. *bidens* (Sm.) Borbás

Çamkuyu, under forest, 1660 m, 19.vi.2001, Deniz 1816. E. Medit. El.

Scabiosa argentea L.

Sarnıç field, meadows, 1350 m, 20.vi.2001, Deniz 1871.

S. rotata M.Bieb.

E of Sarnıç field, stony slopes, 1350 m, 07.v.2001, Deniz 1430. Ir.-Tur. El.

Pterocephalus plumosus (L.) Coult.

Around watchman's house, openings in macchie, 1350 m, 23.v.2001. Deniz 1641.

ASTERACEAE

Xanthium spinosum L.

Gümüş Bucağı, openings in macchie, 1100 m, 17.vi.2002, Deniz 2241.

Inula oculus-christi L.

Çamkuyu, meadows, 1660 m, 11.vii.2001, Deniz 2085.

I. heterolepis Boiss.

S side of Avlankuzu mountain, rocky places, 1250 m, 24.vii.2001, Deniz 1960. E. Medit. El.

Helichrysum plicatum DC. subsp. *polyphyllum* (Ledeb.) P.H.Davis & Kupicha

Around watchman's house, stony slopes, 1350 m, 17.v.2001, Deniz 1472.

Evax anatolica Boiss. & Heldr.

Kalaycı field, meadows, 1600 m, 09.vi.2001, Deniz 1733. Ir.-Tur. El.

Conyza canadensis (L.) Cronquist

Between Çamkuyu and Tavşan fields, under forest, 1600 m, 11.vii.2001, Deniz 1932.

Doronicum orientale Hoffm.

N side of Avlankuzu mountain, under forest, 1550 m, 21.v.2001, Deniz 1564.

Senecio cariensis Boiss.

S of Çamkuyu, under forest, 1800 m, 20.v.2001, Deniz 1514. End. E. Medit. El.

S. vernalis Waldst. & Kit.

End of Kızlar Sivrisi road, steppe, 1750 m, 07.v.2001, Deniz 1362.

Anthemis cretica L. subsp. *albida* (Boiss.) Grierson

W slope of Aışar hill, under forest, 1750 m, 22.v.2001, Deniz 1606.

A. cretica L. subsp. *anatolica* (Boiss.) Grierson

Entrance road, openings in macchie, 1200 m, 06.v.2001, Deniz 1331.

- A. cretica* L. subsp. *candidans* (Boiss.) Grierson
N of Aliç field, under forest, 1450 m, 23.v.2001, Deniz 1628.
- A. rosea* Sm. subsp. *carnea* (Boiss.) Grierson
N slope of Alişar hill, under forest, 1750 m, 13.v.2002, Deniz 2193. End. E. Medit. El.
- A. tinctoria* L. var. *tinctoria*
Old road of Avlan lake, openings in macchie, 1100 m, 17.vi.2002, Deniz 2245.
- A. tinctoria* L. var. *discoidea* (All.) DC.
N of Kiraz hill, openings in macchie, 1200 m, 06.v.2001, Deniz 1314.
- A. wiedemanniana* Fisch. & C.A.Mey.
N of Kiraz hill, openings in macchie, 1250 m, 06.v.2001, Deniz 1313. End.
- Achillea lycaonica* Boiss. & Heldr.
Around entrance road, openings in macchie, 1100 m, 20.v.2002, Deniz 2206. End. Ir.-Tur. El.
- A. phrygia* Boiss. & Bal.
W of Sarnıç field, meadows, 1400 m, 23.v.2001, Deniz 1648. End. Ir.-Tur. El.
- Tanacetum cadmeum* (Boiss.) Heywood subsp. *cadmeum*
S of Çiğircik plateau, steppe, 1900 m, 24.vii.2001, Deniz 1984. End.
- T. argenteum* (Lam.) Willd. subsp. *canum* (C.Koch) Grierson var. *pumilum* Grierson
Çamkuyu, meadows, 1660 m, 19.vi.2001, Deniz 1815. End. Ir.-Tur. El.
- **Matricaria aurea* (L.) Schultz
Çamkuyu, under forest, 1660 m, 27.viii.2001, Deniz 2008.
- Tripleurospermum elongatum* (Fisch. & C.A.Mey.) Bornm.
Çamkuyu Research Forest, Çamkuyu, under forest, S slope, Ca: 1600-1800 m. Calcareous, 12.v.1973. R. ÇETİK.
- T. decipiens* (Fisch. & C.A.Mey.) Bornm.
End of Kızlar Sivrisi road, steppe, 1750 m, 24.v.2001, Deniz 1717.
- Onopordum caricum* Hub.-Mor.
Between Çamkuyu and Kızlar Sivrisi road, meadows, 1700 m, 28.viii.2001, Deniz 2012. End. Medit. El.
- O. sibthorpiatum* Boiss. & Heldr.
Çamkuyu, under forest, 1660 m, 11.vii.2001, Deniz 1918. E. Medit. El.
- Cirsium creticum* (Lam.) d'Urv. subsp. *creticum*
Around Avlan lake, meadows, 1050 m, 17.vi.2002, Deniz 2266. E. Medit. El.
- C. libanoticum* DC. subsp. *lycaonicum* (Boiss. & Heldr.) P.H.Davis. & Parris
Sarnıç field, meadows, 1400 m, 11.vii.2001, Deniz 1945. End. E. Medit. El.
- Picnomon acarna* (L.) Cass.
Around watchman's house, openings in macchie, 1350 m, 15.viii.2000, Deniz 1003. Medit. El.
- Notobasis syriaca* (L.) Cass.
Çamkuyu, meadows, 1660 m, 11.vii.2001, Deniz 1924. Medit. El.
- Carduus argentatus* L.
Around Çamkuyu meteorology station, meadows, 1660 m, 28.ix.2001, Deniz 2034. E. Medit. El.
- C. pycnocephalus* L. subsp. *pycnocephalus*
Sarnıç field, openings in macchie, 1350 m, 23.v.2001, Deniz 1644. W. Medit. El.
- C. pycnocephalus* L. subsp. *albidus* (M.Bieb.) Kazmi
Entrance road, openings in macchie, 1100 m, 06.v.2001, Deniz 1329.
- Jurinea consanguinea* DC.
Entrance road, openings in macchie, 1100 m, 17.vi.2002, Deniz 2243.
- J. mollis* (L.) Rchb.
Between Kalaycı field and Alişar hill, under forest, 1660 m, 09.vi.2001, Deniz 1735. E. Medit. El.
- Acroptilon repens* (L.) DC.
Around watchman's house, openings in macchie, 1350 m, 23.v.2001, Deniz 1653. Ir.-Tur. El.
- Centaurea cariensis* Boiss. subsp. *maculiceps* (O.Schwarz) Wagenitz
Sarnıç field, meadows, 1400 m, 20.vi.2001, Deniz 1854. End. E. Medit. El.
- C. virgata* Lam.
Çamkuyu, meadows, 1660 m, 09.vi.2001, Deniz 1729. Ir.-Tur. El.
- C. drabifolia* Sm. subsp. *cappadocica* (DC.) Wagenitz
E of Sarnıç field, stony places, 1400 m, 23. vi.2001, Deniz 1853. End. (E. Medit. El.)
- C. solstitialis* L. subsp. *solstitialis*
Sarnıç field, openings in macchie, 1550 m, 18.ix.2001, Deniz 1769.
- C. iberica* Trev. ex Spreng.
N of Gökyamaç hill, steppe, 1900 m, 24.vii.2001, Deniz 1965.
- C. pestalozzae* Boiss.
N slope of Alişar hill, under forest, 1750 m, 09.vi.2001, Deniz 1759. End. E. Medit. El.
- C. urvillei* DC. subsp. *stepposa* Wagenitz
Sarnıç field, roadsides, 1350 m, 21.v.2001, Deniz 1542. Ir.-Tur. El.
- C. bourgaei* Boiss.
W side of Kızlar Sivrisi, Tek Ardiç, steppe, 2400 m, 24.v.2001, Deniz 1715. End. E. Medit. El.
- C. triumfettii* All.
Entrance road, edge of fields, 1100 m, 17.v.2001, Deniz 1452.
- C. mathiolifolia* Boiss.
Sarnıç field, stony places, 1400 m, 06.v.2001, Deniz 1295. End. Ir.-Tur. El.
- C. thirkei* Schultz
End of Kızlar Sivrisi road, steppe, 1750 m, 07.v.2001, Deniz 1264. E. Medit. El.
- C. depressa* M.Bieb.
Top of Avlankuzu mountain, under forest, 1750 m, 02.v.2001, Deniz 1615.
- C. cyanus* L.
W side of Kızlar Sivrisi, steppe, 1900 m, 10.vi.2001, Deniz 1774.
- Crupina curupinastrum* (Moris.) Vis.
Sarnıç field, openings in macchie, 1500 m, 18.vi.2001, Deniz 1787.
- Xeranthemum cylindraceum* Sm.
Kebap field, meadows, 1400 m, 21.v.2001, Deniz 1550.
- Echinops ritro* L.
Entrance road, openings in macchie, 1150 m, 27.viii.2002, Deniz 2003.
- E. emiliae* O.Schwarz ex P.H.Davis

S of Akaba plateau, steppe, 1850 m, 28.ix.2002, Deniz 2042. End. E. Medit. El.

E. viscosus DC. subsp. *bithynicus* (Boiss.) Rech.f.

S side of Avlankuzu mountain, under forest, 1500 m, 24.vii.2001, Deniz 1959. E. Medit. El.

Scolymus hispanicus L.

Around entrance sign, edge of fields, 1100 m, 20.vi.2001, Deniz 1766. Medit. El.

Cichorium intybus L.

Sarnıç field, openings in macchie, 1450 m, 20.vi.2001, Deniz 1850.

Scorzonera cana (C.A.Mey.) Hoffm. var. *cana*

Sarnıç field, openings in macchie, 1450 m, 26.iv.2001, Deniz 1170.

S. cana (C.A.Mey.) Hoffm. var. *radicosa* (Boiss.) Chamb.

Sarnıç field, meadows, 1400 m, 20.vi.2001, Deniz 1888.

S. suberosa C.Koch subsp. *cariensis* (Boiss.) Chamb.

S of entrance road, openings in macchie, 1150 m, 10.vii.2001, Deniz 1914. End. Ir.-Tur. El.

**S. phaeopappa* (Boiss.) Boiss.

Around entrance road, openings in macchie, 1100 m, 30.iv.2001, Deniz 1236.

Tragopogon longirostris Bisch. ex Sch.Bip. var. *longirostris*

Between Kebap and Tavşan fields, under forest, 1400 m, 23.v.2001, Deniz 1634.

T. pterodes Pančić

N of Çamkuyu, under forest, 1750 m, 08.v.2001, Deniz 1427.

T. latifolius Boiss. var. *angustifolius* Boiss.

Çamkuyu, meadows, 1660 m, 19.vi.2001, Deniz 1792. Ir.-Tur. El.

Leontodon asperrimus (Willd.) Ball

Sarnıç field, stony places, 1400 m, 20.vi.2001, Deniz 1889. Ir.-Tur. El.

L. oxylepis Boiss. & Heldr. var. *oxylepis*

W slope of Gökyamaç hill, steppe, 1900 m, 24.vii.2001, Deniz 1967. E. Medit. El.

Picris strigosa M.Bieb.

Çamkuyu, under forest, 1700 m, 28.viii.2001, Deniz 2016. Ir.-Tur. El.

Sonchus asper (L.) Hill subsp. *glaucescens* (Jord.) Ball

Entrance road, under forest, 1200 m, 10.vii.2001, Deniz 1913.

Cephalorrhynchus tuberosus (Stev.) Schchian

Between Tavşan and Aliç fields, under forest, 1450 m, 23.v.2001, Deniz 1625.

Lactuca serriola L.

Çamkuyu, under forest, 1660 m, 28.viii.2001, Deniz 2010. Avr.-Sib. El.

L. intricata Boiss.

E slope of Gökyamaç hill, steppe, 2000 m, 24.vii.2001, Deniz 1958. E. Medit. El.

Scariola viminea (L.) F.W.Schmidt

Kalaycı field, under forest, 1600 m, 27.ix.2001, Deniz 2029.

Taraxacum aleppicum Dahlst.

Gümüş Bucağı, meadows, 1100 m, 26.iv.2001, Deniz 1220. E. Medit. El.

Condrilla juncea L. var. *juncea*

N of entrance road, meadows, 1100 m, 28.viii.2001, Deniz 1992.

Crepis macropus Boiss. & Heldr.

S of Çamkuyu, under forest, 1800 m, 24.vii.2001, Deniz 1976. End. Ir.-Tur. El.

C. reuterana Boiss. subsp. *reuterana*

Around entrance road, openings in macchie, 1100 m, 17.v.2001, Deniz 1461. E. Medit. El.

C. foetida L. subsp. *rhoeadifolia* (M.Bieb.) Çelak.

Sarnıç field, meadows, 1400 m, 20.vi.2001, Deniz 1883.

C. foetida L. subsp. *commutata* (Spreng.) Babc.

S of Göltaarla village, meadows, 1100 m, 21.v.2001, Deniz 1595.

C. sancta (L.) Babc.

Kebap field, meadows, 1400 m, 21.v.2001, Deniz 1551.

C. setosa Hall.f.

Sarnıç field, openings in macchie, 1500 m, 28.viii.2001, Deniz 2018. Avr.-Sib. El.

CAMPANULACEAE

Campanula lyrata Lam. subsp. *lyrata*

W of Aliç field, under forest, 1450 m, 23.v.2001, Deniz 1631. End.

C. stricta L. var. *stricta*

Çiğircik plateau, stony slopes, 1850 m, 24.vii.2001, Deniz 1971. Ir.-Tur. El.

C. propinqua Fisch. & C.A.Mey.

Around watchman's house, under forest, 1350 m, 06.v.2001, Deniz 1299. Ir.-Tur. El.

C. balansae Boiss. & Hauskn.

Entrance road, roadsides, 1250 m, 06.v.2001, Deniz 1319. End. E. Medit. El.

C. phrygia Jaub. & Spach

Around entrance road, roadsides, 1100 m, 13.v.2002, Deniz 2166. E. Medit. El.

C. peregrina L.

Sarnıç field, openings in macchie, 1450 m, 20.vi.2001, Deniz 1862. E. Medit. El.

Asyneuma limonifolium (L.) Janch. subsp. *limonifolium*

Çiğircik plateau, steppe, 2000 m, 28.ix.2001, Deniz 2037.

A. limonifolium (L.) Janch. subsp. *pestalozzae* (Boiss.) Damboldt

Between Kalaycı field and Alişar hill, under forest, 1660 m, 09.vi.2001, Deniz 1737. End.

A. michauxioides (Boiss.) Damboldt

Between Kalaycı field and Alişar hill, under forest, 1660 m, 19.vi.2001, Deniz 1830. End. E. Medit. El.

A. virgatum (Labill.) Bornm. subsp. *cichoriiforme* (Boiss.) Damboldt

S of entrance road, openings in macchie, 1100 m, 17.vi.2002, Deniz 2255. End. E. Medit. El.

Legousia hybrida (L.) Delarbre

Aliç field, under forest, 1500 m, 19.vi.2001, Deniz 1839. Medit. El.

L. pentagonia (L.) Thell.

Entrance road, openings in macchie, 1150 m, 07.v.2001, Deniz 1318. E. Medit. El.

PRIMULACEAE

Androsace maxima L.

Sarıç field, openings in macchie, 1450 m, 30.iv.2001, Deniz 1249.

**Cyclamen coum* Mill. var. *coum*

Sarıç field, under forest, 1600 m, 21.iii.2001, Deniz 1047.

C. trochopertanthum O.Schwarz

Around entrance road, openings in macchie, 1100 m, 03.iii.2001, Deniz 1013. End. E. Medit. El.

STYRACACEAE

Styrax officinalis L.

N slope of Alişar hill, under forest, 1700 m, 21.v.2001, Deniz 1599.

OLEACEAE

Jasminum fruticans L.

Entrance road, meadows, 1250 m, 30.iv.2001, Deniz 1238. Medit. El.

Fraxinus ornus L. subsp. *cilicica* (Lingelsh.) Yalt.

Entrance road, roadsides, 1250 m, 06.v.2001, Deniz 1309. End. E. Medit. El.

Olea europaea L. var. *europaea*

Göltarla village, gardens and fields, 1100 m, 24.ix.2002, Deniz 2281. (Culture).

APOCYNACEAE

Vinca herbacea Waldst. & Kit.

S of entrance road, openings in macchie, 1150 m, 26.iv.2001, Deniz 1178.

ASCLEPIADACEAE

Vincetoxicum canescens (Willd.) Decne. subsp. *canescens*

Around watchman's house, stony places, 1250 m, 23.v.2001, Deniz 1690. Ir.-Tur. El.

GENTIANACEAE

Centaurium pulchellum (Sw.) Druce

Gümüş Bucağı, meadows, 1100 m, 23.v.2001, Deniz 1624.

CONVOLVULACEAE

Convolvulus lineatus L.

Around entrance sign, meadows, 1100 m, 07.v.2001, Deniz 1352. Ir.-Tur. El.

C. libanoticus Boiss.

Sarıç field, meadows, 1670 m, 19.vi.2001, Deniz 1822. E. Medit. El.

C. arvensis L.

Between Kalaycı and Aliç fields, under forest, 1600 m, 19.vi.2001, Deniz 1831.

C. galaticus Rostan ex Choisy

Sarıç field, meadows, 1400 m, 20.vi.2001, Deniz 1861. End. Ir.-Tur. El.

CUSCUTACEAE

Cuscuta campestris Yunck.

Gümüş Bucağı, under forest, 1100 m, 23.v.2001, Deniz 1673.

C. palaestina Boiss. subsp. *balansae* (Yunck.) Plitmann

Kalaycı field, meadows, 1600 m, 19.vi.2001, Deniz 1849.

BORAGINACEAE

Heliotropium hirsutissimum Grauer

Around watchman's house, openings in macchie, 1400 m, 27.ix.2001, Deniz 2024. E. Medit. El.

Rochelia disperma (L.f.) C.Koch. var. *disperma*

S slope of Yerkaklık hill, openings in macchie, 1450 m, 30.iv.2001, Deniz 1290.

Asperugo procumbens L.

Around Avlan tunnel workers' house, meadows, 1100 m, 08.iv.2001, Deniz 1060. Avr.-Sib. El.

Myosotis ramosissima Rochel ex Schult. subsp. *ramosissima*

Around entrance sign, meadows, 1100 m, 15.iv.2002, Deniz 2099.

M. minutiflora Boiss. & Reut.

S of Göltarla village, stony places, 1350 m, 08.iv.2001, Deniz 1089. Medit. El.

M. refracta Boiss. subsp. *paucipilosa* Grau

S of Göltarla village, openings in macchie, 1250 m, 08.iv.2001, Deniz 1058a. E. Medit. El.

M. alpestris F.W.Schmidt subsp. *alpestris*

Crossroad on the Kızlar Sivrisi road, meadows, 1700 m, 07.v.2001, Deniz 1384.

M. lithospermifolia (Willd.) Hornem.

S of Göltarla village, openings in macchie, 1250 m, 08.iv.2001, Deniz 1058b.

Solenanthes stamineus (Desf.) Wettst.

Çiğircik plateau, meadows, 1900 m, 13.v.2002, Deniz 2189.

Cynoglossum montanum L.

Kebap field, meadows, 1450 m, 21.v.2001, Deniz 1561. Avr.-Sib. El.

Buglossoides arvensis (L.) J.R.Johnst.

Entrance road, roadsides, 1200 m, 15.iv.2002, Deniz 2112.

B. incrassata (Guss.) J.R.Johnst.

Entrance road, roadsides, 1200 m, 25.iii.2002, Deniz 2083. Medit. El.

Neotostema apulum (L.) Johnston

S of Göltarla village, openings in macchie, 1200 m, 08.iv.2001, Deniz 1133. Medit. El.

Echium italicum L.

Çamkuyu, meadows, 1660 m, 19.vi.2001, Deniz 1793. Medit. El.

E. plantagineum L.

Around entrance road, openings in macchie, 1150 m, 20.vi.2001, Deniz 1895. Medit. El.

Moltkia coerulea (Willd.) Lehm.

Gümüş Bucağı, rocky places, 1100 m, 20.v.2002, Deniz 2202. Ir.-Tur. El.

Onosma frutescens Lam.

Around Avlan tunnel workers' house, rocky places, 1100 m, 08.iv.2001, Deniz 1226. E. Medit. El.

O. aucheranum DC.

W side of Kızlar Sivrisi, Tek Ardiç, steppe, 2200 m, 10.vi.2001, Deniz 1778. E. Medit. El.

O. armenum DC.

S of Çamkuyu, under forest, 1800 m, 24.vii.2001, Deniz 1983. End. Ir.-Tur. El.

Cerintho minor L. subsp. *auriculata* (Ten.) Domac

Entrance road, stony places, 1250 m, 17.v.2001, Deniz 1466.

Anchusa undulata L. subsp. *hybrida* (Ten.) Cout.

Sarnıç field, roadsides, 1400 m, 21.v.2001, Deniz 1545. *Medit. El.*

A. azurea Mill. var. *azurea*

Çamkuyu, meadows, 1660 m, 19.vi.2001, Deniz 1794.

A. limbata Boiss. & Heldr.

Sarnıç field, roadsides, 1400 m, 05.v.2001, Deniz 1281. *E. Medit. El.*

**Nonea pulla* (L.) DC. subsp. *scabrisquamata* A. Baytop

Around Kızlar Sivrisi road, meadows, 1750 m, 07.v.2001, Deniz 1387.

**Alkanna kotschyana* DC.

N side of Avlankuzu mountain, under forest, 1600 m, 21.v.2001, Deniz 1572. *End. E. Medit. El.*

A. tubulosa Boiss.

S of Göltaşı village, under forest, 1450 m, 08.iv.2001, Deniz 1072. *End. E. Medit. El.*

A. attilae P.H.Davis

N slope of Aşıar hill, under forest, 1700 m, 22.v.2001, Deniz 1601. *End. E. Medit. El.*

SOLANACEAE

Solanum dulcamara L.

Around Avlan lake, meadows, 1100 m, 24.ix.2002, Deniz 2282. *Euro-Sib. El.*

S. tuberosum L.

Göltaşı village, gardens and fields, 1100 m, 09.x.2002, Deniz 2286. (*Culture*).

Capsicum annuum L.

Göltaşı village, gardens and fields, 1100 m, 24.ix.2002, Deniz 2283. (*Culture*).

Lycopersicon esculentum Mill.

Göltaşı village, gardens and fields, 1100 m, 24.ix.2002, Deniz 2284. (*Culture*).

Hyoscyamus niger L.

Around entrance road, openings in macchie, 1100 m, 08.iv.2001, Deniz 1051.

SCROPHULARIACEAE

Verbascum bourgeauanum Hub.-Mor.

W side of Kızlar Sivrisi, steppe, 2200, 19.vii.2003, Deniz 2319. *End. E. Medit. El.*

V. pestalozzae Boiss.

Çiğircik plateau, steppe, 1900 m, 19.vi.2001, Deniz 1840. *End. E. Medit. El.*

V. nudatum Murb. var. *nudatum*

Around watchman's house, openings in macchie, 1400 m, 21.v.2001, Deniz 1538. *End. E. Medit. El.*

V. sinuatum L. var. *sinuatum*

S of entrance road, openings in macchie, 1100 m, 10.vii.2001, Deniz 1900. *Medit. El.*

V. bellum Hub.-Mor.

Sarnıç field, roadsides, 1400 m, 17.vi.2002, Deniz 2238. *End. E. Medit. El.*

V. pycnostachyum Boiss. & Heldr.

Around Elmalı-Finike road, roadsides, 1050 m, 13.v.2001, Deniz 2236. *End. E. Medit. El.*

**V. davisianum* Hub.-Mor.

Sarnıç field, meadows, 1400 m, 20.vi.2001, Deniz 1872. *End. E. Medit. El.*

V. splendidum Boiss.

Around entrance sign, meadows, 1100 m, 28.viii.2001, Deniz 1993. *End. E. Medit. El.*

V. chrysochaete Stapf

Between Çiğircik plateau and Aşıar hill, under forest, 1800 m, 09.vi.2001, Deniz 1761. *End. E. Medit. El.*

**V. leptocladum* Boiss. & Heldr.

Çamkuyu, meadows, 1660 m, 19.vi.2001, Deniz 1800. *End. E. Medit. El.*

V. orgyale Boiss. & Heldr.

S of entrance road, openings in macchie, 1100 m, 05.v.2001, Deniz 1275. *End. E. Medit. El.*

V. cheiranthifolium Boiss. var. *cheiranthifolium*

Sarnıç field, roadsides, 1400 m, 08.v.2001, Deniz 1444.

Scrophularia canina L. subsp. *bicolor* (Sm.) Greuter

W side of Kızlar Sivrisi, stony slopes, 2200 m, 10.vi.2001, Deniz 1780. *E. Medit. El.*

S. floribunda Boiss. & Bal.

N slope of Aşıar hill, under forest, 1750 m, 09.vi.2001, Deniz 1756. *End. E. Medit. El.*

Linaria genistifolia (L.) Mill. subsp. *confertiflora* (Boiss.) P.H.Davis

S of Çamkuyu, under forest, 1800 m, 24.vii.2001, Deniz 1968. *End. Ir.-Tur. El.*

L. genistifolia (L.) Mill. subsp. *linifolia* (Boiss.) P.H.Davis

Around Kalaycı field, under forest, 1660 m, 27.viii.2001, Deniz 2006.

L. corifolia Desf.

W of Sarnıç field, stony places, 1200 m, 23.v.2001, Deniz 1670. *End. Ir.-Tur. El.*

L. chalepensis (L.) Mill. var. *chalepensis*

Kalaycı field, under forest, 1660 m, 27.ix.2001, Deniz 2025. *E. Medit. El.*

L. kurdica Boiss. & Hohen. subsp. *ericalyx* (Boiss.) P.H.Davis

Gümüş Bucağı, openings in macchie, 1150 m, 23.v.2001, Deniz 1686. *End. Ir.-Tur. El.*

L. simplex (Willd.) DC.

End of Kızlar Sivrisi road, meadows, 1750 m, 08.v.2001, Deniz 1422. *Medit. El.*

Digitalis ferruginea L. subsp. *ferruginea*

S of Çiğircik plateau, steppe, 1900 m, 24.vii.2001, Deniz 1984. *Avr.-Sib. El.*

D. cariensis Boiss. ex Jaub. & Spach

Çamkuyu, under forest, 1660 m, 19.vi.2001, Deniz 1818. *End. E. Medit. El.*

Veronica quezelii M.A.Fisc.

Around Kızlar Sivrisi road, meadows, 1750 m, 07.v.2001, Deniz 1379. *End. E. Medit. El.*

V. pusilla Kotschy var. *pusilla*

Around entrance sign, meadows, 1100 m, 15.iv.2002, Deniz 2098. *Ir.-Tur. El.*

V. praecox All.

Kalaycı field, meadows, 1600 m, 26.iv.2001, Deniz 1216.

V. lycica E.Lehm.

Around entrance road, openings in macchie, 1100 m, 08.iv.2001, Deniz 1070. *End. E. Medit. El.*

V. pectinata L. var. *pectinata*

S of Göltarla village, openings in macchie, 1400 m, 08.iv.2001, Deniz 1057.

V. elmaliensis M.A.Fisc.

Around entrance sign, meadows, 1100 m, 08.iv.2001, Deniz 1124. End. E. Medit. El.

V. cuneifolia D.Don subsp. *cuneifolia*

Gümüş Bucağı, meadows, 1100 m, 26.iv.2001, Deniz 1209. End. E. Medit. El.

Odontites aucheri Boiss.

S of Çiğircik plateau, steppe, 2000 m, 24.vii.2001, Deniz 1969. Ir.-Tur. El.

Pedicularis cadmea Boiss.

W side of Kızlar Sivrisi, rocky places, 2550 m, 24.v.2001, Deniz 1770. End. E. Medit. El.

OROBANCHACEAE

Orobanche cilicica Beck

Çamkuyu, meadows, 1660 m, 20.vi.2001, Deniz 1851.

O. arenaria Borkh.

Aliç field, meadows, 1500 m, 19.vi.2001, Deniz 1834.

O. purpurea Jacq.

Çamkuyu, meadows, 1660 m, 19.vi.2001, Deniz 1807.

ACANTHACEAE

Acanthus hirsutus Boiss.

Around watchman's house, meadows, 1250 m, 17.v.2001, Deniz 1471. End.

GLOBULARIACEAE

Globularia trichosantha Fisch. & C.A.Mey.

End of Kızlar Sivrisi road, steppe, 1800 m, 09.vi.2001, Deniz 1754.

VERBENACEAE

***Verbena supina** L.

Around Avlan lake, meadows, 1100 m, 17.vi.2002, Deniz 2249.

LAMIACEAE

Ajuga chamaepitys (L.) Schreb. subsp. *chia* (Schreb.) Arcang. var. *chia*

N slope of Yerkaklık hill, openings in macchie, 1450 m, 26.iv.2001, Deniz 1198.

A. chamaepitys (L.) Schreb. subsp. *cuneatifolia* (Stapf) P.H.Davis

Sarnıç field, stony places, 1400 m, 22.x.2001, Deniz 2062.

A. bombycina Boiss.

S of Göltarla village, openings in macchie, 1350 m, 08.iv.2001, Deniz 1086. End. E. Medit. El.

Teucrium scordium L. subsp. *scordium*

Sarnıç field, meadows, 1400 m, 20.vi.2001, Deniz 1868. Avr.-Sib. El.

T. chamaedrys L. subsp. *chamaedrys*

Çamkuyu, under forest, 1660 m, 11.vii.2001, Deniz 1925. Avr.-Sib. El.

T. chamaedrys L. subsp. *sinuatum* (Çelak.) Rech.f.

Sarnıç field, meadows, 1400 m, 20.vi.2001, Deniz 1877. Ir.-Tur. El.

T. polium L.

Around entrance road, openings in macchie, 1100 m, 10.vii.2001, Deniz 1905.

Scutellaria rubicunda Hornem. subsp. *brevibracteata* (Stapf) J.R.Edm.

Between Çamkuyu and Tavşan fields, under forest, 1600 m, 11.vii.2001, Deniz 1936. End. E. Medit. El.

S. orientalis L. subsp. *pinnatifida* J.R.Edm.

Entrance road, under forest, 1200 m, 06.v.2001, Deniz 1323.

Phlomis pungens Willd. var. *hirta* Velen.

Kalaycı field, meadows, 1600 m, 19.vi.2001, Deniz 1836.

P. fruticosa L.

S side of Avlankuzu mountain, under forest, 1450 m, 21.v.2001, Deniz 1587. Medit. El.

P. grandiflora H.S.Thomps. var. *grandiflora*

Around entrance road, openings in macchie, 1100 m, 10.vii.2001, Deniz 1912. End.

P. armeniaca Willd.

Around entrance sign, meadows, 1100 m, 17.vi.2002, Deniz 2244. End. Ir.-Tur. El.

Lamium lycium Boiss.

S of Göltarla village, openings in macchie, 1350 m, 08.iv.2001, Deniz 1083. End. E. Medit. El.

L. cariense R.R.Mill

S of Göltarla village, openings in macchie, 1250 m, 08.iv.2001, Deniz 1114. E. Medit. El.

L. garganicum L. subsp. *reniforme* (Montbret & Aucher ex Benth.) R.R.Mill

Kalaycı field, meadows, 1600 m, 26.iv.2001, Deniz 1222.

L. cymbalariaefolium Boiss.

S of Akaba plateau, rocky places, 2350 m, 24.v.2001, Deniz 1711. End. E. Medit. El.

L. amplexicaule L.

Around Elmali-Finike road, under forest, 1100 m, 21.iii.2001, Deniz 1032. Avr.-Sib. El.

L. ehrenbergii Boiss. & Reut.

Sarnıç field, meadows, 1400 m, 08.v.2001, Deniz 1442. E. Medit. El.

Marrubium bourgaei Boiss. subsp. *bourgaei*

End of Kızlar Sivrisi road, steppe, 1750 m, 24.v.2001, Deniz 1712. End. E. Medit. El.

M. rotundifolium Boiss.

Akaba plateau, steppe, 1800 m, 13.v.2002, Deniz 2175. End. E. Medit. El.

M. globosum Montbret & Aucher ex Benth. subsp. *globosum*

W of Sarnıç field, meadows, 1400 m, 05.v.2001, Deniz 1282. End. Ir.-Tur. El.

M. globosum Montbret & Aucher ex Benth. subsp. *micranthum* (Boiss. & Heldr.) P.H.Davis

Çiğircik plateau, steppe, 1900 m, 24.vii.2001, Deniz 1978. End. E. Medit. El.

Sideritis montana L. subsp. *montana*

Around Çamkuyu, under forest, 1660 m, 19.vi.2001, Deniz 1813. Medit. El.

S. libanotica Labill. subsp. *linearis* (Benth.) Bornm.

Around Kızlar Sivrisi road, meadows, 1750 m, 28.ix.2001, Deniz 2051. End.

S. pisidica Boiss. & Heldr.

Kebap field, under forest, 1450 m, 21.v.2001, Deniz 1563. End. E. Medit. El.

Stachys cretica L. subsp. *anatolica* Rech.f.

W of Sarnıç field, meadows, 1400 m, 11.vii.2001, Deniz 1949. End. Ir.-Tur. El.

S. lavandulifolia Vahl subsp. *lavandulifolia*

W side of Kızlar Sivrisi, steppe, 2200 m, 10.vi.2001, Deniz 1776. Ir.-Tur. El.

S. annua (L.) L.

Gümüş Bucağı, C. libani Forest, Ca: 1100-1300 m. Calcareous, 3.v.1973. R. ÇETİK.

Nepeta italica L.

Sarnıç field, openings in macchie, 1550 m, 18.vi.2001, Deniz 1789.

N. nuda L. subsp. *albiflora* (Boiss.) Gams

E of Sarnıç field, stony slopes, 1400 m, 07.v.2001, Deniz 1417.

Origanum onites L.

Old road of Avlan lake, rocky places, 1100 m, 120.v.2002, Deniz 2211. E. Medit. El.

Acinos rotundifolius Pers.

Top of Avlankuzu mountain, under forest, 1880 m, 21.v.2001, Deniz 1574.

Thymus cilicicus Boiss. & Bal.

Around entrance sign, openings in macchie, 1100 m, 17.vi.2002, Deniz 2239. End. E. Medit. El.

T. spyleus Boiss. subsp. *spyleus* var. *spyleus*

Around watchman's house, openings in macchie, 1400 m, 15.iv.2002, Deniz 2111. End.

T. longicaulis C.Presl subsp. *chaubardii* (Boiss. & Heldr. ex Rchb.f.) Jalas var. *alternatus* Jalas

N of Çiğircik plateau, steppe, 1900 m, 28.ix.2001, Deniz 2052.

Salvia pisidica Boiss. & Heldr. ex Benth.

Around entrance road, openings in macchie, 1100 m, 10.vii.2001, Deniz 1903. End. Ir.-Tur. El.

S. potentillifolia Boiss. & Heldr. ex Benth.

Sarnıç field, meadows, 1400 m, 20.vi.2001, Deniz 1885. End. E. Medit. El.

S. chrysophylla Stapf

Gümüş Bucağı, openings in macchie, 1150 m, 23.v.2001, Deniz 1674. End. Ir.-Tur. El.

S. aethiopsis L.

Gümüş Bucağı, openings in macchie, 1150 m, 23.v.2001, Deniz 1675.

S. frigida Boiss.

S side of Avlankuzu mountain, under forest, 1700 m, 21.v.2001, Deniz 1570. Ir.-Tur. El.

S. candidissima Vahl subsp. *occidentalis* Hedge

N of Alişar hill, under forest, 1700 m, 22.v.2001, Deniz 1605. Ir.-Tur. El.

S. virgata Jacq.

Çamkuyu, meadows, 1660 m, 11.vii.2001, Deniz 1921. Ir.-Tur. El.

PLUMBAGINACEAE

Plumbago europaea L.

Around entrance sign, meadows, 1100 m, 10.vii.2001, Deniz 1893. Euro-Sib. El.

Acantholimon venustum Boiss. var. *venustum* Boiss.

Tavşan field, meadows, 1450 m, 11.vii.2001, Deniz 1940. Ir.-Tur. El.

A. acerosum (Willd.) Boiss. var. *acerosum*

Entrance road, openings in macchie, 1150 m, 20.vi.2001, Deniz 1891. Ir.-Tur. El.

A. puberulum Boiss. & Bal. var. *puberulum*

S of Sarnıç field, under forest, 1400 m, 21.v.2001, Deniz 1547. Ir.-Tur. El.

A. ulicinum (Willd. ex Schult.) Boiss. subsp. *ulicinum* var. *ulicinum*

Çiğircik plateau, steppe, 1900 m, 24.vii.2001, Deniz 1963. E. Medit. El.

PLANTAGINACEAE

Plantago lanceolata L.

W of Sarnıç field, meadows, 1400 m, 17.v.2001, Deniz 1445.

THYMELAEACEAE

Daphne oleoides Schreb. subsp. *oleoides*

Akaba plateau, steppe, 1750 m, 09.vi.2001, Deniz 1741.

ELAEAGNACEAE

Elaeagnus angustifolia L.

Göltarla village, gardens and fields, 1100 m, 23.v.2001, Deniz 1682.

SANTALACEAE

Thesium billardieri Boiss.

Akaba plateau, steppe, 1900 m, 24.v.2001, Deniz 1693. Ir.-Tur. El.

LORANTHACEAE

Viscum album L. subsp. *album*

Göltarla village, on Prunus trees, 1100 m, 08.iv.2001, Deniz 1082.

ARISTOLOCHIACEAE

Aristolochia auricularia Boiss.

S side of Avlankuzu mountain, under forest, 1600 m, 21.v.2001, Deniz 1586. End. E. Medit. El.

EUPHORBIACEAE

Euphorbia cardiophylla Boiss. & Heldr.

Between Alişar hill and Avlankuzu mountain, under forest, 1800 m, 09.vi.2001, Deniz 1753. End.

E. eriophora Boiss.

Around watchman's house, openings in macchie, 1350 m, 07.v.2001, Deniz 1363. Ir.-Tur. El.

E. rhabdotosperma Radcl.-Sm.

S of Göltarla village, openings in macchie, 1200 m, 08.iv.2001, Deniz 1125. Ir.-Tur. El.

E. szovitsii Fisch. & C.A.Mey. var. *kharpulentensis* Azn. ex M.S.Khan

W side of Kızlar Sivrisi, steppe, 2650 m, 24.v.2001, Deniz 1705. Ir.-Tur. El.

E. taurinensis All.

Around entrance road, openings in macchie, 1100 m, 15.iv.2002, Deniz 2102.

E. falcata L. subsp. *macrostegia* (Bornm.) O.Schwarz

N of Kalaycı field, under forest, 1600 m, 11.vii.2001, Deniz 1928. End. E. Medit. El.

E. herniariifolia Willd. var. *glaberrima* Hal.

S slope of Yerkaklık hill, openings in macchie, 1400 m, 26.iv.2001, Deniz 1187.

E. anacampseros Boiss. var. *anacampseros*

S of Göltařla village, openings in macchie, 1200 m, 08.iv.2001, Deniz 1123. End.

E. rigida M.Bieb.

Around entrance road, openings in macchie, 1100 m, 06.v.2001, Deniz 1332. Medit. El.

E. macroclada Boiss.

S of Akaba plateau, steppe, 1900 m, 24.v.2001, Deniz 1701. Ir.-Tur. El.

E. pestalozzae Boiss.

S of Sarnıç field, under forest, 1350 m, 21.v.2001, Deniz 1546. End. Ir.-Tur. El.

E. kotschyana Fenzl

Around entrance sign, openings in macchie, 1100 m, 17.vi.2002, Deniz 2263. E. Medit. El.

URTICACEAE

Urtica dioica L.

Göltařla village, gardens and fields, 1100 m, 23.v.2001, Deniz 1646. Euro-Sib. El.

MORACEAE

Morus alba L.

Göltařla village, gardens and fields, 1100 m, 23.v.2001, Deniz 1622.

Ficus carica L. subsp. *carica*

Gümüş Bucağı, roadsides, 1100 m, 09.x.2002, Deniz 2290.

ULMACEAE

Celtis glabrata Steven ex Planch.

Around entrance road, meadows, 1100 m, 30.iv.2001, Deniz 1241.

JUGLANDACEAE

Juglans regia L.

Around Çamkuyu, meadows, 1660 m, 08.v.2001, Deniz 1432.

FAGACEAE

Quercus coccifera L.

Around watchman's house, openings in macchie, 1350 m, 28.viii.2001, Deniz 2021. Medit. El.

SALICACEAE

Salix alba L.

Göltařla village, gardens and fields, 1100 m, 08.iv.2001, Deniz 1134. Euro-Sib. El.

Populus alba L.

Göltařla village, gardens and fields, 1100 m, 08.iv.2001, Deniz 1122. Euro-Sib. El.

ANGIOSPERMAE

LILIOPSIDA

ARACEAE

Arum conophalloides Kotschy ex Schott var. *conophalloides*

Çiğircik plateau, steppe, 1900 m, 20.v.2002, Deniz 2217.

LILIACEAE

Smilax excelsa L.

Around entrance road, openings in macchie, 1100 m, 27.viii.2001, Deniz 2002. Eux. El.

Asphodeline taurica (Pall.) Kunth

S of Akaba plateau, steppe, 1900 m, 24.v.2001, Deniz 1698. E. Medit. El.

Allium cepa L.

Göltařla village, gardens and fields, 1100 m, 17.vi.2002, Deniz 2277. (Culture).

A. flavum L. subsp. *tauricum* (Besser ex Rchb.) Stearn var. *tauricum*

Between Tavşan and Kalaycı fields, under forest, 1550 m, 19.vi.2001, Deniz 1846. Medit. El.

A. ampeloprasum L.

Sarnıç field, meadows, 1400 m, 20.vi.2001, Deniz 1887. Medit. El.

A. atrovioleaceum Boiss.

Gümüş Bucağı, openings in macchie, 1100 m, 23.v.2001, Deniz 1671.

A. scorodoprasum L. subsp. *rotundum* (L.) Stearn

Çamkuyu, meadows, 1660 m, 19.vi.2001, Deniz 1801. Medit. El.

A. stylosum O.Schwarz

Çiğircik plateau, roadsides, 1750 m, 24.vii.2001, Deniz 1961. End. E. Medit. El.

A. amethystinum Tausch

Çamkuyu, meadows, 1660 m, 11.vii.2001, Deniz 1922. Medit. El.

A. cyrilli Ten.

W of Sarnıç field, meadows, 1400 m, 07.v.2001, Deniz 1439. E. Medit. El.

Scilla bifolia L.

W side of Kızlar Sivrisi, steppe, 2200 m, 24.v.2001, Deniz 1697. Medit. El.

Ornithogalum sphaerocarpon A.Kern.

N of Alıç field, under forest, 1550 m, 19.vi.2001, Deniz 1827.

O. narbonense L.

Around entrance sign, openings in macchie, 1100 m, 07.v.2001, Deniz 1351. Medit. El.

O. montanum Cyr.

Sarnıç field, openings in macchie, 1400 m, 26.iv.2001, Deniz 1189. E. Medit. El.

O. lanceolatum Labill.

S of Göltařla village, openings in macchie, 1150 m, 08.iv.2001, Deniz 1135. E. Medit. El.

O. comosum L.

Sarnıç field, openings in macchie, 1450 m, 20.v.2001, Deniz 2191.

O. umbellatum L.

Around entrance sign, openings in macchie, 1100 m, 06.v.2001, Deniz 1351.

O. alpigenum Stapf

Çamkuyu, under forest, 1600 m, 19.vi.2001, Deniz 1823. End. E. Medit. El.

O. pamphylicum O.D.Düşen & Sümbül

Top of Avlankuzu mountain, under forest, 1880 m, 09.vi.2001, Deniz 1748. End. E. Medit. El.

Muscari muscarimi Medik.

Gümüş Bucağı, openings in macchie, 1100 m, 21.iii.2001, Deniz 1034. End. E. Medit. El.

M. comosum (L.) Mill.

Around watchman's house, openings in macchie, 1400 m, 07.v.2001, Deniz 1268. Medit. El.

**M. tenuiflorum* Tausch

Gümüş Bucağı, openings in macchie, 1100 m, 23.v.2001, Deniz 1678.

M. aucheri (Boiss.) Baker

N of Avlan lake, openings in macchie, 1150 m, 26.iv.2001, Deniz 1205. End.

M. armeniacum Leichtlin ex Baker

S of Göltarla village, openings in macchie, 1350 m, 08.iv.2001, Deniz 1085.

M. neglectum Guss.

S of entrance road, roadsides, 1150 m, 06.v.2001, Deniz 1354.

M. bourgaei Baker

W side of Kızlar Sivrisi, steppe, 2300 m, 24.v.2001, Deniz 1694. End. E. Medit. El.

**Bellevalia tauri* Feinbrun

Sarnıç field, meadows, 1400 m, 13.v.2002, Deniz 2199. End. E. Medit. El.

Fritillaria whittallii Baker

S of Kızlar Sivrisi road, roadsides, 1750 m, 07.v.2001, Deniz 1405. End. E. Medit. El.

F. pinardii Boiss.

S of entrance road, openings in macchie, 1150 m, 15.iv.2002, Deniz 2130. Ir.-Tur. El.

Tulipa sylvestris L.

Crossroad on the Kızlar Sivrisi road, meadows, 1750 m, 26.iv.2001, Deniz 1230.

T. armena Boiss. var. *lycica* (Baker) Marais.

S of crossroad on the Kızlar Sivrisi road, under forest, 1750 m, 26.iv.2001, Deniz 1231. End.

Gagea bithynica Pascher

Çiğircik plateau, under forest, 1850 m, 26.iv.2001, Deniz 1217. End. E. Medit. El.

**G. fistulosa* Ker Gawl.

Çiğircik plateau, under forest, 1850 m, 26.iv.2001, Deniz 1218.

G. foliosa (J. & C. Presl) Schult. & Schult.f.

S of crossroad on the Kızlar Sivrisi road, under forest, 1750 m, 13.v.2002, Deniz 2179.

G. peduncularis (J. & C. Presl) Pascher

Around entrance road, openings in macchie, 1150 m, 15.iv.2002, Deniz 2129. Medit. El.

G. granatellii (Parl.) Parl.

Around entrance road, openings in macchie, 1150 m, 21.iii.2001, Deniz 1014. Medit. El.

Colchicum boissieri Orph.

W of Sarnıç field, under forest, 1550 m, 28.ix.2001, Deniz 2040. E. Medit. El.

C. szovitsii Fisch. & C.A.Mey.

Opposite slopes of Akaba plateau, steppe, 1850 m, 07.v.2001, Deniz Ir.-Tur. El.

C. triphyllum Kunze

Sarnıç field, meadows, 1400 m, 21.ii.2001, Deniz 1010. Medit. El.

Merendera attica (Spruner) Boiss. & Spruner

Sarnıç field, meadows, 1400 m, 21.ii.2001, Deniz 1009. E. Medit. El.

IRIDACEAE

Crocus baytopiorum B.Mathew

Around entrance road, openings in macchie, 1150 m, 21.ii.2001, Deniz 1008. End. E. Medit. El.

C. biflorus Mill. subsp. *isauricus* (Siehe ex Bowles) B.Mathew

Opposite slopes of Çiğircik plateau, steppe, 1900 m, 13.v.2002, Deniz 2187. End. E. Medit. El.

C. pallasii Goldb. subsp. *pallasii*

Around Çamkuyu meteorology station, meadows, 1660 m, 13.ix.2000, Deniz 1001.

Crocus cancellatus Herb. subsp. *lycius* B.Mathew

Sarnıç field, meadows, 1400 m, 13.ix.2000, Deniz 1006. End. E. Medit. El.

Gladiolus anatolicus (Boiss.) Stapf

Kalaycı field, under forest, 1600 m, 09.vi.2001, Deniz 1731. End. E. Medit. El.

ORCHIDACEAE

Orchis simia Lam.

S of Göltarla village, under forest, 1250 m, 08.iv.2001, Deniz 1110. Medit. El.

O. anatolica Boiss.

S side of Avlankuzu mountain, under forest, 1100 m, 21.iii.2001, Deniz 1036. E. Medit. El.

O. palustris Jacq.

S of Çamkuyu, under forest, 1750 m, 08.v.2001, Deniz 1426.

JUNCACEAE

**Juncus acutus* L.

Around Gümüş Bucağı on Avlan lake, on water, 1050 m, 09.x.2002, Deniz 2289.

J. sphaerocarpus Ness

Around Elmalı-Finike road on Avlan lake, on water, 1050 m, 09.x.2002, Deniz 2285.

CYPERACEAE

Cyperus rotundus L.

Gümüş Bucağı side of Avlan lake, on water, 1050 m, 17.vi.2002, Deniz 2265 b.

POACEAE

Elymus lazicus (Boiss.) Melderis subsp. *divaricatus* (Boiss. & Bal.) Melderis

Kalaycı field, under forest, 1600 m, 20.v.2001, Deniz 1526. End. Ir.-Tur. El.

E. tauri (Boiss. & Bal.) Melderis subsp. *tauri*

Around Kalaycı field, under forest, 1660 m, 20.v.2001, Deniz 1532. Ir.-Tur. El.

E. repens (L.) Gould subsp. *repens*

Çamkuyu, meadows, 1660 m, 11.vii.2001, Deniz 1926.

E. hispidus (Opiz) Melderis subsp. *barbulatus* (Schur) Melderis

Around entrance road, openings in macchie, 1100 m, 17.vi.2002, Deniz 2268.

Aegilops markgrafii (Greuter) Hammer

Around watchman's house, openings in macchie, 1400 m, 21.v.2001, Deniz 1540. E. Medit. El.

A. umbellulata Zhuk. subsp. *umbellulata*

W of Sarnıç field, under forest, 1400 m, 20.vi.2001, Deniz 1879. Ir.-Tur. El.

Triticum monococcum L.

Around entrance road, fields, 1100 m, 15.iv.2002, Deniz 2270a. (Culture).

T. durum Desf.

Götarla village, fields, 1100 m, 15.iv.2002, Deniz 2271. (Culture).

T. aestivum L.

Around entrance road, fields, 1100 m, 15.iv.2002, Deniz 2270b. (Culture).

Secale anatolicum Boiss.

Tavşan field, under forest, 1660 m, 11.vii.2001, Deniz 1931.

S. cereale L. var. *cereale*

Götarla village, fields, 1100 m, 09.vi.2002, Deniz 1742. (Culture).

Hordeum murinum L. subsp. *glaucum* (Steud.) Tzvelev

Around entrance road, openings in macchie, 1150 m, 06.v.2001, Deniz 1345.

H. bulbosum L.

W of Sarnıç field, under forest, 1450 m, 20.vi.2001, Deniz 1873.

Bromus squarrosus L.

W side of Kalaycı field, under forest, 1660 m, 20.v.2001, Deniz 1527.

B. lanceolatus Roth

Around Kızlar Sivrisi road, meadows, 1750 m, 07.v.2001, Deniz 1376.

B. cappadocicus Boiss. & Bal. subsp. *cappadocicus*

Between Alişar hill and Avlankuzu mountain, under forest, 1800 m, 22.v.2001, Deniz 1614.

B. tomentellus Boiss.

Around entrance sign, openings in macchie, 1150 m, 10.vii. 2001, Deniz 1896.

Avena wiestii Steud.

Sarnıç field, meadows, 1400 m, 20.vi.2001, Deniz 1884.

Arrhenatherum palaestinum Boiss.

Çamkuyu, back of guest-house, under forest, 1660 m, 19.vi.2001, Deniz 1817. E. Medit. El.

Koeleria cristata (L.) Pers.

Çamkuyu, meadows, 1660 m, 11.vii.2001, Deniz 1916.

Milium vernale M.Bieb. subsp. *vernale*

Çiğircik plateau, under forest, 1800 m, 24.vii.2001, Deniz 1975. Medit. El.

Alopecurus arundinaceus Poir.

Around Kızlar Sivrisi road, meadows, 1750 m, 20.v.2001, Deniz 1504. Avr.-Sib. El.

A. vaginatus (Willd.) Boiss.

Kebap field, meadows, 1400 m, 21.v.2001, Deniz 1556.

A. lanatus Sm.

Around entrance road, openings in macchie, 1100 m, 20.v.2002, Deniz 2219. End. E. Medit. El.

Festuca pinifolia (Hack. ex Boiss.) Bornm. var. *pinifolia*

W of Burçaklı field, under forest, 1750 m, 23.v.2001, Deniz 1620. E. Medit. El.

F. valesiaca Schleich. ex Gaudin

Çamkuyu Cedar Forest, NE slope of Karakuyu, Ca: 1900 m. Calcareous, 3.vii.1974. R. ÇETİK.

F. elwendiana Markgr.-Dann.

Kalaycı field, under forest, 1600 m, 19.vi.2001, Deniz 1829.

Lolium temulentum L. var. *temulentum*

Crossroad on the Kızlar Sivrisi road, meadows, 1750 m, 08.v.2001, Deniz 1420.

***L. subulatum** Vis.

S of Sarnıç field, under forest, 1400 m, 20.v.2001, Deniz 1534. E. Medit. El.

Poa alpina L. subsp. *fallax* F.Herm.

S slope of Avlankuzu mountain, under forest, 1800 m, 21.v.2001, Deniz 1579.

P. bulbosa L.

Kebap field, meadows, 1400 m, 21.v.2001, Deniz 1560.

Dactylis glomerata L. subsp. *hispanica* (Roth) Nyman

Around entrance road, openings in macchie, 1150 m, 17.vi.2002, Deniz 2264.

Briza humilis M.Bieb.

Around entrance sign, meadows, 1100 m, 13.v.2002, Deniz 2169.

Melica ciliata L. subsp. *ciliata*

Around entrance road, openings in macchie, 1150 m, 06.v.2001, Deniz 1355.

Stipa holosericea Trin.

Sarnıç field, openings in macchie, 1550 m, 07.v.2001, Deniz 1431. Ir.-Tur. El.

***S. ehrenbergiana** Trin. & Rupr.

Çamkuyu, under forest, 1600 m, 20.v.2001, Deniz 1531. Ir.-Tur. El.

Arundo donax L.

S shore of Avlan lake, meadows, 1050 m, 15.iv.2002, Deniz 2273.

Cynodon dactylon (L.) Pers. var. *dactylon*

Around entrance sign, roadsides, 1100 m, 10.vii.2001, Deniz 1895.

Hyparrhenia hirta (L.) Stapf

Between Kalaycı and Tavşan fields, under forest, 1450 m, 11.vii.2001, Deniz 1938.

Zea mays L. subsp. *mays*

Götarla village, gardens and fields, 1100 m, 15.iv.2002, Deniz 2272. (Culture).