

Young Child Homicide and Accidental Death Rates in the United States, 1940-2005: Classification Issues in Mutually Exclusive Events

Jack E. Riggs¹, Gerald R. Hobbs²

¹Departments of Neurology, West Virginia University, Morgantown, USA

²Departments of Statistics, West Virginia University, Morgantown, USA

Email: jriggs@wvu.edu

Received December 9th, 2011; revised January 10th, 2012; accepted February 11th, 2012

Events that are mutually exclusive, collectively exhaustive, and have a constant sum must be negatively correlated. This study examined whether non-motor vehicle accidental deaths and homicides in young US children displayed a period of time when this rule governing mutually exclusive events was applicable. Homicide and non-motor vehicle accident mortality rates in boys and girls, aged 1 to 4 years old, in the United States from 1940 to 2005 were analyzed. Homicide mortality rates increased sharply in young boys when the accident mortality rate dropped to about 25/100,000; and in young girls, when the accident mortality dropped to about 18/100,000. This increase in child homicide mortality rates corresponded to a time period when the sum of homicide rates and non-motor vehicle accident rates in these children were relatively constant, making these rates of unnatural deaths mutually exclusive, collectively exhaustive, and having a nearly constant sum. Homicide rates in young US children were relatively stable both before and after this critical constant sum time period. These findings suggest that the increase in homicide rates in young US children appear to have reflected the necessary negative correlation between mutually exclusive, collectively exhaustive, and constant sum events, rather than an actual increase in societal violence directed against young children.

Keywords: Accidental Death Rates; Child; Classification; Homicide Rates; Mutually Exclusive Events

Introduction

Unnatural deaths may be classified into four categories; homicide, suicide, motor vehicle accident, and non-motor vehicle accident. These four categories are mutually exclusive. That is, the cause of each unnatural death can be attributed to only one of these four categories. Young children, aged 1 to 4 years old, do not commit suicide. Death due to a motor vehicle accident is generally obvious and for classification purposes, relatively judgment-independent. Accordingly, for the purpose of this study, young child motor vehicle accident deaths were excluded. In this study, non-motor vehicle accident deaths are referred to as accidental deaths. Therefore, this study examined the rates of two mutually exclusive events; young child homicides and young child accidental deaths. Each non-motor vehicle accident unnatural young child death must be classified as either a homicide or as an accident; it cannot be both and some mechanism of classifying that death must be exercised in each such young child death.

Events that are mutually exclusive, collectively exhaustive, and have a constant sum must be negatively correlated. Moreover, the reliability of nominal data (such as whether the unnatural death of a young child was an accident or a homicide) that is based upon judgment can be questioned (Cohen, 1960; Perreault & Leigh, 1989). Indeed, a prerequisite for measuring interobserver agreement on such judgments is that the nominal data categories must be mutually exclusive and exhaustive (Cohen, 1960). The underappreciated rules governing the classification of mutually exclusive events was studied in

the classification of unnatural infant deaths as either accidental deaths or homicides (Riggs & Hobbs, 2011). The consequences of classification in those mutually exclusive events have implications for society, the victims, and in the case of homicide, the accused perpetrators. In US infants, homicide rates increased sharply only during the time period when the sum of infant homicide rates and infant non-motor vehicle accidental death rates were relatively constant (Riggs & Hobbs, 2011). During that period, when these two events that are mutually exclusive, collectively exhaustive, and had a relatively constant sum; an increase in the rate of one of those two mutually exclusive events was associated with a corresponding decrease in the rate of the other event.

This purpose of this study was to examine whether non-motor vehicle accidental deaths and homicides in young US children (aged 1 to 4 years) displayed a period of time when this rule governing mutually exclusive, exhaustive, and constant sum events was also applicable.

Data

This study utilized publicly accessible data provided through the National Center for Health Statistics website (www.cdc.gov/nchs). Young child (defined as a child aged from 1 year old to less than 5 years old) homicide and accident mortality rates (per 100,000) for both boys and girls in the United States for the years 1940 through 2005 are shown in **Tables 1 and 2**.

Results

Young child homicide rates in the United States increased in young boys from about 0.5 - 1.0/100,000 prior to 1960 to about 2.5 - 3.0/100,000 after 1980 (Figure 1) and in young girls from about 0.5 - 1.0/100,000 prior to 1960 and to about 2.0 - 3.0/100,000 after 1980 (Figure 2). Homicide rates in both young boys and girls increased sharply between 1960 and 1980 (Figures 1 and 2).

To demonstrate the relative frequency of young child accident mortality and homicide rates, the annual ratio of young child accident mortality rate to young child homicide rate in both boys and girls was determined (Tables 1 and 2) and is displayed in Figures 3 and 4. This ratio declined over 95 percent in both young boys and girls between 1940 and 2005. Accident mortality rates in young US children declined by over 85 percent in boys and over 90 percent in girls between 1940 and 2005 (Tables 1 and 2).

Table 1. Homicide (H) and accident (A) non-motor vehicle mortality rates (per 100,000) among young boys (aged 1 year to less than 5 years old) and annual ratio of A/H in the United States from 1940 through 2005.

Year	H	A	A/H	Year	H	A	A/H
1940	0.6	42.1	70.2	1973	2.7	23.2	8.6
1941	0.7	41.0	58.6	1974	2.4	23.7	9.9
1942	0.6	42.7	71.2	1975	2.8	20.6	7.4
1943	0.5	48.8	97.6	1976	2.4	20.9	8.7
1944	0.5	45.1	90.2	1977	2.9	20.4	7.0
1945	0.7	41.2	58.9	1978	2.7	21.5	8.0
1946	0.7	38.8	55.4	1979	2.4	20.5	8.5
1947	0.7	36.2	51.7	1980	2.7	20.2	7.5
1948	0.6	33.7	56.2	1981	2.7	19.8	7.3
1949	0.8	30.7	38.4	1982	3.0	17.9	6.0
1950	0.5	29.5	59.0	1983	2.5	17.3	6.9
1951	0.6	28.0	46.7	1984	2.4	16.0	6.7
1952	0.8	28.3	35.4	1985	2.5	16.0	6.4
1953	0.7	27.2	38.9	1986	3.1	16.1	5.2
1954	0.6	25.5	42.5	1987	2.2	16.9	7.7
1955	0.5	25.0	50.0	1988	2.9	16.0	5.5
1956	0.7	24.9	35.6	1989	2.9	15.0	5.2
1957	0.5	23.6	47.2	1990	2.7	13.9	5.1
1958	0.7	24.3	34.7	1991	3.0	13.8	4.6
1959	0.9	24.3	27.0	1992	3.0	12.9	4.3
1960	0.7	24.3	34.7	1993	3.4	13.1	3.9
1961	1.0	23.9	23.9	1994	3.3	12.2	3.7
1962	0.9	24.0	26.7	1995	3.1	11.2	3.6
1963	1.2	24.7	20.6	1996	2.7	10.5	3.9
1964	1.3	24.6	18.9	1997	2.7	9.8	3.6
1965	1.2	26.4	22.0	1998	2.9	9.5	3.3
1966	1.2	26.7	22.3	1999	2.5	9.7	3.9
1967	1.1	26.2	23.8	2000	2.5	9.3	3.7
1968	1.5	24.6	16.4	2001	3.0	8.8	2.9
1969	1.8	23.9	13.3	2002	2.9	8.4	2.9
1970	1.9	23.9	12.6	2003	2.5	8.6	3.4
1971	2.3	24.3	10.6	2004	2.5	7.6	3.0
1972	2.0	25.2	12.6	2005	2.6	8.2	3.2

Table 2. Homicide (H) and accident (A) non-motor vehicle mortality rates (per 100,000) among young girls (aged 1 year to less than 5 years old) and annual ratio of A/H in the United States from 1940 through 2005.

Year	H	A	A/H	Year	H	A	A/H
1940	0.5	32.2	64.4	1973	2.3	15.6	6.8
1941	0.4	30.9	77.3	1974	2.0	14.2	7.1
1942	0.6	34.0	56.7	1975	2.0	14.6	7.3
1943	0.8	35.7	44.6	1976	2.5	13.3	5.3
1944	0.6	33.6	56.0	1977	2.4	13.2	5.5
1945	0.7	31.0	44.3	1978	2.3	14.1	6.1
1946	0.8	27.7	34.6	1979	2.6	12.7	4.9
1947	0.5	24.5	49.0	1980	2.2	12.9	5.9
1948	0.5	24.6	49.2	1981	2.4	11.8	4.9
1949	0.4	21.9	54.8	1982	2.5	11.3	4.5
1950	0.7	20.9	29.9	1983	2.0	11.4	5.7
1951	0.6	21.6	36.0	1984	2.4	9.8	4.1
1952	0.5	22.2	44.4	1985	2.4	9.9	4.1
1953	0.7	20.6	29.4	1986	2.3	10.9	4.7
1954	0.6	19.5	32.5	1987	2.4	9.9	4.1
1955	0.6	19.0	31.7	1988	2.3	9.5	4.1
1956	0.7	18.0	25.7	1989	2.5	9.0	3.6
1957	0.6	19.3	32.2	1990	2.4	8.1	3.4
1958	0.8	18.5	23.1	1991	2.6	9.3	3.6
1959	0.8	17.7	22.1	1992	2.5	7.7	3.1
1960	0.7	18.7	26.7	1993	2.5	8.3	3.3
1961	1.0	18.3	18.3	1994	2.7	7.5	2.8
1962	0.9	18.4	20.4	1995	2.6	7.2	2.8
1963	1.1	18.1	16.5	1996	2.7	6.5	2.4
1964	1.2	18.2	15.2	1997	2.2	6.2	2.8
1965	1.1	17.5	15.9	1998	2.4	5.9	2.5
1966	1.2	18.9	15.8	1999	2.4	6.5	2.7
1967	1.2	17.6	14.7	2000	2.1	5.9	2.8
1968	1.5	17.5	11.7	2001	2.4	5.3	2.2
1969	1.6	16.7	10.4	2002	2.5	4.8	1.9
1970	1.9	15.9	8.4	2003	2.3	5.2	2.3
1971	2.0	15.4	7.7	2004	2.2	5.0	2.3
1972	1.6	14.6	9.1	2005	2.0	4.6	2.3

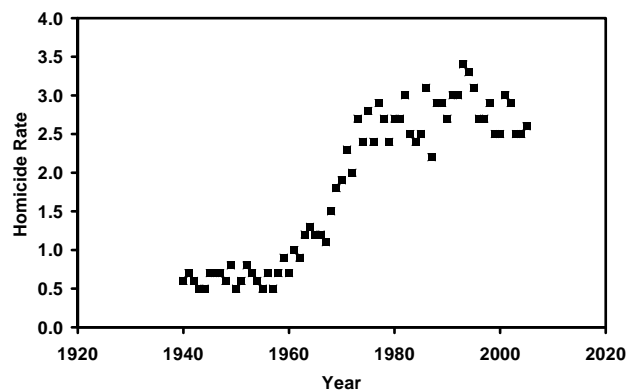


Figure 1. Homicide rate (per 100,000) in US boys, aged 1 - 4 Years, from 1940 through 2005.

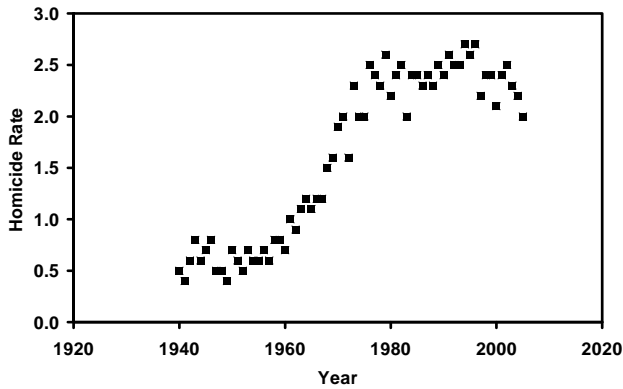


Figure 2. Homicide rate (per 100,000) in US girls, aged 1 - 4 years, from 1940 through 2005.

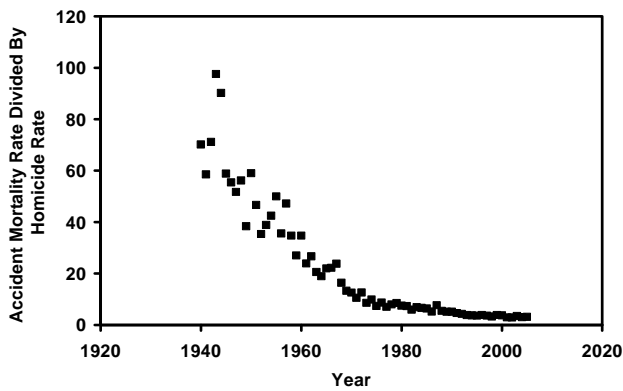


Figure 3. Ratio of accident mortality rate to homicide rate (per 100,000) in US boys, aged 1 - 4 years, from 1940 through 2005.

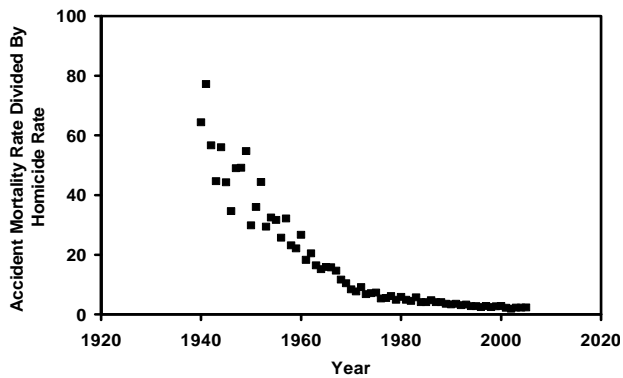


Figure 4. Ratio of accident mortality rate to homicide rate (per 100,000) in US girls, aged 1 - 4 years, from 1940 through 2005.

The sum of young child homicide rates and young child accident mortality rates in the US was relatively constant in young boys from approximately 1960 to 1980 (Figure 5) and in young girls from about 1955 to 1970 (Figure 6).

Plotting young child homicide rates versus young child accident mortality rates shows that young child homicide rates increased sharply as accident mortality rates decreased below certain levels (Figures 7 and 8). In young boys, when the accident mortality rate declined below 25/100,000, the homicide

rate sharply increased and then became relatively stable as the accident mortality rate continued to decrease below 20/100,000 (Figure 7). In young girls, when the accident mortality rate declined below 18/100,000, the homicide rate sharply increased and became relatively stable as the accident mortality rate continued to decrease below 12/100,000 (Figure 8). These periods of sharp increases in young child homicide rates correspond to the time periods when the sum of young child homicide rates and accident mortality rates among US boys and girls were relatively constant.

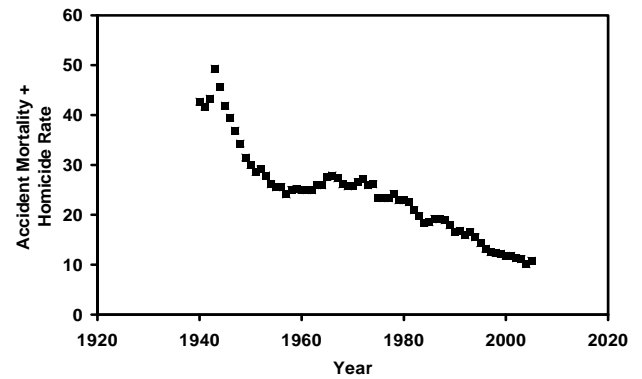


Figure 5. Sum of homicide and accident mortality rates (per 100,000) in US boys, aged 1 - 4 years, from 1940 through 2005.

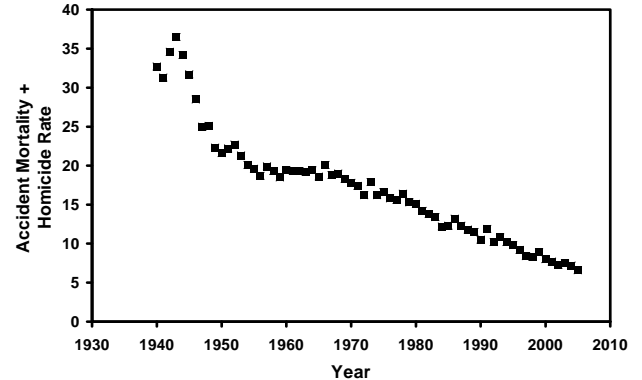


Figure 6. Sum of homicide and accident mortality rates (per 100,000) in US girls, aged 1 - 4 years, from 1940 through 2005.



Figure 7. Homicide versus accident mortality rate (per 100,000) in US boys, aged 1 - 4 years, from 1940 through 2005.

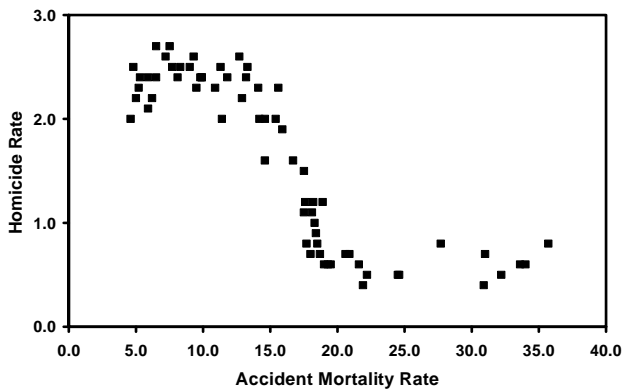


Figure 8. Homicide versus accident mortality rate (per 100,000) in US girls, aged 1 - 4 years, from 1940 through 2005.

Discussion

Young child homicide is frequently related to child abuse (Jenny and Isaac, 2006) or psychiatric dysfunction in a custodial adult (Friedman et al., 2005; Nielsen et al., 2009). Head injuries, drowning, and suffocation are the most frequent causes of death due to homicide in young children (Reece and Sege, 2000; Tung et al., 2006; Vanamo et al., 2001). Investigators have suggested that the actual magnitude of fatal child abuse has been underestimated (Crume et al., 2002; Herman-Giddens et al., 1999). Beginning in the 1960's to the 1980's, the problem of young child abuse and homicide became the focus of increased societal attention (Adelson, 1961; Christoffel, 1984; Kempe et al., 1962; Jason, 1983).

Similar to infants (Riggs & Hobbs, 2011), young child accident mortality rates in both boys and girls decreased over 85 percent in the United States between 1940 and 2005 (Tables 1 and 2, and Figures 3 and 4), reflecting improved societal injury prevention and trauma management. Also similar to infants (Riggs & Hobbs, 2011), young child homicide and accident mortality rates were slightly higher in boys than in girls (Tables 1 and 2).

When classifying two mutually exclusive events, their relative natural frequency may be important. For example, if event A and event B are potentially difficult to distinguish and event A is much more frequent, there may be a tendency to bias classification towards event A. However, if event A becomes less frequent and the sensitivity to recognizing event B is increasing, there may be a tendency to bias classification towards event B. This line of reasoning was suggested as contributing to the observed increase in infant homicide rates in the United States after 1980 (Riggs & Hobbs, 2011). In the case of young child homicide, homicide rates in the US increased predominantly during the period of time when the sum of young child homicide and accident mortality remained relatively constant (Figures 1, 2, 5-8). This same phenomenon was also observed in US infants. Infant homicide rates in the US increased during the period of time when the sum of infant homicide and accident mortality rates were relatively constant (Riggs & Hobbs, 2011). Moreover, if the ratio of accident mortality to homicide mortality in young children is consistently declining (as shown in Tables 1 and 2, and illustrated in Figures 3 and 4), during the periods when the sum of accident mortality and homicide rates are relatively constant and necessarily negatively correlated, then

homicide rates that must go up. If accident mortality rates were to go up during those periods, then the ratio of accident mortality rates to homicide rates would have also had to increase; and that did not occur.

These findings suggest that the logic rules governing two mutually exclusive, collectively exhaustive, and relatively constant sum events are consistent with and describe the observed increased reported young child homicide rates in US boys and girls. These logic rules may also explain why the influence of declining young child accident mortality and increased societal sensitivity to child abuse were not associated with continued increasing young child homicide rates despite the fact that both of these influences continued to occur after the critical time periods when the sum of the rates of young child homicide and accident mortality rates were relatively constant. Moreover, it seems rather unlikely that societal violence in the United States would have been increased against young children before 1980 (as observed in this study) and would have separately and distinctly increased against infants after 1980 (Riggs & Hobbs, 2011).

Epidemiological data is crucial in identifying and monitoring societal problems. Classification mechanisms are routinely used in the production of epidemiological data, and those classification mechanisms can have significant societal implications and consequences. This study suggests that the logic rules governing mutually exclusive, collectively exhaustive, and constant sum events described the classification process of distinguishing young child accidental deaths from homicides, similar to what was observed in US infants (Riggs & Hobbs, 2011). Moreover, these findings suggest that the increase in the homicide rates observed among young US children may have reflected the necessary negative correlation between mutually exclusive, collectively exhaustive, and constant sum events rather than an actual increase in societal violence directed against young children, similar to the pattern observed after 1980 among US infants. These observations illustrate the potential hazard of focusing attention on the measurement of one mutually exclusive event (the homicide rate) without also considering the influence of the other mutually exclusive event (the accident mortality rate). This changing classification propensity, as demonstrated in this study, appears to emerge spontaneously in the epidemiological classification process of events that are mutually exclusive, collectively exhaustive, and that have a relative constant sum. Moreover, this changing classification propensity appears to occur despite the best intentions and expertise of all those individuals who are independently involved in the classification process of each such unnatural death in young children.

Child abuse and homicide is a serious societal problem that cannot be tolerated. However, the inaccurate classification of a young child death as a homicide, rather than an accident, also has unacceptable and intolerable consequences.

This study only examined unnatural mortality classified and reported as either homicide or non-motor vehicle accident mortality. This study did not examine natural mortality due to illness. Consequently, no inferences can, or should, be derived from this study regarding misclassification between natural and unnatural deaths.

REFERENCES

- Adelson, L. (1961). Slaughter of the innocents, a study of forty-six homicides in which the victims were children. *New England Journal*

- of Medicine*, 264, 1345-1349. doi:10.1056/NEJM196106292642606
- Christoffel, K. K. (1984). Homicide in childhood: A public health problem in need of attention. *American Journal of Public Health*, 74, 68-70. doi:10.2105/AJPH.74.1.68
- Cohen, J. (1960). A coefficient of agreement for nominal scales. *Educational and Psychological Measurement*, 20, 37-46. doi:10.1177/001316446002000104
- Crume, T. L., DiGiuseppi, C., Byers, T., Sirotnak, A. P., & Garrett, C. J. (2002). Underascertainment of child maltreatment fatalities by death certificates, 1990-1998. *Pediatrics*, 110, e18. doi:10.1542/peds.110.2.e18
- Friedman, S. H., Horwitz, S. M., & Resnick, P. J. (2005). Child murder by mothers: A critical analysis of the current state of knowledge and a research agenda. *American Journal of Psychiatry*, 162, 1578-1587. doi:10.1176/appi.ajp.162.9.1578
- Herman-Giddens, M. C., Brown, G., Verbiest, S., Carlson, P. J., Hooten, E. G., Howell, E., & Butts, J. D. (1999). Underascertainment of child abuse mortality in the United States. *Journal of the American Medical Association*, 282, 463-467. doi:10.1001/jama.282.5.463
- Jason, J. (1983). Child Homicide spectrum. *American Journal of Diseases of Children*, 137, 578-581.
- Jenny, C., & Isaac, R. (2006). The relation between child death and child maltreatment. *Archives of Disease in Childhood*, 91, 265-269. doi:10.1136/adc.2004.066696
- Kempe, C. H., Silverman, F. N., Steele, B. F., Droegemueller, W., & Silver, H. K. (1962). The battered-child syndrome. *Journal of the American Medical Association*, 181, 17-24. doi:10.1001/jama.1962.03050270019004
- Nielssen, O. B., Large, M. M., Westmore, B. D., & Lackersteen, S. M. (2009). Child homicide in New South Wales from 1991 to 2005. *Medical Journal of Australia*, 190, 7-11.
- Perreault, W. D., & Leigh, L. E. (1989). Reliability of nominal data based on qualitative judgments. *Journal of Marketing Research*, 26, 135-148. doi:10.2307/3172601
- Reece, R. M., & Sege, R. (2000). Childhood head injuries, accidental or inflicted? *Archives of Pediatric and Adolescent Medicine*, 154, 11-15.
- Riggs, J. E., & Hobbs, G. R. (2011). Infant homicide and accidental death in the United States, 1940-2005: Ethics and epidemiological classification. *Journal of Medical Ethics*, 37, 445-448. doi:10.1136/jme.2010.041053
- Tung, G. A., Kumar, M., Richardson, R. C., Jenny, C., & Brown, W. D. (2006). Comparison of accidental and nonaccidental head injury in children on noncontrast computed tomography. *Pediatrics*, 118, 626-633. doi:10.1542/peds.2006-0130
- Vanamo, T., Kauppi, A., Karkola, K., Merikanto, J., & Rasanen, E. (2001). Intra-familial child homicide in Finland 1970-1994: incidence, causes of death and demographic characteristics. *Forensic Science International*, 117, 199-204. doi:10.1016/S0379-0738(00)00408-4