

TOWARDS AN EASIER ORIENTATION FOR SPHERICAL PHOTOGRAMMETRY

Gabriele Fangi

Università Politecnica delle Marche – Italy
g.fangi@univpm.it

Commission V, WG V/4

KEY WORDS: Panoramic Spherical Photogrammetry, Block Adjustment, Trinocular Vision

ABSTRACT:

For architectural metric documentation, Spherical Photogrammetry (SP) has demonstrated its validity and efficiency in many projects already. The speed of surveying is high, the accuracy and completeness of the plotting are satisfactory. However, there are still many problems to be solved. The weakest point is the orientation procedure, which is rather difficult to perform, in the sense that only very experienced people can run it, and few people only make use of it. The old orientation steps are 1) model formation (limited to binocular panoramas couples); 2) link of all the models in a block adjustment with independent model triangulation; 3) block bundle adjustment with 4 parameters/pano (3 coord.+1 orientation bearing); 4) block bundle adjustment with 6 parameters/pano, say the previous 4 + 2 correction angles around the horizontal axes. The panoramas must be spherical and quasi-horizontal. In order to make easier the orientation, enabling more people to use SP, an improved approach has been set up. It consists in the combination of any possible model formed either by three and two panoramas. The trinocular vision, say the combination of three different panoramas to form a unique model, has the advantage to be much more robust in comparison to binocular vision in the sense that the trinocular model is likely to be more error-free than any of the three composing binocular models. It contains less model deformation, the model coordinates are validated by the mutual comparison of the three intersecting binocular models. In addition, the number of possible trinocular models is normally much larger than the one of binocular models. The steps for a semi-automatic orientation of a block of panoramas proceed as follows:

- Form any possible trinocular models by combination of the panoramas;
- in case that no trinocular model has been formed, form any possible binocular model;
- run a block adjustment with the algorithm of independent model, to link together the models in a unique reference system;
- run a block bundle adjustment with collinearity equations with 4 unknown parameters per panorama;
- run a block bundle adjustment with collinearity equations with 6 unknown parameters per panorama.

The control requirements are limited to one fixed control point and two perpendicular constraints.

Given a project with n panoramas, the trinocular possible models are the combination of n , 3 by 3, say $(n*(n-1)*(n-2))/3!$. As an example, in a project with 10 panoramas the trinocular possible models are 120, while the possible binocular models are $(n*(n-1))/2 = 45$. Obviously not all the panoramas will be formed, because a minimum of four common tie points is required.

It is possible to select and filter out the best models by fixing a critical value on sigma naught for testing. The advantages are as follows:

- no need of approximate value for the unknown coordinates and parameters;
- easiness to find gross errors in the gradual block formation.

The epipolar geometry has been investigated, the expression of the curve described and assessed: it can be useful in the trinocular model formation. For any try of the model the operator, thus causing troubles to him, must approximately choose formation, up to now the starting value of the orientation bearing for any panorama. However, a new procedure, not requiring any approximate value of the orientation bearing, has been set-up and tested: the orientation bearing can vary stepwise by a given selected interval, until the model is successfully formed. The computation time increases significantly, but it is still negligible.

Up to now the control and tie points selection and observation is manual, making the orientation and the plotting to be slow and time consuming. Nevertheless, on the other end, the procedure is fully controlled and supervised by the operator, enabling the observation of the residuals and allowing the improvement of the orientation, and to perform some statistical quality analysis on the adjustment, which are not possible with automatic procedures based on Structure from Motion (SfM).

Another weak point of the SP is the speed of plotting. Commercial programs are now available, based on SfM algorithm, producing point clouds of good quality in an unknown scale and orientation. The correct scale and orientation can be therefore supplied by SP orientation with high accuracy. Examples are shown taken from two real projects.

1. INTRODUCTION

Panoramic Spherical Photogrammetry (PSP) makes use of spherical panoramas as information support. They are formed by overlapping images taken from the same point and stitched together on a sphere (Szelinsky and Shum, 1997) then mapped on a plane with the so-called latitude-longitude projection for the stitching for the type of cartographic projection (Snyder, 1993). The advantages of the spherical panorama consist in the Field Of View (FOV) that can reach $360^\circ \times 180^\circ$, and in the high image resolution, image being omnidirectional. From the panorama image point, the two direction angles φ and α

towards the object point can be derived as they were taken with a theodolite (Figure 2). The coordinates of an arbitrary object point can be obtained by intersection of corresponding straight lines connecting the image point with the center of two or more spheres (orientation). The PSP can be suitable for fast and accurate recording of Architectural Cultural Heritage (Pisa et al., 2010). Attempts have been done for the automatic detection of corresponding points in the panoramas (Barazzetti et al., 2010). To overcome the lack of stereoscopy and enable complex surfaces to be plotted, the photo-modeling has been used; say the back-projection of the oriented panoramic spheres

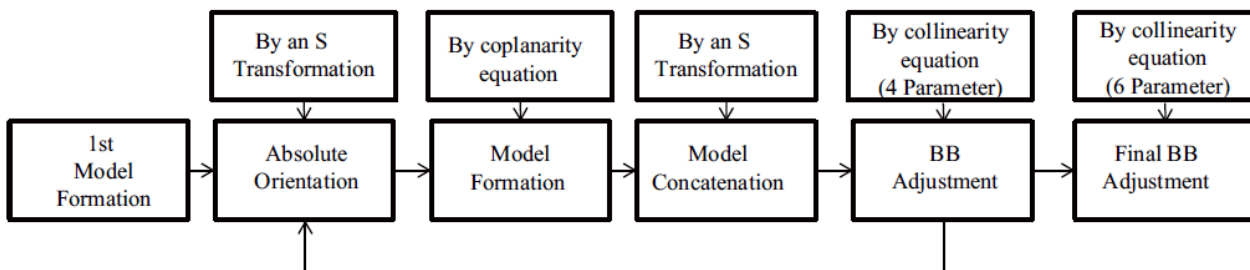


Figure 1: Flow-chart of the SP orientation procedure.

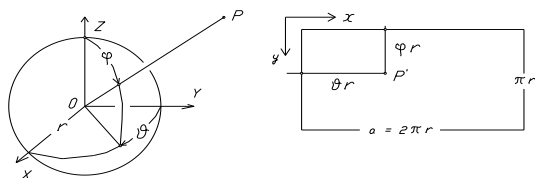


Figure 2: The sphere and its mapping.

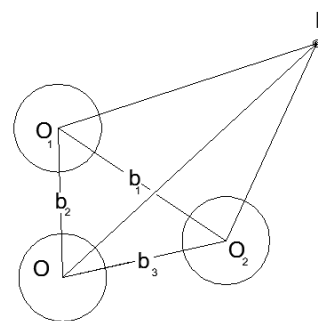


Figure 3: Triple intersection: the intersected planes.

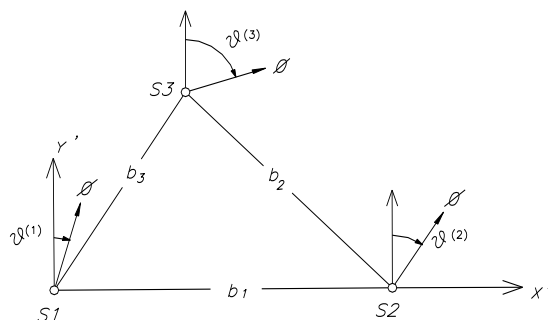


Figure 4: Selected reference system for trinocular model

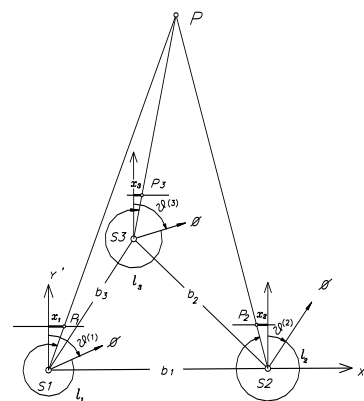


Figure 5: The three intersecting straight lines

over the rough model in a cad environment (d'Annibale, et al. 2009, Fangi, Piermattei, Wahbeh 2013).

The nature and algorithm of the epipolar curve has been investigated and shown (Fangi, Nardinocchi, 2013). So far, the integration with point clouds produced by SFM algorithms has been fruitfully used in (Fangi, Pierdicca, 2012). Here the trinocular model for spherical panoramas is introduced.

2. THE ORIENTATION PROCEDURE OF THE SPHERICAL PANORAMAS

The orientation procedure (Fig. 1) for spherical panoramas has been explained (Fangi, Nardinocchi, 2013). This procedure takes place as follows:

- Relative Orientation by coplanarity ending with the models formation
- Block Independent Model Triangulation
- Block Bundle Adjustment

One model can be composed by two panoramas, having in common three or more tie points (binocular model). All the

formed models by coplanarity, are linked together in a block adjustment with independent models (Independent Models Block Adjustment - IMBA). IMBA provides the approximated values for parameters and coordinates to be input in a Block Bundle Adjustment, this last using the collinearity equations. Block Bundle Adjustment can be performed in two steps: the first one with 4 parameters/per pano and the second final one with 6 parameters/per pano. The reason for that is the possibility to better find the gross errors. The coplanarity condition is:

$$g = x'^T M'^T b M'' x'' = 0 \quad (1)$$

where x' and x'' are the spherical coordinates of the image point P, M' and M'' the two rotation matrices, function of the angles $\varphi = y/R$ and $a = x/R + q_0$ being q_0 the zero bearing for the a panorama (figure 2), x and y the panorama image coordinates, X the spherical coordinates, b the base vector.

$$[X' \ Y' \ Z']M^T \begin{bmatrix} 0 & -b_z & b_y \\ b_z & 0 & -b_x \\ -b_y & b_x & 0 \end{bmatrix} M'' \begin{bmatrix} X'' \\ Y'' \\ Z'' \end{bmatrix} = 0 \quad (2)$$

For the absolute orientation of the block of the panoramas, a set of control points can be supplied, taken with traditional means (GPS, total station), as it is advisable for a professional project. As an alternative, the minimum requirements are one fixed point, one distance for the model size, together with three geometrical conditions in orthogonal directions. In (2) we can set $b_y=0$ and $b_x=1$ and the unknowns reduce to three q_0' , q_0'' , and b_z . Since the coplanarity condition (2) is not a linear equation, it has to be linearized. Therefore it is necessary to input approximate values for the unknowns, for b_z it can be set to zero but for the two orientation angles q_0' , q_0'' , the operator must give approximated values, which are troublesome. But we made an improvement: the new computation procedure can start with arbitrary values for q_0' , q_0'' . In case of failure of the iterative computation, the next attempt will start with initial values differing from the previous ones by a preset value. The approximated orientation bearing can vary stepwise by a given selected interval, until the model is successfully formed. The computation time increases significantly, but it is still negligible.

The novelty of the here described orientation procedure consists in the trinocular model, which is the model formed by three panoramas (trinocular model – see Fig. 3,4,5). Trinocular model have been already investigated by many authors and by the A. (Fangi, 1998). Trinocular vision is used for machine vision in industrial application (Heinrichs et al.,2007) and medical application (Sechidis, Malian et al., 2000). The advantages of the trinocular models are in terms of amount of needed tie points, in terms of number of formed models, but mainly in their strength: while the binocular models of spherical panoramas can be easily deformed due to the orientation imperfections and bad estimation of the orientation parameters (Fangi, 2010), the trinocular models have less deformation, because of any tie point not one coplanarity condition only, but even three coplanarity hold.

2.1 The Trinocular Model

In case of a triple intersection, say intersection of the arbitrary point P from three panoramas S1, S2 and S3, the interested planes are three (figures 3,4,5), three independent stereo-pairs, i.e. left-right, left-center, and center-right. Per any observed point we can then write three condition equations. The unknowns are in this case:

- the three coordinates of a station (3)
- the two components of one of the three bases (2)
- the three components of the remaining two bases
 $3 \times 2 = 6$

We can select the type of orientation such as to set equal to zero the coordinates of one of the three stations, S1, then equal to zero the Y coordinate of S2. For quasi-horizontal panoramas, as they are in PSP, we can set the rotation angles α_x , α_y around the horizontal axes x and y , equal to zero, thus reducing the amount of unknowns, and enabling a better detection of gross errors. They are estimated later on, α_x , α_y , starting from initial zero value, in the last stage of the orientation, the block bundle adjustment.

We define a positive versus in the triangle sides. We define the components (with sign) of the three bases:

$$\begin{cases} b_x^{(i)} = X'(i+1) - X'(i) \\ b_y^{(i)} = Y'(i+1) - Y'(i) \\ b_z^{(i)} = Z'(i+1) - Z'(i) \end{cases} \quad (3)$$

Because of the chosen system, $b_x^{(1)} = 1$ and $b_x^{(1)} = 0$.

To the coplanarity equations three conditions must be added, relative to the components in the three directions of the three bases.

$$\begin{cases} g_x = b_x^{(1)} + b_x^{(2)} + b_x^{(3)} = 0 \\ g_y = b_y^{(1)} + b_y^{(2)} + b_y^{(3)} = 0 \\ g_z = b_z^{(1)} + b_z^{(2)} + b_z^{(3)} = 0 \end{cases} \quad (4)$$

Not all the 10 parameters of orientation are indeed independent:

In fact, set

$$b_x^{(1)} = 1$$

in addition,

$$b_y^{(1)} = 0$$

from the (1) we have

$$b_x^{(3)} = 1 - b_x^{(2)} \quad b_y^{(3)} = -b_y^{(2)}$$

$$\text{and} \quad b_z^{(3)} = -(b_z^{(1)} + b_z^{(2)}) \quad (5)$$

Then the independent parameters are only the following seven:

$$g_1, g_2, g_3, b_z^{(1)}, b_x^{(2)}, b_y^{(2)}, b_z^{(2)},$$

being q_1 , q_2 , q_3 the three zero bearing for any panorama, say the direction clockwise of the origin of the image with respect to the reference system. We can write three linearized coplanarity conditions. For the approximated values of all parameters, for the bearings we behave like for binocular models. We can set to zero b_z components, $b_x^{(2)}=b_y^{(2)}=0.5$. In case of failure of the computation we change the sign of $b_y^{(2)}=-0.5$.

To solve for the 7 unknowns, at least three points must be observed, with a redundancy equal to 2 (in the case of intersection only from two stations the redundancy would be zero).

With n observed points (m = observ. dir., c =equat. ; u = unknowns ; r =redun.:

$$\text{from 2 stations:} \quad m=2n \quad u=2, \quad c=n, \quad r = n-2$$

$$m=2(n-1)$$

$$\text{from 3 stations:} \quad m=3n \quad u=7, \quad c=3n, \quad r = 3n-7$$

$$m=(3n-7)$$

From the graph in Figure 6, one can see as follows: when $n \geq 5$ for increasing the redundancy, it is convenient to set up three pano-stations better than to enlarge the number of the observed points from two stations.

A third panorama helps to solve problems and provides additional constraints on panorama link, dramatically reducing the chance of gross errors. For the same project, the number of trinocular models is larger than the one of binocular models. Than it is necessary to filter out the worse ones. The filter can be performed by testing the final sigma naught with a preset value. Another test is the interval of admissible dimension for the model. Given d_{max} the distance to an arbitrary point from one of the three base point and b_{max} the value of the largest of the three bases, the ratio d_{max}/b_{max} should be included in a prefixed interval to avoid ugly configuration.

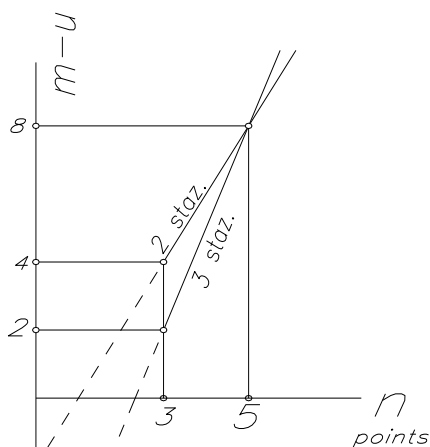


Figure 6: Relation between the number of the observed points and the number of observations.

The model formations can be a) fully automatic, b) select one panorama, c) select one couple, c) select a triplet.

- a) The procedure tries to form trinocular model with any possible combination of existing panoramas;
- b) The procedure tries to form trinocular models with any possible combination of two panoramas with the selected one;
- c) The procedure tries to form trinocular model with any possible combination of the two selected ones with the remaining panorama;
- d) The procedure tries to form the trinocular model formed by the selected triplet

From experience the most advisable choice of the four mentioned is the c). It permits to find gross errors as soon as they show up.

3. THE PSP IN COMBINATION WITH POINT CLOUD FROM SfM ALGORITHM

Another weak point of the PSP is the speed of plotting. Commercial programs are now available, based on SfM algorithms, producing point clouds of good quality in an unknown scale and orientation. The correct scale and orientation can be therefore supplied by PSP orientation with high accuracy. In the following, an example taken from a real project is shown. Santa Maria della Piazza façade, Ancona (Italy) has been surveyed with 9 spherical panoramas (figure 8). The possible triplets are $(9 \times 8 \times 7 / 6!) = 84$. Choosing the limit for sigma naught value $\sigma_0 = 0.001$ rad, none model was formed, for $\sigma_0 = 0.002$ one model only, for $s_0 = 0.003$ the formed triplets are 13, and finally for $\sigma_0 = 0.005$ the triplets successfully formed are 43. By increasing the value for sigma naught limit, increases the number of formed models, but in the same time increases also the possibility of undetected gross errors.

The orientation could provide nine control points well distributed on the surface. A point cloud project has been performed by means of a commercial software (Photoscan). The control points provided by PSP have been input in the Photoscan project, and the results are in Fig. 7. The average discrepancy is 1.08 cm while the maximum difference is 2.5 cm.

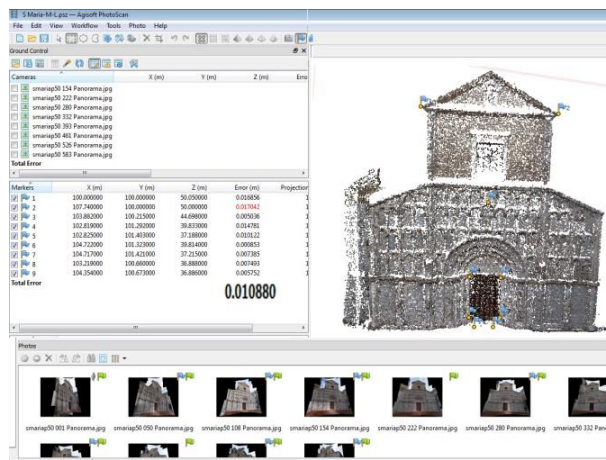


Figure 7: Errors of the control points produced by SP in a Photoscan Project – Santa Maria della Piazza façade, Ancona, Italy.

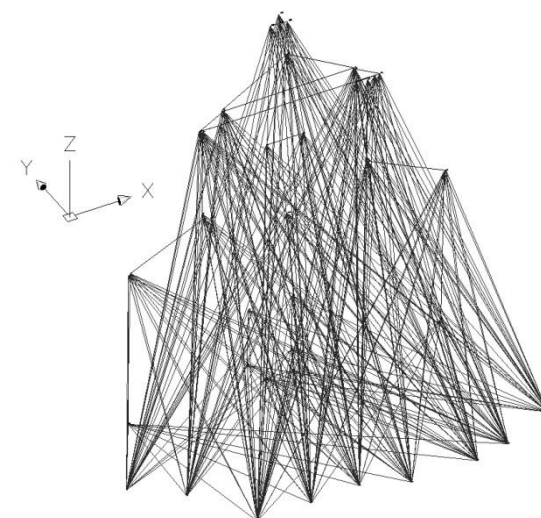


Figure 8: Santa Maria della Piazza façade.- The orientation network of the nine spherical panoramas.

4. CONCLUSIONS

The most difficult phase for PSP is the orientation phase. In order to make it easier some improvements have been set up in the procedure, the most significant one is the trinocular models. They are more robust in comparison with the binocular ones. The combination with commercial software for the point cloud production like Photoscan has been tested, giving good results. PSP provides the needed control points for the point clouds.

REFERENCES

- Barazzetti, L., Fangi, G., Remondino, F. and Scaioni, M., 2010. Automation in multi-image spherical photogrammetry for 3D architectural reconstructions. 11th International Symposium on Virtual Reality, Archaeology and Cultural Heritage (VAST), Paris, France. 75–81 (on CD-ROM).
- D'Annibale, E. and Fangi, G., 2009. Interactive modelling by projection of oriented spherical panorama. International Archives of Photogrammetry, Remote Sensing and Spatial Information Sciences, 38(5/W1). 6 pages (on CD-ROM).

- Fangi G., 1998. The Coplanarity Condition For The Orientation In Surveying - ISPRS Arch. WG VI/3 Meeting "International Cooperation and Technology Transfer" Perugia Febbraio 1998 pg151, 166
- Fangi G., 2010. Multiscale Multiresolution Spherical Photogrammetry With Long Focal Lenses For Architectural Surveys –ISPRS Mid-term Symposium NewCastle, June 2010 ISSN 1682-1777 ID 585
- Fangi G., Nardinocchi C., 2013. Photogrammetric processing of spherical Panoramas - The Photogrammetric Record 28(143): 293–311, DOI: 10.1111/phor.12031 pg. 293- 311 © 2013 The Remote Sensing and Photogrammetry Society and John Wiley & Sons Ltd – ID 146702 2-s2.0-84883817879
- Fangi, G. and Pierdicca, R., 2012. Notre Dame du Haut by spherical photogrammetry integrated by point cloud generated by multi view software. International Journal of Heritage in the Digital Era, 1(3): 461– 479.
- Fangi G., Wahbeh W., Piermattei L., 2013. Spherical Photogrammetry as Rescue Documentation for The Reconstruction of some UNESCO Sites in Syria - International Journal of Heritage in the Digital Era – Publisher Multi Science Publishing – ISSN 2047-4970 – Volume 2, N.3 /September 2013 Pages 335- 342 – DOI 10.1260/2047-4970.2.3.335 – ID 156110
- Heinrichs M., Rodehorst V., Hellwich O., 2007. Efficient Semi-Global Matching For Trinocular Stereo - Stilla U et al (Eds) PIA07. International Archives of Photogrammetry, Remote Sensing and Spatial Information Sciences, 36 (3/W49A)
- Luhmann, T. and Tecklenburg, W., 2004. 3D object reconstruction from multiple-station panorama imagery. International Archives of Photogrammetry, Remote Sensing and Spatial Information Sciences, 34(5/W16). 8 pages (on CD-ROM).
- Malian A., van den Heuvel F.A., Azizi A., 2005. A Robust Photogrammetric System For Wound Measurement -The Photogrammetric Record Volume 20, Issue 111, pages 241– 273, September 2005 DOI: 10.1111/j.1477-9730.2005.00319.x
- Pedersini F., Sarti A., Tubaro S., 1996. A Multi-view Trinocular System for automatic 3-D Object Modeling and Rendering – International Archives of Photogrammetry and Remote Sensing Vol. XXXI, part B5, Vienna 1996
- Pisa, C., Zeppa, F. and Fangi, G., 2010. Spherical photogrammetry for cultural heritage. Proceeding of the Second Workshop on Heritage and Digital Art Preservation, Florence, Italy. 3–6.
- Sechidis L., Tsioukas V., Patias P., 2000. An automatic Process for the Extraction of the 3d Model of the human Back Surface for Scoliosis Treatment - International Archives of Photogrammetry and Remote Sensing. Vol. XXXIII, Supplement B5. Amsterdam 2000.
- Schneider, D. and Maas, H. G., 2005. Combined bundle adjustment of panoramic and central perspective images. International Archives of Photogrammetry, Remote Sensing and Spatial Information Sciences, 36 (5/W8). 4 pages.
- Snyder, J. P., 1993. Flattening the Earth: Two Thousand Years of Map Projections. The University of Chicago Press, Chicago, Illinois, USA. 384 pages.
- Szeliski, R. and Shum, H., 1997. Creating full view panoramic image mosaics and environment maps. Proceedings of SIGGRAPH. 251–258.
- Torii, A., Imiya, A. and Ohnishi, N., 2000. Two- and three-view geometry for spherical cameras. 6th Workshop on Omnidirectional Vision, Camera Network and Non-classical Cameras, Beijing, China. 8 pages (on CD-ROM).
- Torii, A. and Imiya, A., 2007. Computation of epipolar geometry and trifocal tensor from spherical images. Computer Vision Winter Workshop, St Lambrecht, Austria. 8 pages (on CD-ROM).
- Volker S., Poyoc, 2000. Photogrammetric Measurements of Buildings and Architectural Models via Multi-View Stereovision eCAADe 1991 – PDF- Proceedings (conversion 2000)
- Agisoft Photoscan - <http://www.agisoft.com/>