



## Sex Determination of Cattle Meat by Polymerase Chain Reaction Amplification of the DEAD Box Protein (DDX3X/DDX3Y) Gene

P. Gokulakrishnan\*, R. R. Kumar, B. D. Sharma, S. K. Mendiratta and D. Sharma<sup>1</sup>

Division of Livestock Products Technology, Indian Veterinary Research Institute,  
Izatnagar, Bareilly (U.P.) 243 122, India

**ABSTRACT:** Determination of sex origin of cattle meat by fast and reliable molecular methods is an important measure to ensure correct allocation of export refunds particularly in European countries and also female cattle (cow) slaughter is legally banned in India because of religious beliefs. Based on the DEAD box protein gene located on the X and Y chromosomes, 2 pair of primers were designed and the system of PCR was optimized. Upon PCR amplification, male tissue showed 2 bands, while female tissue resulted in only one band. The accuracy and specificity of the primers was assessed using DNA template extracted from cattle meat of known sex. The protocol was subjected to a blind test and showed 100% concordance, proving its accuracy and reliability. (**Key Words:** Cattle Meat, Sex Determination, Meat Quality, DEAD Box Protein Gene)

### INTRODUCTION

Determination of sex origin of cattle meat has been always of public interest in country like India where slaughter of cow (female cattle) is banned because of religious beliefs and laws thereby. The economic aspect allied with such discriminatory slaughter policy also gets support as male beef is designated to be of higher quality than cow meat and therefore yield higher prices (Zeleny and Schimmel, 2002) particularly in European countries. To implement the regulations pertaining to such issues and to assure consumers of accurate labeling meat analysts need to have reliable, authentic and simple method for determining the sex of cattle meat.

To date, a range of different methodologies have been developed for determining the sex of meat, mainly based on detecting either hormone or DNA (Zeleny and Schimmel, 2002). In general terms, hormone-based methods include immunochemical determination using ELISA (Simontacchi et al., 1999), and chromatographic techniques with mass-spectrometric detection, such as high performance liquid chromatography-mass spectrometry/mass spectrometry

(HPLC-MS/MS) (Draisci et al., 2000) and gas chromatography-mass spectrometry (GC-MS) (Hartwig et al., 1997). Most of the methods proved to be highly specific and sensitive, but were not performed on a regular basis for meat sexing due to the technical limitations or the expensive equipments required.

Over the last few decades, DNA-based techniques, especially polymerase chain reaction (PCR)-based methods for meat sexing have received particular attention, and have proved to be reliable, sensitive, and fast (Tagliavini et al., 1993; Appa Rao et al., 1995). DNA regions that differ between male and female individuals are essential features in PCR sex determination. In general, these methodologies were developed mainly based on amelogenin gene (AMELX and AMELY) (Ennis and Gallagher, 1994; Chen et al., 1999; Fontanesi et al., 2008), zinc finger gene (ZFX and ZFY) (Aasen and Medrano, 1990; Kirkpatrick and Monson, 1993; Zinovieva et al., 1995; Lockley et al., 1997) and the sex determination region of the Y chromosomal gene (SRY) (Fu et al., 2007; Lu et al., 2007; Shi et al., 2008) Alternatively, the bovine-specific repetitive sequence BRY-1 (Matthews, 1990) and the single copy sequence BOV97 M (Miller and Koopman, 1990) are also used in the analysis for the sexing of cattle. More recently, based on real time PCR both SYBR Green (Ballin and Madsen, 2007) and TaqMan (Parati et al., 2006) for bovine sex determination have also been reported.

\* Corresponding Author: P. Gokulakrishnan. Tel: +91-0581-230 3682, Fax: +91-0581-2303284, E-mail: vetgokul@gmail.com

<sup>1</sup> Genome Mapping Laboratory, Central Avian Research Institute, Izatnagar, Bareilly (U.P.) 243 122, India.

Submitted Jan. 1, 2012; Accepted Feb. 21, 2012; Revised Mar. 17, 2012

The advantage with AMEL gene, zinc finger gene and DEAD box protein gene over Y chromosomal gene (SRY) is their presence on both sex chromosomes, because there is need of developing the suitable strategy for differentiating the negative amplification from no amplification due to PCR failure especially when Y chromosome specific primers are to be used. However the amplified product size and the difference between male and female in case of AMEL gene are larger whereas in case of zinc finger gene, differentiation of male and female sex requires RFLP technique. The DEAD box protein gene seems to be unique alternative because of easy amplification with a moderate difference in amplified product size between male and female. The purpose of the present work was to develop a protocol for sexing of cattle meat based on the DEAD box protein gene (DDX3X/DDX3Y) using PCR technique.

## MATERIALS AND METHODS

### Sample selection and DNA extraction

A total of 16 muscle tissue samples of cattle (8 male and 8 female) were collected from Referral polyclinic, Indian Veterinary Research Institute, Izatnagar. Further, a total of 12 meat samples (6 male and 6 female) were collected from local market of Kerala and West Bengal, India. The collected samples were transported to the laboratory under refrigeration, and were stored frozen at -20°C prior to analysis. Genomic DNA was extracted from the samples using the DNeasy® blood and tissue kit (QIAGEN, Germany) according to the manufacturer's instructions. Subsequently, the quality of genomic DNA was assessed by agarose gel electrophoresis using 0.8% agarose gel (AMRESCO, USA) stained with ethidium bromide. The purity and concentration of DNA was estimated

spectrophotometrically using Nanodrop® ND-1000 spectrophotometer (Thermo Scientific) at 260 and 280 nm. The DNA sample showing the OD<sub>260:280 nm</sub> value of 1.70-1.90 was considered as good quality.

### Design of PCR primers

As target for PCR primers the DEAD box protein gene was chosen in this study. Based on the information obtained from the alignment of NCBI Reference sequences of the DDX3X gene (GenBank Accession No. NW\_003104743.1) and DDX3Y gene (GenBank Accession No. NW\_003104786.1) sequences, two pairs of primers DDX3-1F (AGGAAGCCAGGAAAGTAA), DDX3-1R (CATCCA GTTCTAAGTCTC) and DDX3-2F (TGAGGAAGCCA GGAAAGTAAGTAT), DDX3-2R (GCACCACRTAWA CCACACAA) were designed with homology between X and Y chromosome. DDX3-1F and DDX3-1R primers were expected to yield a PCR fragment of 208-bp with the DDX3X gene as target sequence and 184-bp with DDX3Y gene, respectively. DDX3-2F and DDX3-2R primers were expected to yield a PCR fragment of 171-bp with the DDX3X gene as target sequence and 147-bp with DDX3Y gene, respectively (Figures 1 and 2). The PCR primers were designed using GeneTool® software and checked the hairpin structure and self ligation of these primers. The PCR primers were synthesized by Eurofins Genomics India Pvt Ltd, Bangalore.

### PCR amplification

Polymerase chain reaction (PCR) was performed in 25 µl of reaction mixture containing 50 ng of genomic DNA, 200 µm of each dNTP, 1.5 mM MgCl<sub>2</sub>, 5 pmoles of each DDX3-1F and DDX3-1R primers, 1 unit GoTaq® Flexi DNA Polymerase (Promega, Madison, WI, USA), 1× PCR

```

DDX3X 09977 GATCTATGAGGAAGCCAGGAAAGTAAGTATGC--CTTTCAGGTTATTGGC 10024
      |||
DDX3Y 07419 GATCTATGAGGAAGCCAGGAAAGTAAGTATGCGACTTGCTGATAATTGAC 07468

DDX3X 10025 CTTCTCATTGATCTGATGAAGTGTA----TTATGACCATGTAAAAATCT 10070
      .|||.|||.|||||      |||||      |||||
DDX3Y 07469 TTTTAAATAGATTCT-----AGTGTAATTTTATGACCATCTAA----- 07507

DDX3X 10071 TGGTCTTAAATTTAATAAATTTTCTTTGCTTATAGTTTTCATACCGATC 10120
      |||||      .|||||.|||||
DDX3Y 07508 -----TAAAT-----ATTGCTTGTAGTTTTCATACCGGTC 07538

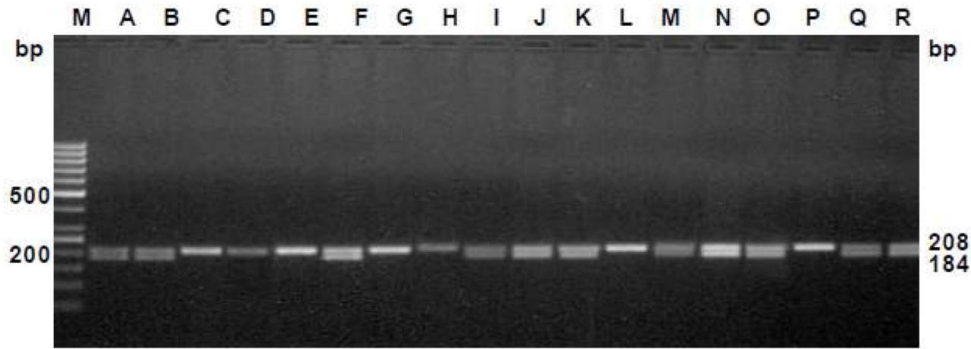
DDX3X 10121 TAGAGTTCGTCCTTGTGTGGTTTATGGTGGTGCTGATATTGGTCAGCAAA 10170
      |.|||||.|||||
DDX3Y 07539 TCGAGTTCCTTCTTGTGTGGTATACGGTGGTGCTGATATTGGTCAACAAA 07588

DDX3X 10171 TTCGAGACTTAGAACGTGGATGCCATTTATTAGTTGCGACTCCAGGACGT 10220
      |||||
DDX3Y 07589 TTCGAGACTTAGAACGTGGATGTCACTTGTGGTGGCCACTCCAGGACGC 07638

```

**Figure 1.** Alignment of the DDX3X and DDX3Y gene sequences (GenBank accession No. NW003104743.1 and NW003104786.1). The primers DDX3-1F and DDX3-1R are indicated by bold letters. Dashes indicate gaps in alignment.





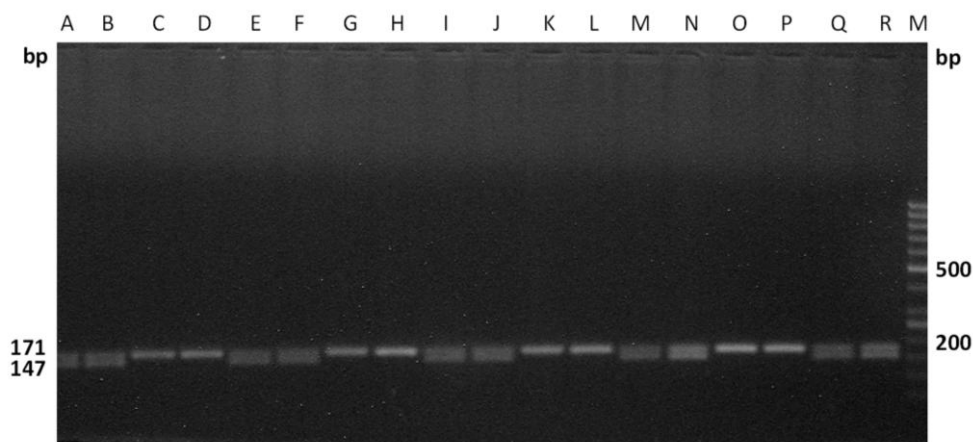
**Figure 5.** Laboratory validation of the assay in randomly coded samples using DDX3-1F and DDX3-1R primers. Samples are : male (Lanes A, B, F, I, J, K, M, N, O, Q and R) and female (Lanes C, D, E, G, H, L and P). M-Marker of molecular weight, 50-bp ladder (O'Gene Ruler, Fermentas).

During the last few decades, based on PCR technique, several different methodologies were developed for determining the sex of domestic animal meat (Tagliavini et al., 1993; Appa Rao et al., 1995; Ballin and Madsen, 2007), most of which were thought to be reliable, sensitive, and fast (Zeleny et al., 2002; Zeleny and Schimmel, 2002). Male beef is designated to be of higher quality than cow meat because cow meat is usually derived from females, usually at the end of their useful reproductive life, or at the end of their time as milk producers (Tagliavini et al., 1993). Sexing of cattle meat is of potential value in the quality control, as well as, in protecting the interests of consumers. In this work, we have proposed a reliable, fast, and straight forward method for the sexing of cattle meat through PCR amplification of DEAD box protein gene using only one primer set with amplified product size of less than 200-bp and moderate difference of 24-bp between male and female.

DEAD box polypeptide 3 (DDX3) is a subfamily of the DEAD (for the sequence Asp-Glu-Ala-Asp) box RNA helicases, a family of proteins characterized by the conserved motif (Abdelhaleem, 2005; Rosner and

Rinkevich, 2007). The DEAD box proteins are ATP-dependent, and involved in unwinding double-stranded RNA structures and remodeling RNA protein interactions. Thus, they are crucial for RNA metabolism, including transcription, splicing, RNA export, ribosome biogenesis, RNA degradation and translation initiation (Benz et al., 1999). In cattle, this gene is located on the X-chromosome (DDX3X) and the Y-chromosome (DDX3Y) (Liu et al., 2009). Due to length polymorphism between DDX3X and DDX3Y this gene is used as a target for sex determination in this study. Due to an insertion or deletion in the region amplified in the X-specific (DDX3X) or Y-specific (DDX3Y) gene, the amplified fragments are of different sizes.

The efficiency of these primers were tested on the male as well as female cattle meat samples, collected from two different states of India (i.e.) Kerala, West Bengal, which are approximately 2,000 km apart. The primers were effectively differentiated the sexes of the randomly coded samples for each set of primers (Figures 5 and 6), which suggests the wider applicability of these primers in sex



**Figure 6.** Laboratory validation of the assay in randomly coded samples using DDX3-2F and DDX3-2R primers. Samples are : male (Lanes A, B, E, F, I, J, M, N, Q and R) and female (Lanes C, D, G, H, K, L, O and P). M-Marker of molecular weight, 50-bp ladder (O'Gene Ruler, Fermentas).

determination of cattle meat.

## CONCLUSIONS

In conclusion our findings show that the PCR assay based on the DEAD box protein gene is reliable for sex identification in cattle meat. Due to relatively short size (<200-bp) of the PCR products, this method can be successfully applied to sex determination of cattle meat samples with highly degraded DNA in a relatively shorter period of time. Also, the advantage of this assay is that neither additional control amplicons with a second locus-specific autosomal primer pair nor restriction endonuclease steps are necessary for sex determination and control of the PCR reaction. To our knowledge, this is the first report to demonstrate the applicability of DEAD box protein gene for sexing cattle meat.

## ACKNOWLEDGEMENTS

The authors gratefully acknowledge Indian Veterinary Research Institute (IVRI) and Central Avian Research Institute (CARI), Izatnagar, India for providing necessary facilities to accomplish this research.

## REFERENCES

- Aasen, E. and J. F. Medrano. 1990. Amplification of the ZFY and ZFX genes for sex identification in humans, cattle, sheep and goats. *Nat. Biotechnol.* 8:1279-1281.
- Abdelhaleem, M. 2005. RNA helicases: Regulators of differentiation. *Clin. Biochem.* 38:499-503.
- Appa Rao, K. B. C., V. Kesava Rao, B. N. Kowale and S. M. Totey. 1995. Sex specific identification of raw meat from cattle, buffalo, sheep and goat. *Meat Sci.* 39:123-126.
- Ballin, N. Z. and K. G. Madsen. 2007. Sex determination in beef by melting curve analysis of PCR amplicons from the amelogenin locus. *Meat Sci.* 77:384-388.
- Benz, J., H. Trachsel and U. Baumann. 1999. Crystal structure of the ATPase domain of translation initiation factor 4a from *Saccharomyces cerevisiae* - the prototype of the DEAD box protein family. *Structure* 7:671-679.
- Chen, C. M., C. L. Hu, C. H. Wang, C. M. Hung, H. K. Wu, K. B. Choo and W. T. Cheng. 1999. Gender determination in single bovine blastomeres by polymerase chain reaction amplification of sex specific polymorphic fragments in the amelogenin gene. *Mol. Reprod. Dev.* 54:209-214.
- Draischi, R., L. Palleschi, E. Ferretti, L. Lucentini and P. Cammarata. 2000. Quantitation of anabolic hormones and their metabolites in serum and urine by liquid chromatography-tandem mass spectrometry. *J. Chromatogr. A.* 870:511-522.
- Ennis, S. and T. F. Gallagher. 1994. A PCR based sex determination assay in cattle based on the bovine amelogenin locus. *Anim. Genet.* 25:425-427.
- Fontanesi, L., E. Scotti and V. Russo. 2008. Differences of the porcine amelogenin X and Y chromosome genes (AMELX and AMELY) and their application for sex determination in pigs. *Mol. Reprod. Dev.* 75:1662-1668.
- Fu, Q., M. Zhang, W. S. Qin, Y. Q. Lu, H. Y. Zheng, B. Meng, S. S. Lu and K. H. Lu. 2007. Cloning the swamp buffalo SRY gene for embryo sexing with multiplex nested PCR. *Theriogenology* 68:1211-1218.
- Hartwig, M., S. Hartmann and H. Steinhart. 1997. Physiological quantities of naturally occurring steroid hormones (androgens and progestogens), precursors and metabolites in beef of differing sexual origin. *Eur. Food Res. Technol.* 205:5-10.
- Kirkpatrick, B. W. and R. L. Monson. 1993. Sensitive sex determination assay applicable to bovine embryos derived from IVM and IVF. *J. Reprod. Fertil.* 98:335-340.
- Liu, W. S., A. Wang, Y. Yang, T. C. Chang, E. Landrito and H. Yasue. 2009. Molecular characterization of the DDX3Y gene and its homologs in cattle. *Cytogenet. Genome Res.* 126:318-328.
- Lockley, A. K., J. S. Bruce, S. J. Franklin and R. G. Bardsley. 1997. Simultaneous detection of a sex specific sequence and the Ryr1 point mutation in porcine genomic DNA. *Meat Sci.* 45:485-490.
- Lu, W., N. Rawlings, J. Zhao and H. Wang. 2007. Amplification and application of the HMG box of bovine SRY gene for sex determination. *Anim. Reprod. Sci.* 100:186-191.
- Matthews, M. E. and K. C. Reed. 1992. Sequences from a family of bovine Y chromosomal repeats. *Genomics* 13:1267-1273.
- Miller, J. R. and M. Koopman. 1990. Isolation and characterization of two male specific DNA fragments from the bovine gene. *Anim. Genet.* 21:77-82.
- Parati, K., G. Bongioni, R. Aleandri and A. Galli. 2006. Sex ratio determination in bovine semen: A new approach by quantitative real time PCR. *Theriogenology* 66:2202-2209.
- Rosner, A. and B. Rinkevich. 2007. The DDX3 subfamily of the DEAD box helicases: divergent roles as unveiled by studying different organisms and *in vitro* assays. *Curr. Med. Chem.* 14:2517-2525.
- Shi, L., W. Yue, Y. Ren, F. Lei and J. Zhao. 2008. Sex determination in goat by amplification of the HMG box using duplex PCR. *Anim. Reprod. Sci.* 105:398-403.
- Simontacchi, C., L. Marinelli, G. Gabai, G. Bono and R. Angeletti. 1999. Accuracy in naturally occurring anabolic steroid assays in cattle and first approach to quality control in Italy. *Analyst* 124:307-312.
- Tagliavini, J., A. Bolchi, P. G. Bracchi and S. Ottonello. 1993. Sex determination on samples of bovine meat by polymerase chain reaction. *J. Food Sci.* 58:237-238.
- Zeleny, R. and H. Schimmel. 2002. Sexing of beef- A survey of possible methods. *Meat Sci.* 60:69-75.
- Zeleny, R., A. Bernreuther, H. Schimmel and J. Pauwels. 2002. Evaluation of PCR based beef sexing methods. *J. Agric. Food Chem.* 50:4169-4175.
- Zinovieva, N., G. Palma, M. Muller and G. Brem. 1995. A rapid sex determination test for bovine blastomeres using allele-specific PCR primers and capillary PCR. *Theriogenology* 43:365.